

PPSA

BRINGING THE INDUSTRY HOME SAFE

&



riskband
ARIES

PROACTIVE PEACE OF MIND



RiskBand Proprietary: Confidential and proprietary materials for authorized Whereable Technologies LLC, its subsidiaries and affiliates, personnel and authorized recipients only. Use, disclosure or distribution of this material is not permitted to any unauthorized persons or third parties except by written permission.

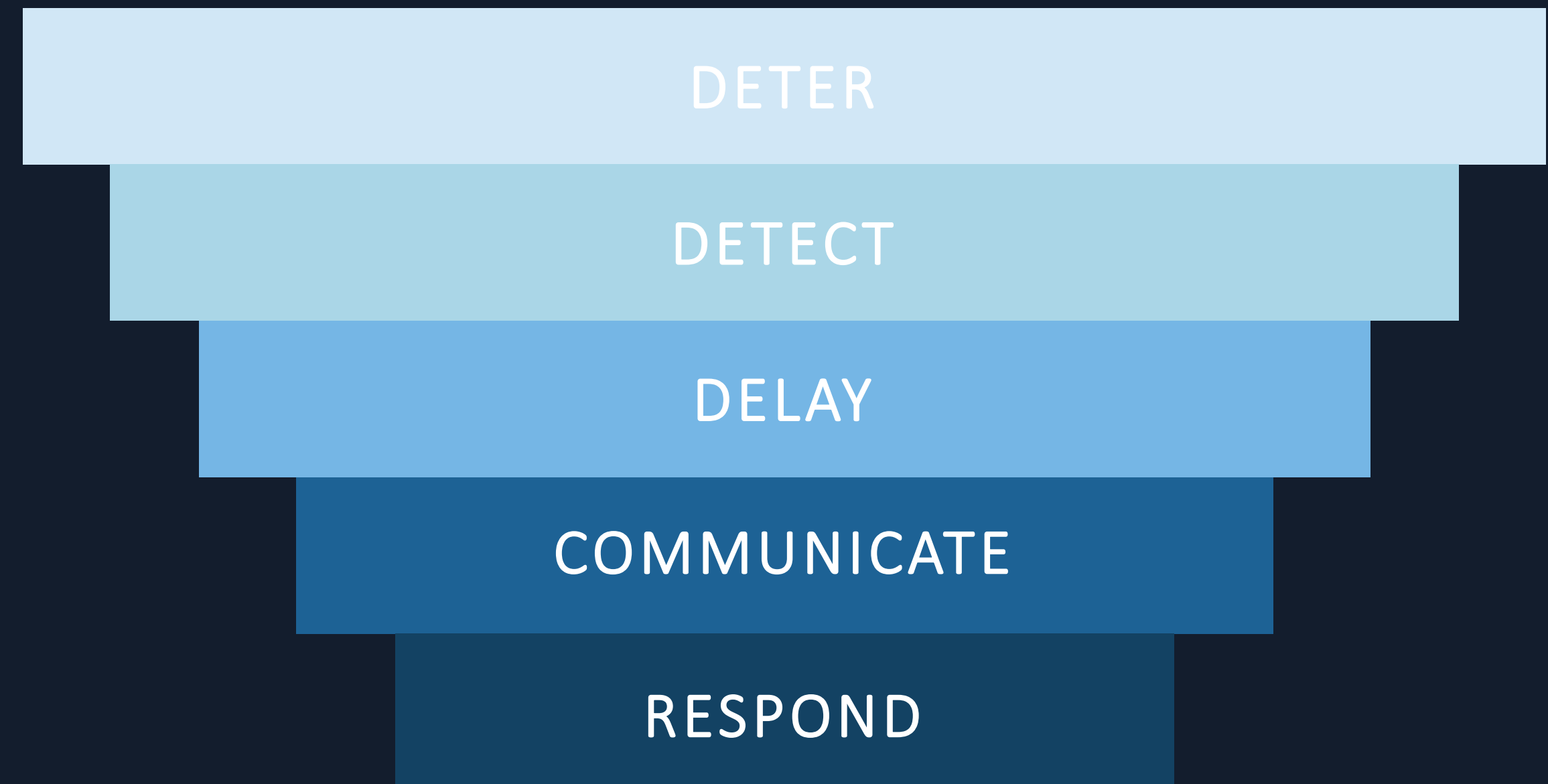


LAYERED SAFETY

Comprehensive safety requires layers.

*There is **no single solution** to safety your environment and workforce.*

The best approach is a system of layered applications, both proactive and reactive, to provide for a positive safety structure



INDUSTRIAL APPLICATION

- *Equip workers in the field with push button alerting.*
- *Empower workers to discreetly request assistance during an emergency situation.*
- *In the event of an incident, enable complete capture of critical voice, images and GPS location data for evidentiary purposes.*



INTRODUCTION

The RiskBand Platform

*RiskBand is a simple, but sophisticated multi-dimensional wearable technology providing **two-way voice, data, photos (8 per second) and geo location**, in near real-time and with a single push of a button, to a world-class **FEMA-certified** trained team or on-site security that can deploy the appropriate emergency response in over **150 countries and in 200+ languages** and dialects around the world.*



RAPID RESPONSE TIME



DESIGNATED RESPONSE
CONFIGURATION



DATA CAPTURE & STORAGE

DEVICE OVERVIEW

RiskBand is first and foremost an emergency response and communication device.

- *Utilizes Penta-Band GSM / 2G/3G/4G for global cellular communications*
- *GNSS / GPS and cellular assisted A-GPS for global location and tracking*
- *LCD for information display of Emergency Action Messaging*
- *Single push button for emergency alerting*

KEY DIFFERENTIATOR

RiskBand operates completely untethered, unlike other devices which must be connected to a smart phone at all times.



HARDWARE

Device Overview

- *Untethered GSM / 3G*
- *International*
- *On-Board Camera*
- *Advanced Geo-Location*
- *IP67*



- Microphone
- Camera
- Date/Time Indicator
- Username
- Organization Registration Code
- Battery Meter
- Cellular Service Meter
- Select Button
- Scroll Buttons
- Emergency Activation Button
- Speaker
- Charging Port

HARDWARE cont'd

Easily worn in multiple configurations

- *Discrete*
- *Carabiner case*
- *Lanyard worn*
- *Clip case*
- *Exclusive partnership with*



SPECK CASES UNDERGO EXTENSIVE THIRD PARTY & INTERNAL TESTING

Les étuis Speck sont testés abondamment par des tiers et à l'interne

- ✓ **Extreme drops**
Chutes extrêmes
- ✓ **Cracks and abrasions**
Fissures et abrasions
- ✓ **Button responsiveness**
Sensibilité des boutons

- ✓ **Antenna interference**
Interférence de l'antenne
- ✓ **Extreme temperatures**
Températures extrêmes
- ✓ **UV-yellowing resistance**
Résistance au jaunissement des UV

2-WAY VOICE COMMUNICATION

Upon alarm, the embedded microphone and speaker are activated and a 2-way voice connection is formed with GEOS responders or your company's on-site dedicated security command center.

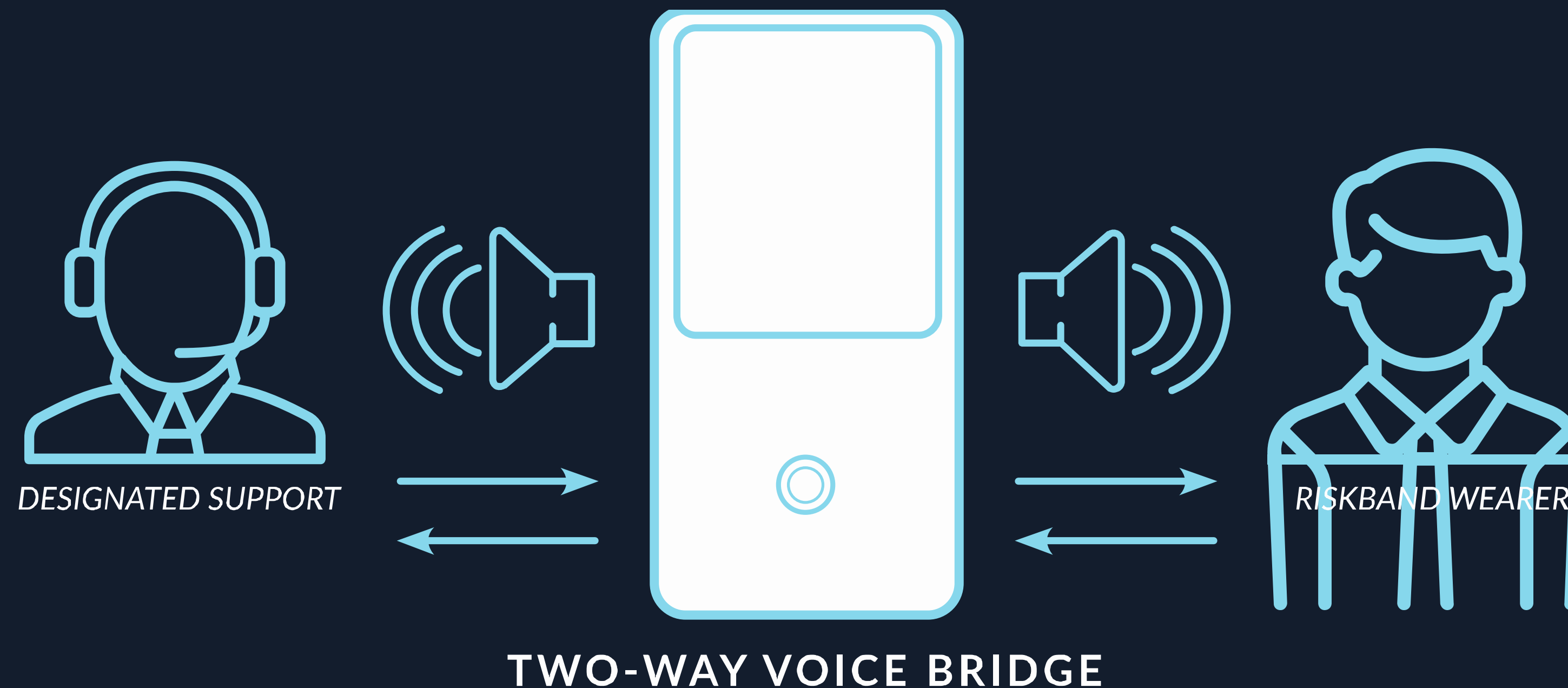
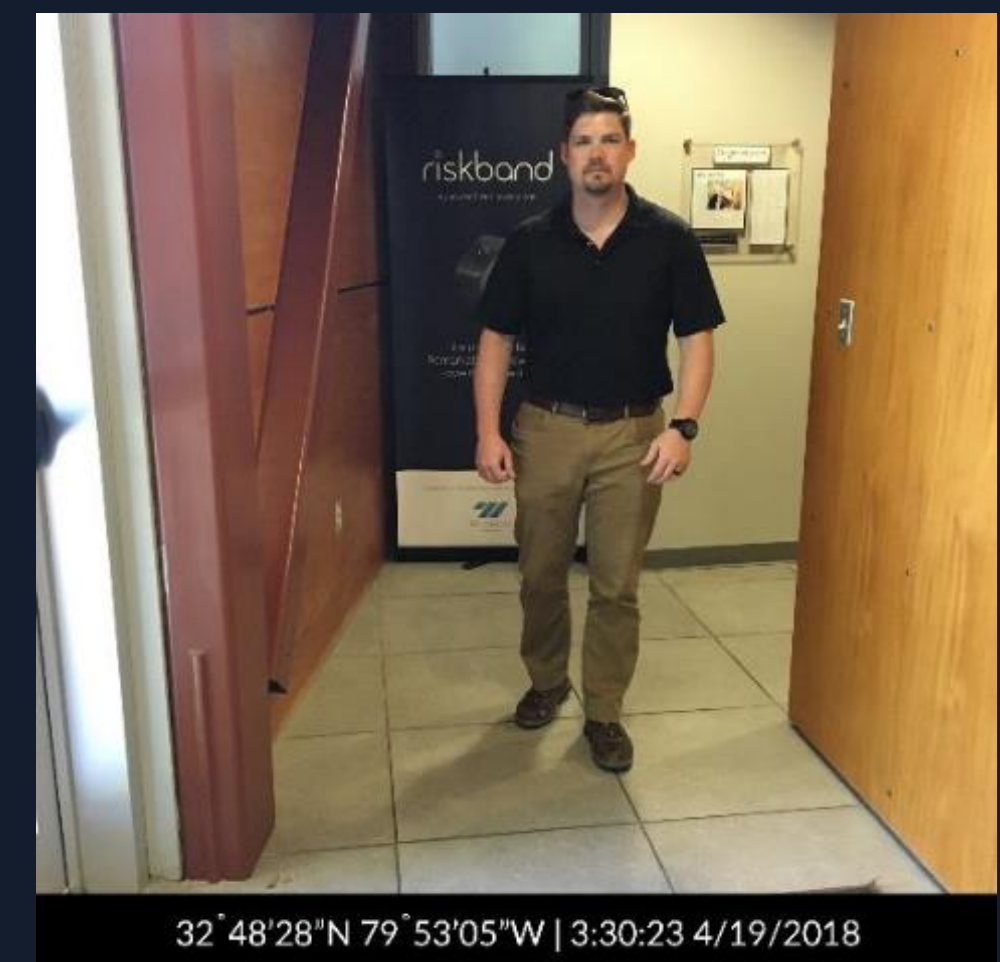
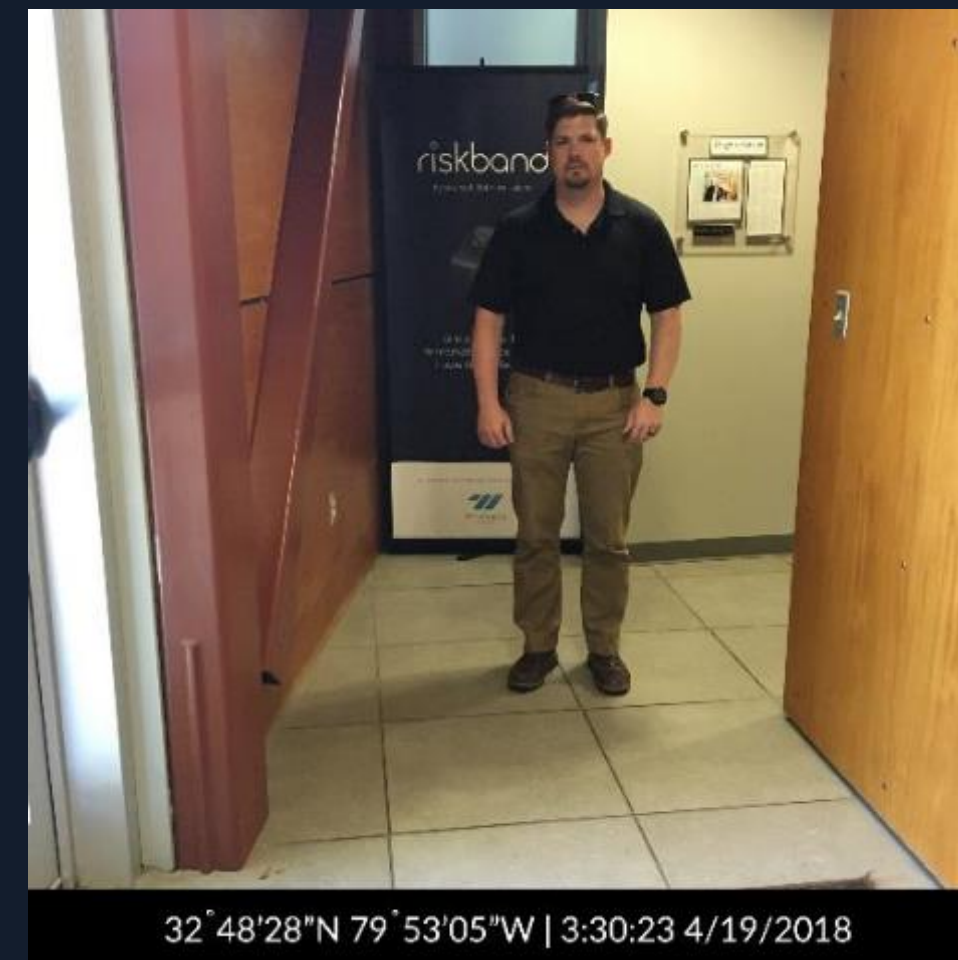


IMAGE CAPTURE

Image Capture

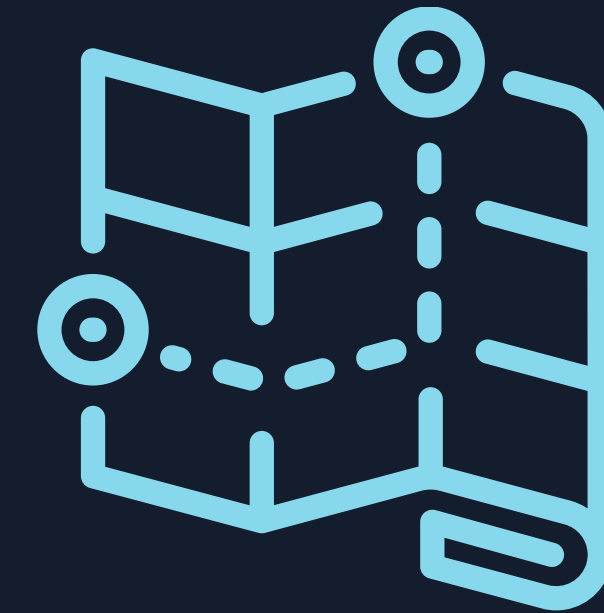
- *8 Images per second*
- *Date / Time / Location Stamped*
- *Stored and Hashed*
- *Support for Legal Investigation*



GPS TRACKING

Combining both satellite and cellular positioning services, RiskBand provides for redundancy and assured location in an emergency situation.

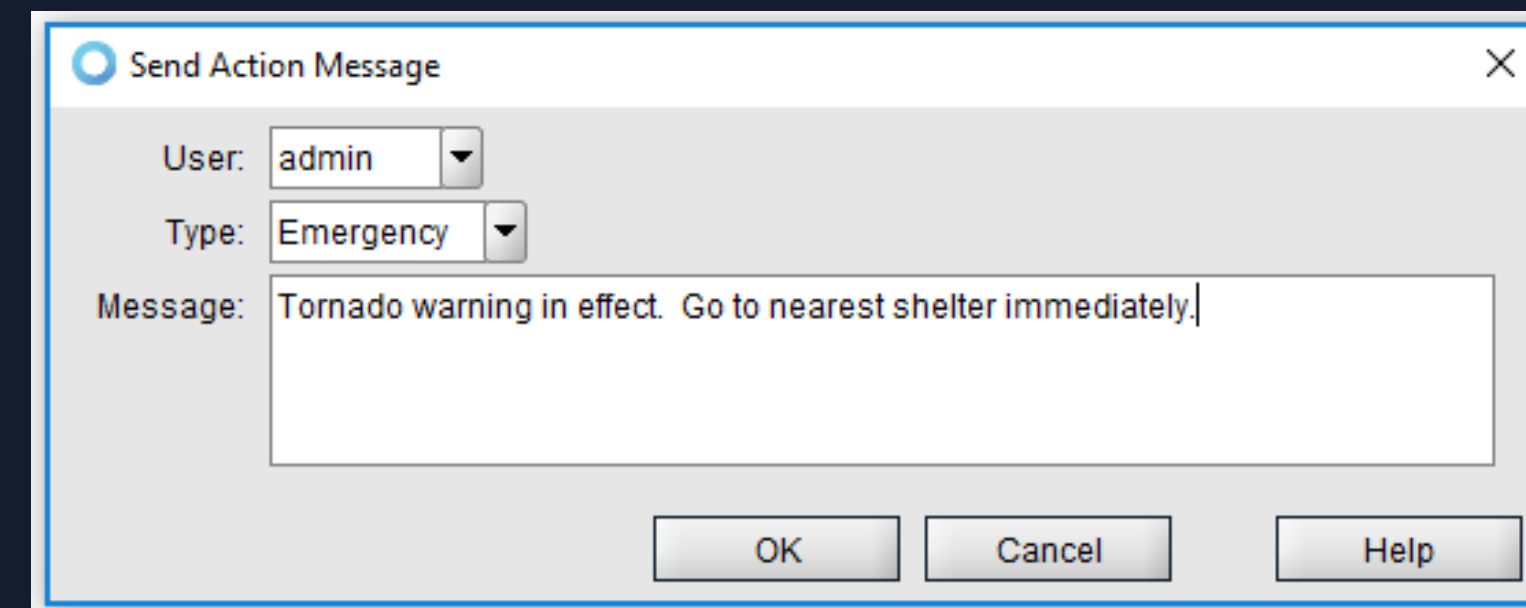
- *GPS position reporting is provided through direct data feed*
- *Location stamp is visible on all returned images from the device*
- *Active alerts display a breadcrumb trail for the device when in motion*



EMERGENCY ACTION MESSAGING

RiskBand wearers can receive near real-time Emergency Action Messaging to support situational awareness and emergency management operations.

- *Share key event details*
- *Provide a recommended course of action*
- *Update wearers as the situation evolves*
- *Share messages specific to their location*



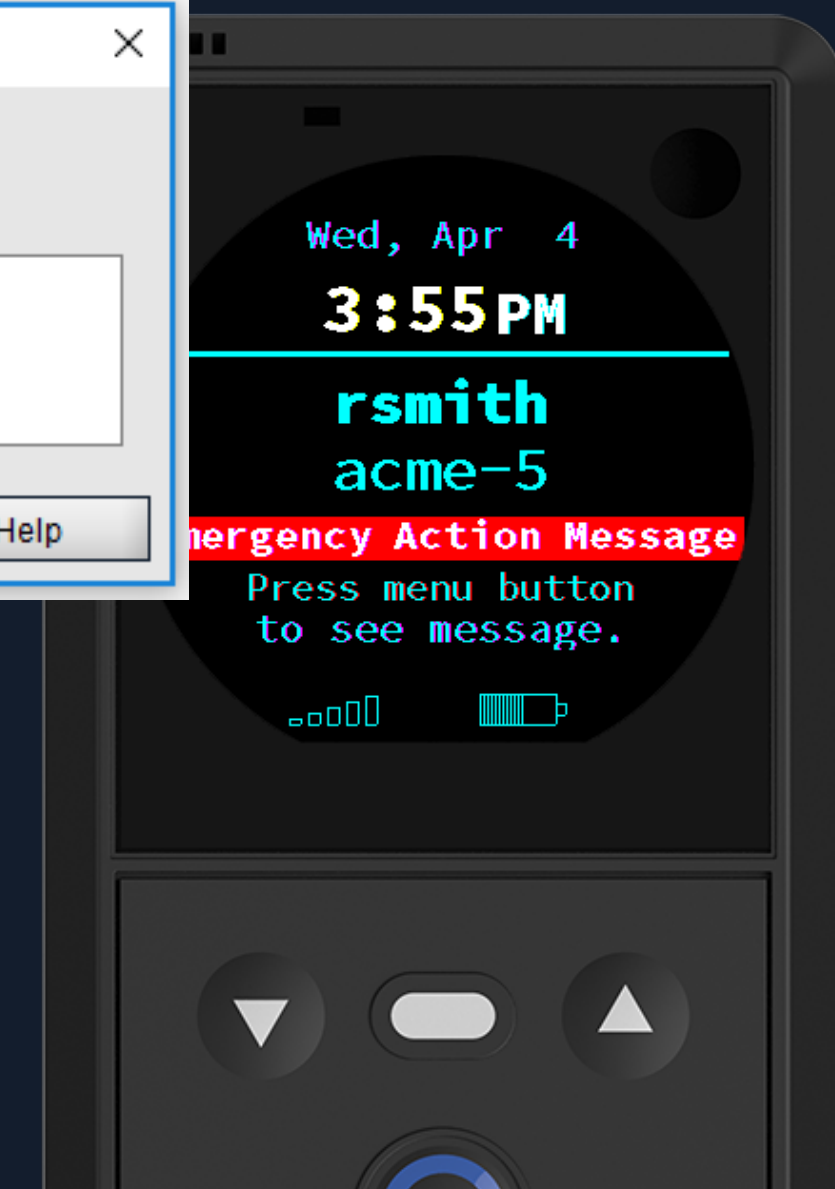
Send Action Message

User: admin

Type: Emergency

Message: Tornado warning in effect. Go to nearest shelter immediately.

OK Cancel Help



INTERNATIONAL AWARENESS

GEOS is an industry leader in crisis response and has impacted the rescue of thousands of people worldwide.

GEOS's team of FEMA-certified response team has partnerships with PSAPS in over 150 countries and capability to interact in 200 languages.



42,931+
INCIDENTS



7,525+
PEOPLE IMPACTED



164
COUNTRIES



FEMA



riskband
ARIES



GEOS



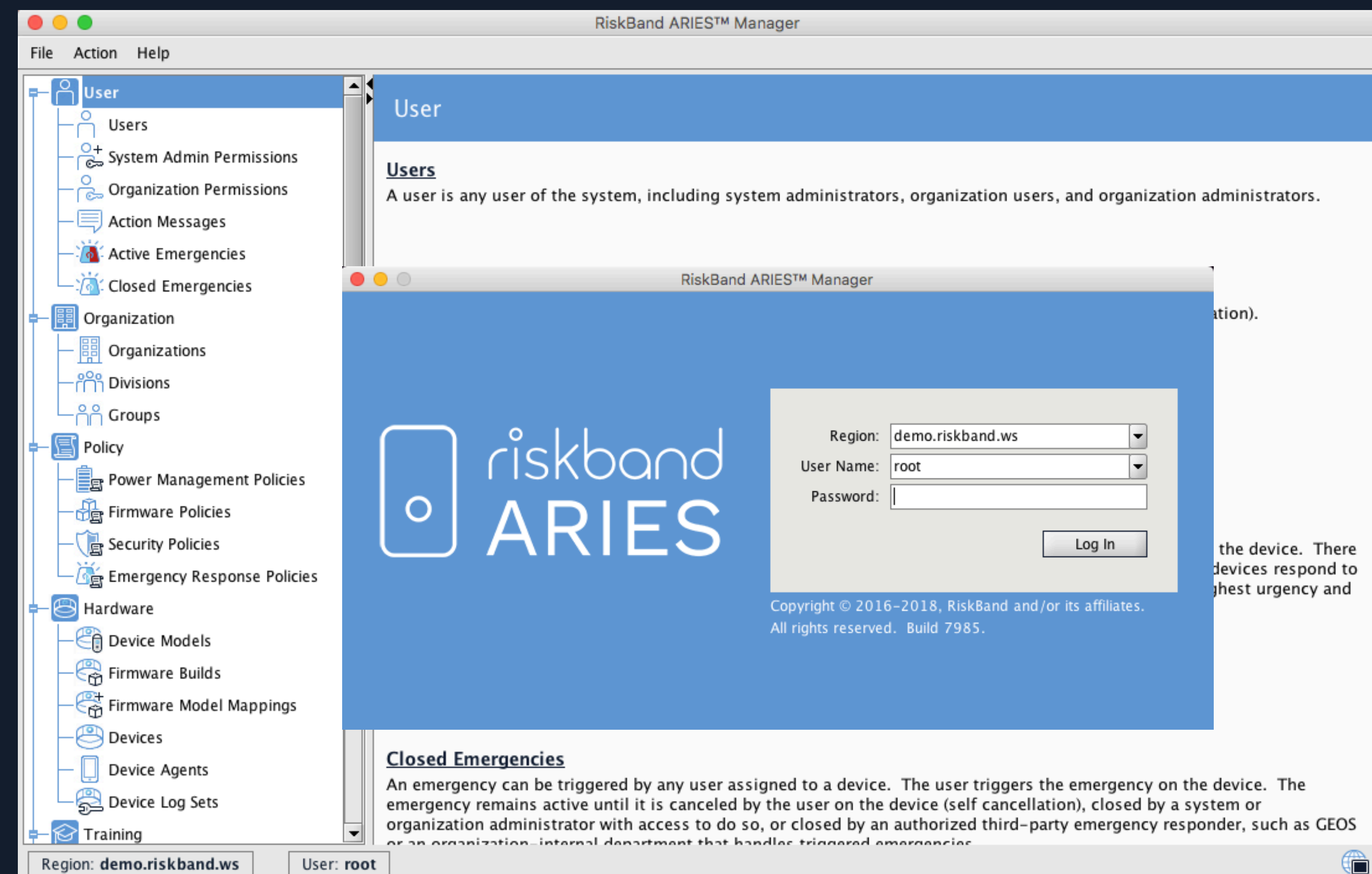
OPEN & CLOSED CONFIGURATIONS

	Wearer Connected to On-Site Security Personnel	Wearer Connected to GEOS
<i>Availability</i>	<i>Depends on Shift Manager's response and other distractions</i>	<i>GEOS connection is always available 24/7/365</i>
<i>Protocol</i>	<i>Varies by Manager's experience</i>	<i>FEMA-certified and trained response professionals</i>
<i>False Alarms</i>	<i>Manager provides feedback to the wearer</i>	<i>GEOS will pick up the phone and respond accordingly</i>
<i>Communication</i>	<i>Manager receives multiple alerts that a device has been alarmed</i>	<i>Manager still alerted via text, email, and/or phone call that an emergency is occurring</i>

SOFTWARE

ARIES Device Manager is a simple to use graphical interface

- *Software at no additional cost*
- *Load on multiple work stations*
- *Java client with auto updates*



SOFTWARE cont'd

User creation and management

- *Simple user creation*
- *Detailed profile management*
- *Granular organizational control*

The screenshot displays the RiskBand ARIES™ Manager interface. On the left is a sidebar with a navigation tree containing categories like User, Organization, Policy, Hardware, and Training. The main area shows the 'Users' management screen with a table of users and a context menu.

Users Table:

Login Name	First Name	Last Name	Assigned Devices	Organization			Effective Policies			
				Orga...	Division	Group	Device Firmware	Device Security	Emergency Response	Power Managem...
root	Default	Admin	--	--	--	--	--	--	--	--
alice	Alice	Squire	--	Dominos	--	--	[2] Stable	Disable Dev...	GEOS (Allow...	GPS Analytic...
hillary	Hillary	Trump	--	Dominos	--	--	[2] Stable	Disable Dev...	GEOS (Allow...	GPS Analytic...
jen	Jennifer	Scully	--	Dominos	--	--	[2] Stable	Disable Dev...	GEOS (Allow...	GPS Analytic...
ken	Ken	Smith	--	Dominos	--	--	[2] Stable	Disable Dev...	GEOS (Allow...	GPS Analytic...
rick	Rick	Crandall	--	Dominos	--	--	[2] Stable	Disable Dev...	GEOS (Allow...	GPS Analytic...
g61	User	One	● P1-5	G6 Hospi...	Property ...	--	[2] Stable	Enable All F...	GEOS (Allow...	Extended B...

Context Menu (Create User):

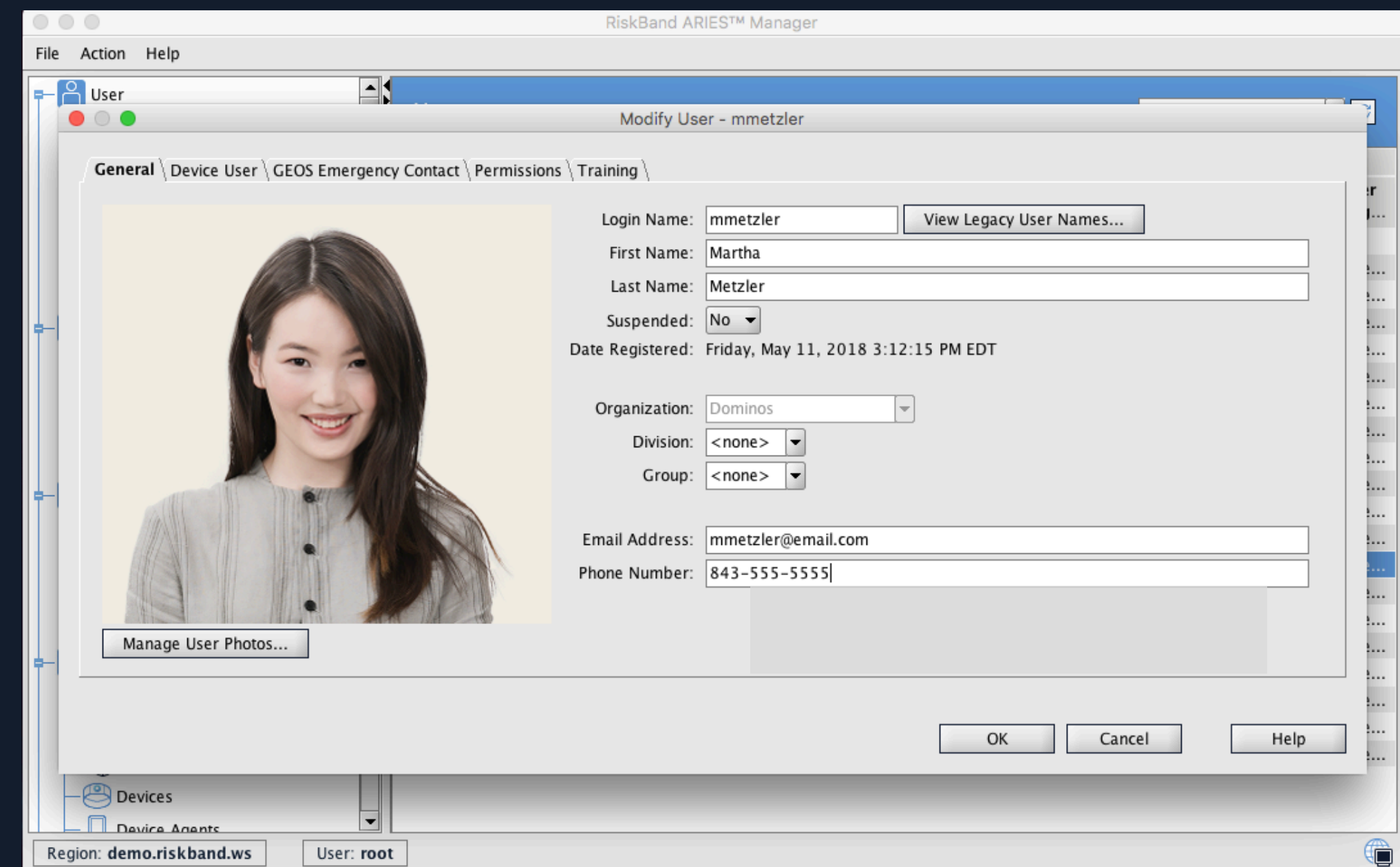
- Create User
- Modify User
- View User
- Delete User
- Reset Password
- Send Training Reminder Email
- Modify Organization Hierarchy
- Manage Permissions
- Manage User Photos
- View Training Courses
- Force GPS Call Home Now
- Track User
- Send Action Message
- Auto-Assign Devices to Users
- Unassign Devices from Users

Region: demo.riskband.ws User: root

KEY DASHBOARD DETAILS

When an alert is triggered, responders receive critical user profile information.

- *Main profile image*
- *Key personal information*
- *Known medical issues*
- *Emergency contacts*
- *Location on map layer*
- *Location stamped images*



The screenshot shows the 'RiskBand ARIES™ Manager' application window. A 'Modify User - mmetzler' dialog box is open, displaying the 'General' tab. On the left is a profile picture of a woman with a 'Manage User Photos...' button below it. On the right, the following fields are visible: Login Name (mmetzler), First Name (Martha), Last Name (Metzler), Suspended (No), Date Registered (Friday, May 11, 2018 3:12:15 PM EDT), Organization (Dominos), Division (<none>), Group (<none>), Email Address (mmetzler@email.com), and Phone Number (843-555-5555). A 'View Legacy User Names...' button is next to the Login Name field. At the bottom of the dialog are 'OK', 'Cancel', and 'Help' buttons. The main application window has a menu bar (File, Action, Help) and a sidebar with 'User', 'Devices', and 'Device Agents'. The status bar at the bottom shows 'Region: demo.riskband.ws' and 'User: root'.

ALERT DATA LOCATION

Real Time Location Data

- *Easily Accessed*
- *Stored with all Alert Data*
- *Bread Crumb Trail*
- *45 Second Cache*

View Emergency

Login Name: g61	Emergency Triggered: 4/19/18 2:41:30 PM EDT	User Profile...
First Name: User	Emergency Registered: 4/19/18 2:41:39 PM EDT	User Photos...
Last Name: One	Emergency Closed: --	
Organization: G6 Hospitality	Gender: Male	
User does not have a primary photo.	Age (yrs): 36	
Division: Property #1	Date of Birth: 4/19/82	
Group: --	GEOS Status: --	Emergency Artifacts...
Device Name: P1-5	All-Clear Passphrase: Go G6	Emergency Photos...
Email Address: jayr@riskband.com	Duress Passphrase: The Lights	
Phone Number: 843-847-7070		

g61 Apr 19, 2018 2:40:52 PM (last refreshed 27 seconds ago) Refresh Every Minute

Close Help

DASHBOARD TRACKING

Responders can track the wearer in near real-time, coordinating an accurate response. *The user interface of the RiskBand ARIES device manager can be equipped with location-specific maps.*

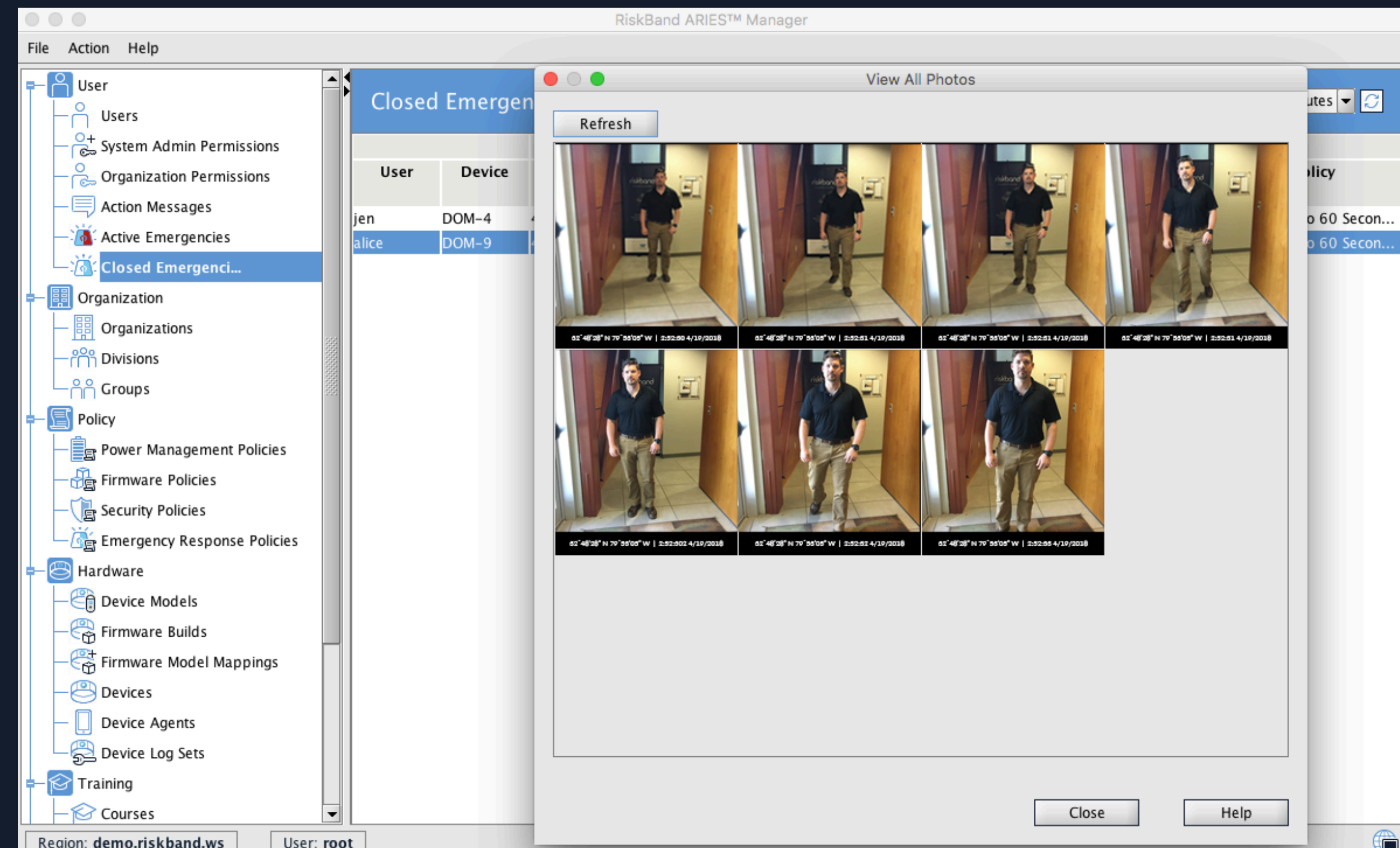
- *Display current location*
- *Ability to define “geo-fences” with specific rule sets for device functionality*
- *Breadcrumbs show previous location*
- *Ability to discern direction of travel*



ALERT DATA IMAGES

Accessing Alarm Data

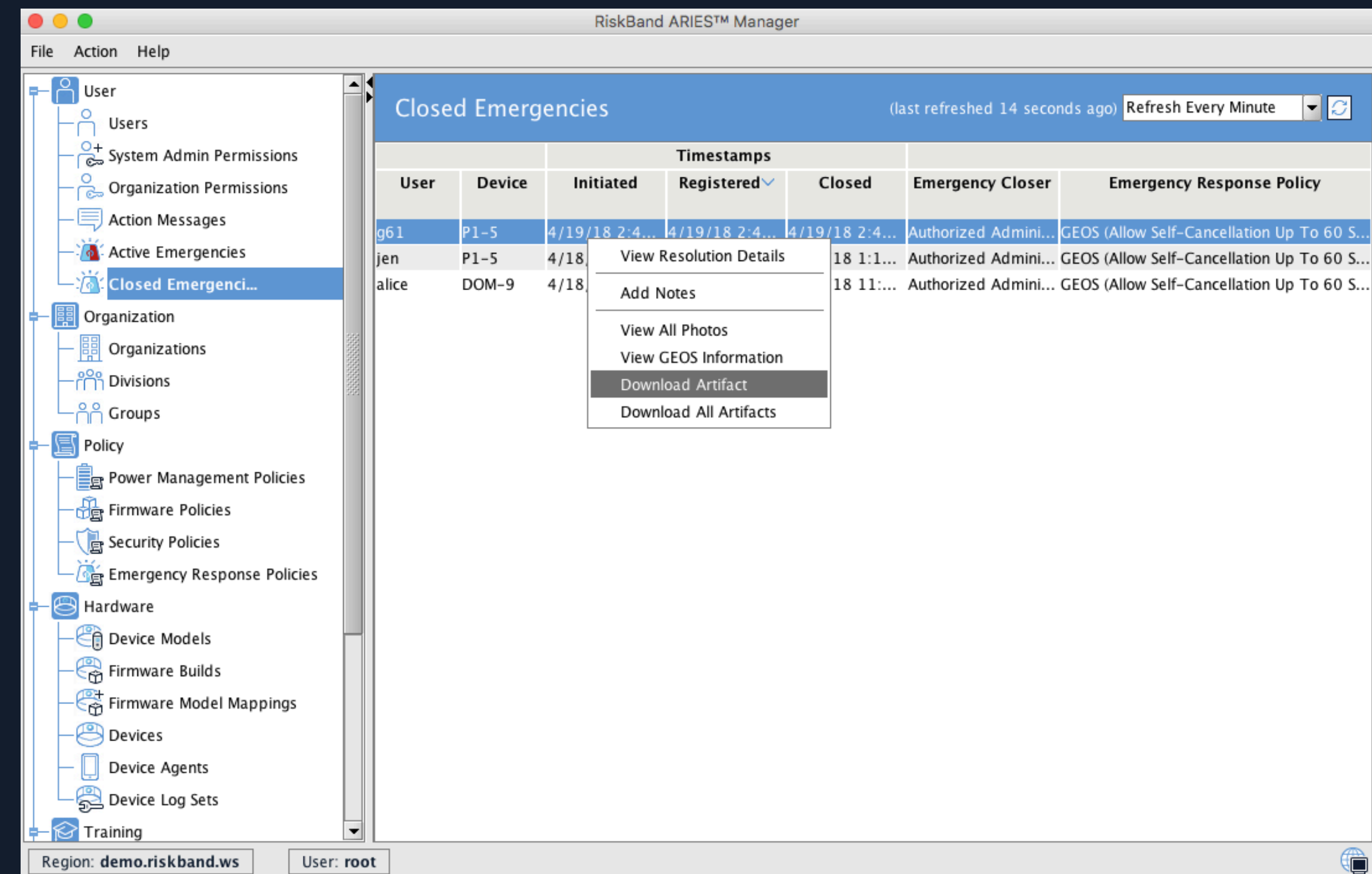
- *Easy to navigate interface*
- *All data rapidly available*
- *Granular Permission Controls*



ALERT DATA EXPORT

All Recorded and Stored Data

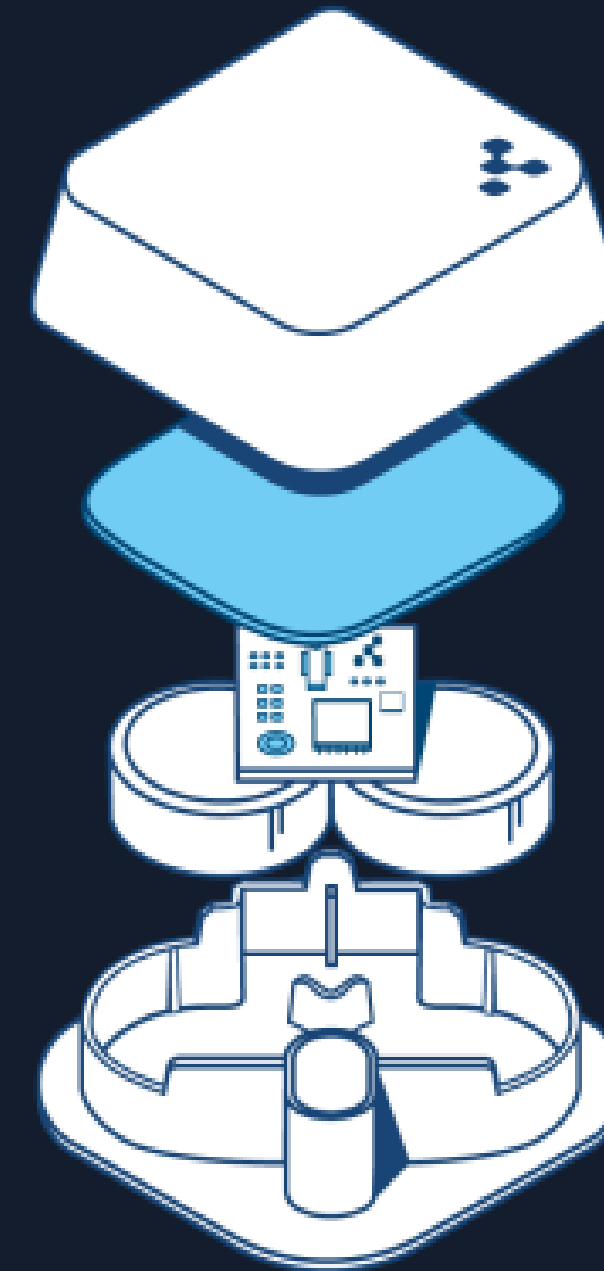
- *Easily exportable*
- *Encrypted for Chain of Custody*



RISKBAND INDOOR POSITIONING

RiskBand can provide for granular indoor positioning, to include multi-floor coverage using integrated network beacon technology.

- *Small*
- *No impact installation*
- *Battery powered*
- *2+ year run-time*
- *Detect and track*
- *Determine floor locations*
- *Configurable range*
- *Allow for alerting*
- *Customize deployment*
- *Data & reporting*
- *Rule based alerting*
- *Ease of maintenance*



ENTERPRISE INTEGRATION

Interoperability

Restful server architecture communicates directly with non-mobile desktop client for ease of management.

Extensibility

Designed upon AWS, a single instance of RiskBand Enterprise Deployment can scale to 1 million users.

Security

Designed with industry best cyber practices, RiskBand employs strong cryptographic solutions to protect data. RiskBand hardware is designed with enhanced tamper protect technology.

Integration

RiskBand has an extensive catalogue of APIs and SDK offerings to allow for third party integration with existing security applications.

INTEGRATION

COP and CAD Integration

APIs and SDKs allow for integration into your existing security system and architecture to include computer aided dispatch and Emergency Action Messaging.

- *Receive all RiskBand data*
- *Integrate with EAM capability*
- *GEO-fence response operations*
- *Choose a closed or blended response model*



THANK YOU



RISKBAND.COM