

EMERGENCY PREPAREDNESS: ARE YOU AS READY AS YOU THINK YOU ARE?

PPSA PROFESSIONAL DEVELOPMENT CONFERENCE

JUNE 2019

GEORGE KOLESAR

DIVISION SAFETY MANAGER

PAPER NA, SONOCO

BEING PREPARED

SONOCO PRODUCTS COMPANY'S HARTSVILLE, SC PAPER COMPLEX EXPERIENCED ONE OF THE WORST DISASTERS IN THE HISTORY OF THE COMPANY IN SEPTEMBER OF 2018

HURRICANE FLORENCE CREATED RAINFALL THAT RESULTED IN THE HARTSVILLE PAPER COMPLEX EXPERIENCING A RECORD FLOOD WATER LEVEL.

THE FLOOD SHUT DOWN THE ENTIRE HARTSVILLE PAPER COMPLEX

SOME DETAILS:

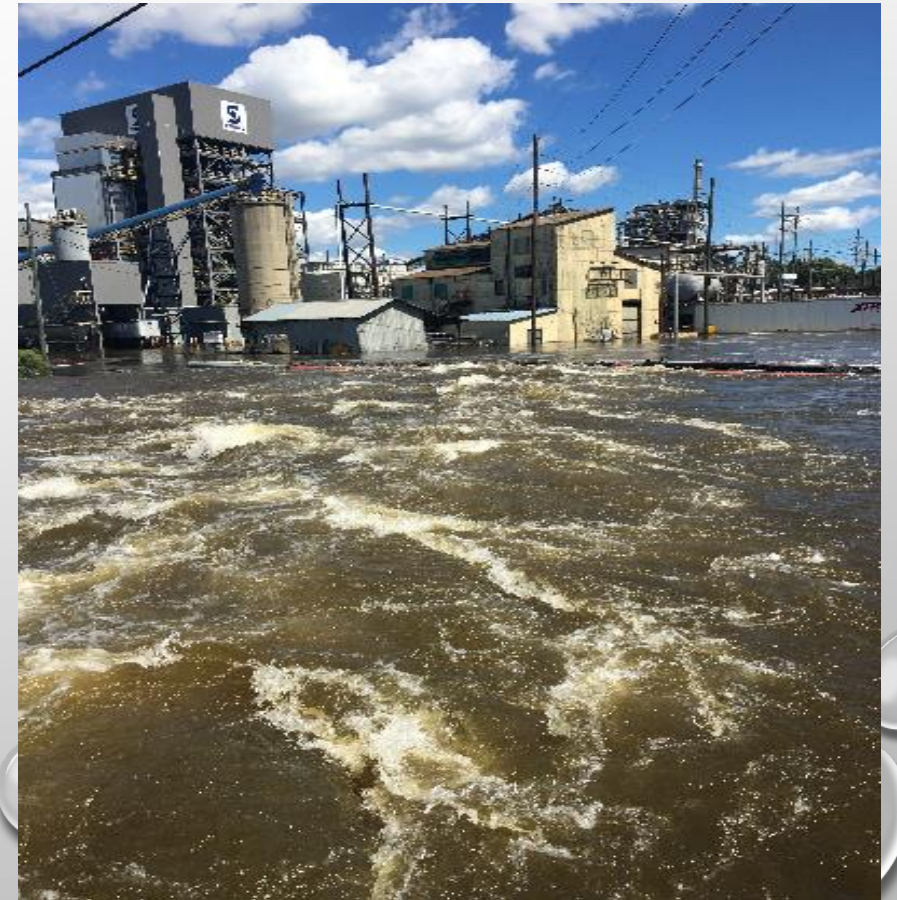
OVER 400 ELECTRIC MOTORS WERE UNDER WATER

FIRE SYSTEM WAS KNOCKED OUT OF SERVICE

FINISHED PRODUCT WAREHOUSE FLOODED

ACCESS BRIDGES AFFECTED (SHIFTED BY THE FORCE OF THE FLOOD WATERS)

OVER 400 EMPLOYEES POTENTIALLY AFFECTED





BEING PREPARED – WHAT WENT WRONG

- WHEN THE RAIN FALL BEGAN THE MILL IMPLEMENTED IT'S NORMAL EMERGENCY PROTOCOL
 - THE LAKE/DAM WATER FLOW CONTROL WAS OPENED TO LOWER THE LAKE WATER LEVEL; HOWEVER THE INCOMING FLOW WAS GREATER DUE TO OTHER COMPANIES DISCHARGING THEIR DAMS AS WELL
 - THE WATER LEVEL INCREASED AT A RATE THAT COULD NOT BE CONTROLLED RESULTING IN THE DEVASTATING FLOOD WATER LEVELS

CONSIDERATIONS: WHAT IS YOUR PLAN FOR:

- EQUIPMENT RECOVERY AND RECONDITIONING?
 - OVER 400 ELECTRIC MOTORS THAT NEEDED REPAIRED/REPLACED
 - PUMPS, GEARBOXES, ETC.
 - ELECTRICAL GEAR
 - ELECTRONIC CONTROLS
- MANPOWER FOR CLEANUP?
 - TREMENDOUS EFFORT TO CLEAN AN ENTIRE COMPLEX
- STRUCTURE EVALUATION AND REPAIR?
 - WE HAD TWO BRIDGES AND A UTILITY BRIDGE THAT WERE DAMAGED
- PRODUCT RECOVERY
 - WAREHOUSE OF FINISHED PRODUCT DAMAGED



CONSIDERATIONS:

- INSURANCE

- DO YOU KNOW THE DETAILS OF YOUR POLICY
- OUR CARRIER PROVIDED TREMENDOUS SUPPORT
 - PROVIDED FINANCIAL SUPPORT
 - HAD RESOURCE RECOMMENDATIONS FOR:
 - CLEAN UP CREWS
 - EQUIPMENT SUPPORT
 - ENGINEERING SUPPORT
- CONSTANT OVERSIGHT AND INSPECTION

GETTING BACK TO BUSINESS

- THE RECOVERY TOOK 17 DAYS
- THE RECOVERY TEAM
 - MANAGERS AND LEADERS FROM THE COMPANY, CONTRACTORS, SUPPORT GROUPS
 - MET TWICE A DAY TO REVIEW THE PLAN AND ACCOMPLISHMENTS
- THE COMPANY KEPT ALL THE EMPLOYEES ON PAYROLL
 - THE EMPLOYEES WERE ON SITE CLEANING AND PREPARING THE EQUIPMENT TO START UP AS SOON AS THE RECOVERY EFFORT WAS COMPLETE
- THE RECOVERY TEAM RECOMMENDED IMPROVEMENTS TO THE EMERGENCY ACTION PLAN
- THE COMPLEX RETURNED TO NORMAL OPERATIONS FOLLOWING THE 17 DAY UNPLANNED OUTAGE

