

# Best Practices Preparing for a Shutdown: A Contractor's Perspective

Presented to:



June 25, 2019

- Intro / Who We Are
- Best Practices
  - Engineering
  - Schedule
  - Pre-Planning with Client
  - Standardization
  - Emergency Services
  - Overhead Crane Use
  - Creature Comforts
  - Lock Out / Tag Out
  - Contractor Lockout Control
- Conclusion

Who We Are

- Industrial General Contractor
- Headquartered in Oshkosh, Wisconsin with 8 satellite offices throughout the United States
- Privately held business, established in 1888
- Focus on superior customer service and long-term relationships
- We perform hundreds of projects ranging from less than \$1,000 to more than \$300 million during the course of any single year
- Design / Build Capabilities
- Registered Professional Engineer (PE) in 24 States
- Office staff of 184 personnel
- Over 325 Field Staff Superintendents and Foremen
- Average field staff of over 900 with peaks to over 1,500
- OSHA VPP Star Demonstration Mobile Workforce Designation Since 2006.

## ■ Top 400 Contractors

RANK			2018 REVENUE (\$ MIL)	
2019	2018	FIRM	TOTAL	INT'L
199	331	CR MEYER, Oshkosh, Wis.	460.7	0.0

enr.com May 27/June 3, 2019 ■ ENR

## ■ Top 20 Industrial Contractors

RANK		FIRM	Top 20 Revenue: \$14.6 Billion Top 20 Market Share: 72.5%
2019	2018		
15	**	CR MEYER	

enr.com May 27/June 3, 2019 ■ ENR

## ■ Top 10 Pulp & Paper Contractors

PULP & PAPER		
RANK	FIRM	REVENUE (\$ MIL.)
1	CR MEYER	172.5

ENR SOURCEBOOK ■ September 17, 2018 enr.com

**NOTE: 69% of our business is associated with the Pulp & Paper industry**

# CR Meyer Offices - Locations



## CORPORATE OFFICE

895 W 20th Avenue / Oshkosh WI 54902 / PH 920.235.3350

## SATELLITE OFFICES

1890 N Stevens Street / Rhinelander WI 54501 / PH 715.369.2223

510 Lombardi Avenue / Green Bay WI 54304 / PH 920.436.0164

1717 N 26th Street / Escanaba MI 49829 / PH 906.233.9914

2516 Glade Street / Muskegon MI 49444 / PH 231.739.9232

103 Industrial Drive / Coleraine MN 55722 / PH 218.245.2766

1001 Fort Gibson Road / Catoosa OK 74015 / PH 918.254.4347

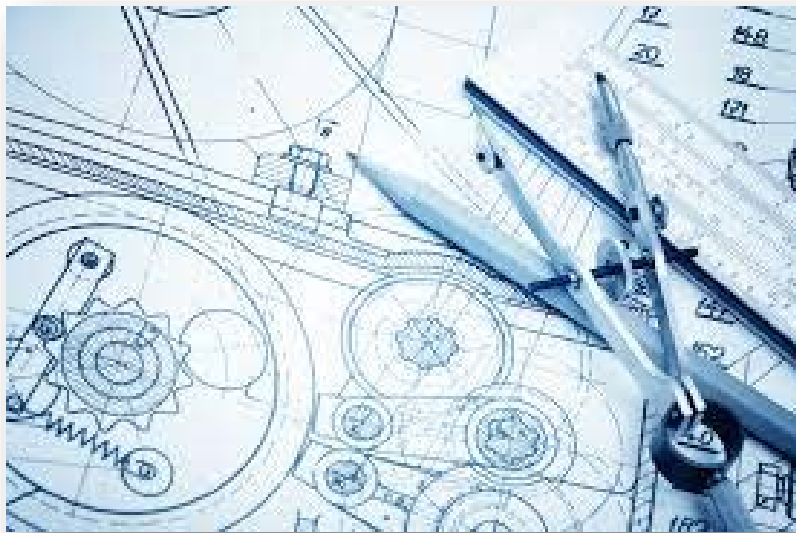
108 Pat Joiner Boulevard / Byron GA 31008 / PH 478.956.3331

100 Morton Avenue / Chester PA 19013 / PH 610.874.0231

Best Practices in  
Preparation for a Shutdown:

A Contractor's Perspective

- Engineering



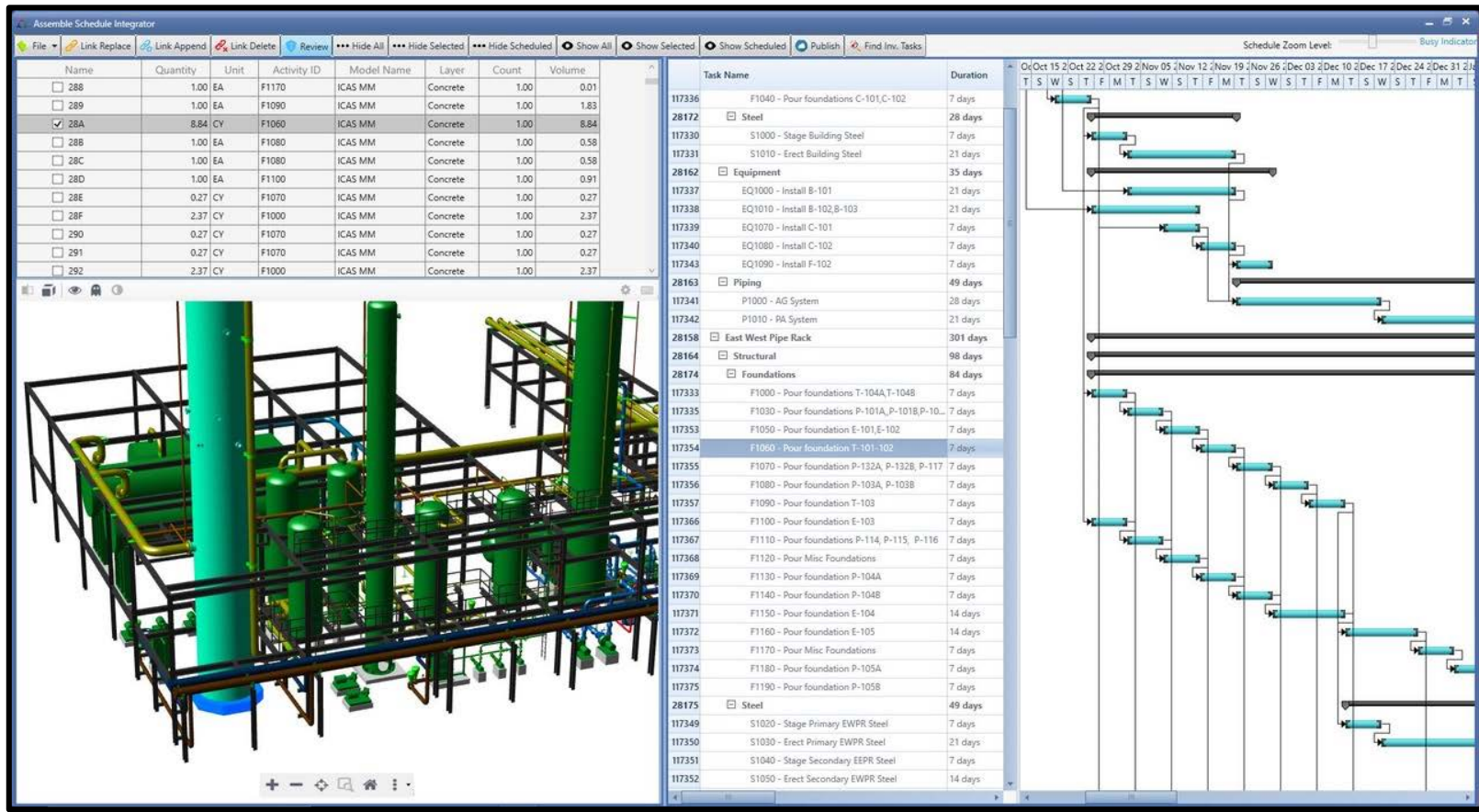
- Detailed Engineering
  - Field Verification
  - Pipe Hanger Design
- Means/Methods
  - Engineered Picks
  - Excavations
  - Shoring



# Outage Pre-Planning



- Schedule
  - Fatigue Management
  - Scope Change = Schedule Change
  - Pre-Work if Possible



# Outage Pre-Planning

- Pre-Planning with Client
  - JSA's
  - Meetings with Client Project Leads
  - Construction vs. Engineering Check-Out
  - Hazardous Material (i.e. Asbestos, Lead, etc.)
  - Walk the Project Together



# Outage Pre-Planning

- Standardization
  - Facility to Facility
  - LOTO
  - Fire Watch Expectations
  - Confined Space
  - Enforcement



# Outage Pre-Planning

- Emergency Services
  - ERT
  - Confined Space Rescue
  - Fire Response
  - Occupational Clinics





# Outage Pre-Planning

- Overhead Crane Use
- Capacities
- Overhead Crane Inspections
  - Annual
  - Periodic



# Outage Pre-Planning

- Creature Comforts
  - Break Areas
  - Bathroom Facilities
  - Parking
  - Access Routes to Facility/Work Areas
  - Ventilation
  - Blackouts



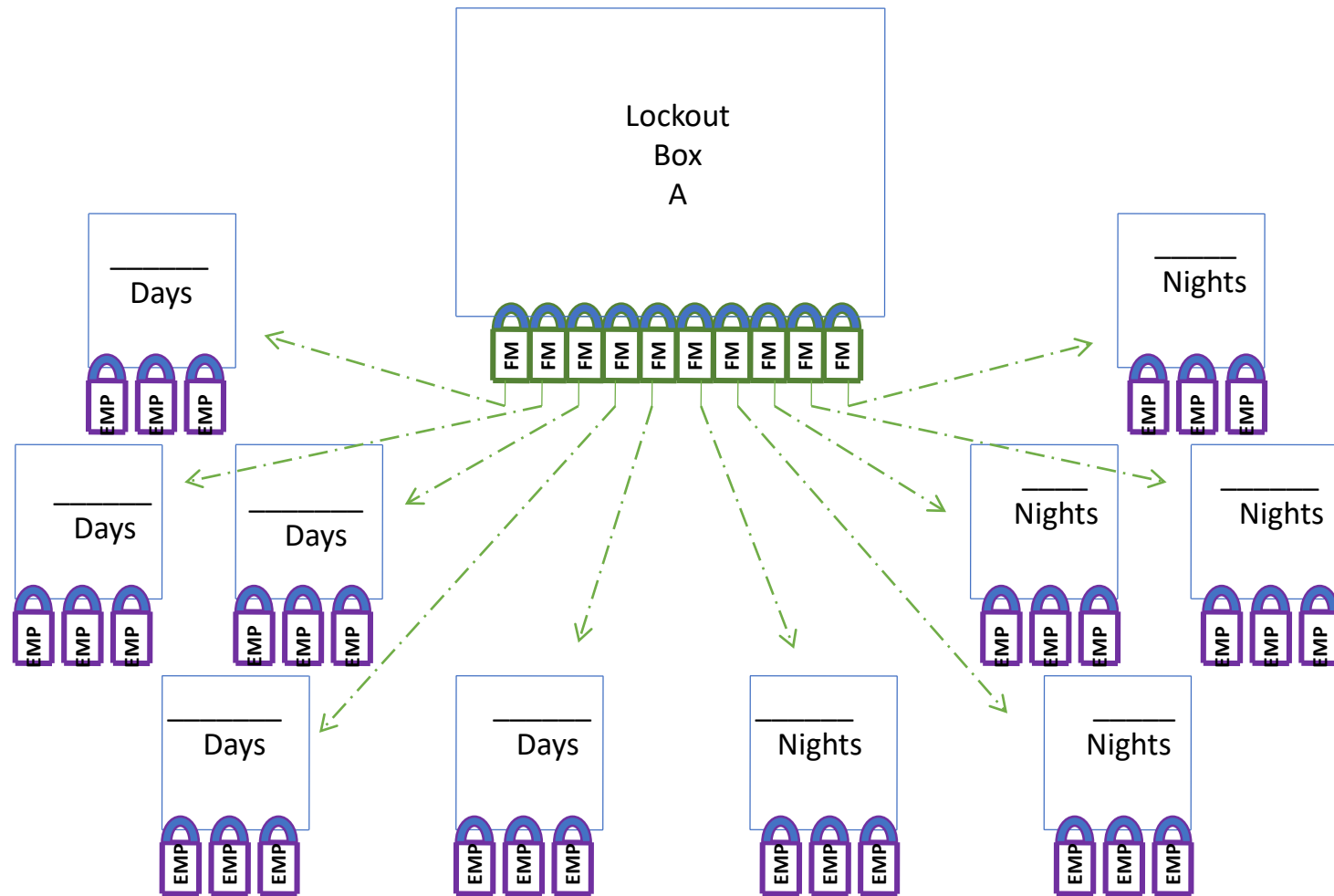
# Outage Pre-Planning



- Lock out / Tag Out



# Contractor Lockout Control





- No one remembers if a shutdown came in on time or not, but if someone is injured, you remember every detail.



Thank You!  
Questions/Comments

[www.crmeyer.com](http://www.crmeyer.com)