

October 2021

Cowpens Mill

PPSA Conference 2021

Pulper Safety Improvement and LCE Reduction

Pulper Team Mission Statement

To reduce risk and improve conditions for all operators working in and around the Pulper area.

Make improvements needed so that daily task can be performed without the risk of an LCE/PLCE.

Charter Statement

The primary objective of the Pulper Pillar Team is to;

Drive improvement in Safety behaviors and conditions.

Provide support for the processes of the pulper operator tasks.

Reduce risk of any preventable LCE while performing daily tasks
at pulper.

Ensure that every job will have the equipment and training needed
for the task to be performed safely.

Goals

Improve the Operation and Safety of our Pulper system through assessing risks and improving the equipment available for our operators use and make the job as safe and efficient as possible.

Reduce risks associated with employee tasks.

ALWAYS REMEMBER SAFETY FIRST

Pulper Pillar Team

The Pulper Pillar Team was formed in November 2019

Issues are prioritized based on the risk of possibility of an LCE occurring

Representatives from each operations crew, and administrative employees meet each month for our updated assessment. They bring forth issues at the pulper area that come up each month.

Team had the first meeting to list all hazards and risk using the hazrac system

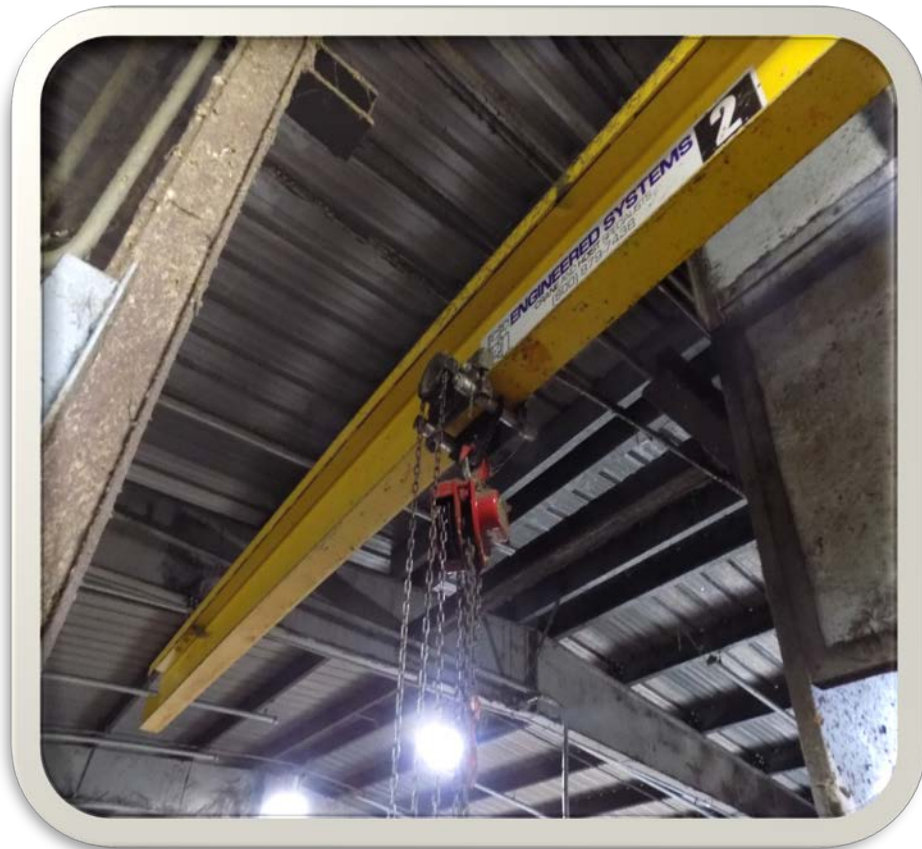
Hazrac Assessment

Dept	Area	Equip	Affected Group	Potential Hazard	Date	Frequency	Probability	Severity	Overall Rating	Date	Overall Rating	% Reduction
Pulper	BTM Ply	Pulper	Operators	Tail too big	Nov-19	5	5	5	125	Nov-20	50	60%
Pulper	BTM Ply	Pulper	Operators	Chute I-beam too low	Nov-19	4	5	5	100	Nov-20	50	50%
Pulper	BTM Ply	Pulper	Operators	Tail too big	Nov-19	4	5	5	100	Nov-20	50	50%
Pulper	BTM Ply	Pulper	Operators	Horizontal removal of tail from chute	Nov-19	4	5	5	100	Nov-20	50	50%
Pulper	BTM Ply	Pulper	Operators	Dropping tail to basement from deck	Nov-19	4	5	5	100	Nov-20	50	50%
Pulper	BTM Ply	Pulper	Operators	Removing broken tail from pulper tub	Nov-19	4	5	5	100	Nov-20	40	60%
Pulper	BTM Ply	Pulper	Operators	Clam shell slips	Nov-19	5	5	5	125	Nov-20	25	80%
Pulper	BTM Ply	Pulper	Operators	Trash under bottom chain at pulper tub	Nov-19	5	3	3	45	Nov-20	45	0%
Pulper	BTM Ply	Pulper	Operators	Tailcutter doesn't work	Nov-19	5	5	3	75	Nov-20	45	40%
Pulper	BTM Ply	Pulper	Operators	Tail Cutter Undersized	Nov-19	4	4	3	48	Nov-20	24	50%
Pulper	BTM Ply	Pulper	Operators	Replace with electric hoist	Nov-19	2	4	3	24	Nov-20	18	25%
Pulper	BTM Ply	Pulper	Operators	Height lost with installation of beam	Nov-19	2	5	3	30	Nov-20	18	40%
Pulper	BTM Ply	Pulper	Operators	Pan on chute too small/edges rough	Nov-19	5	4	2	40	Nov-20	10	75%
Pulper	BTM Ply	Pulper	Operators	Uncut Bales	Nov-19	5	4	2	40	Nov-20	5	88%

Results of Improvements to Pulper Operation

Old hoist system (manual chain fall)

Installed new powered hoist system at bottom ply pulper for ragger tail handling



Hoist allows ragger tails that are too large for tail chute to be lowered to the basement floor easier.



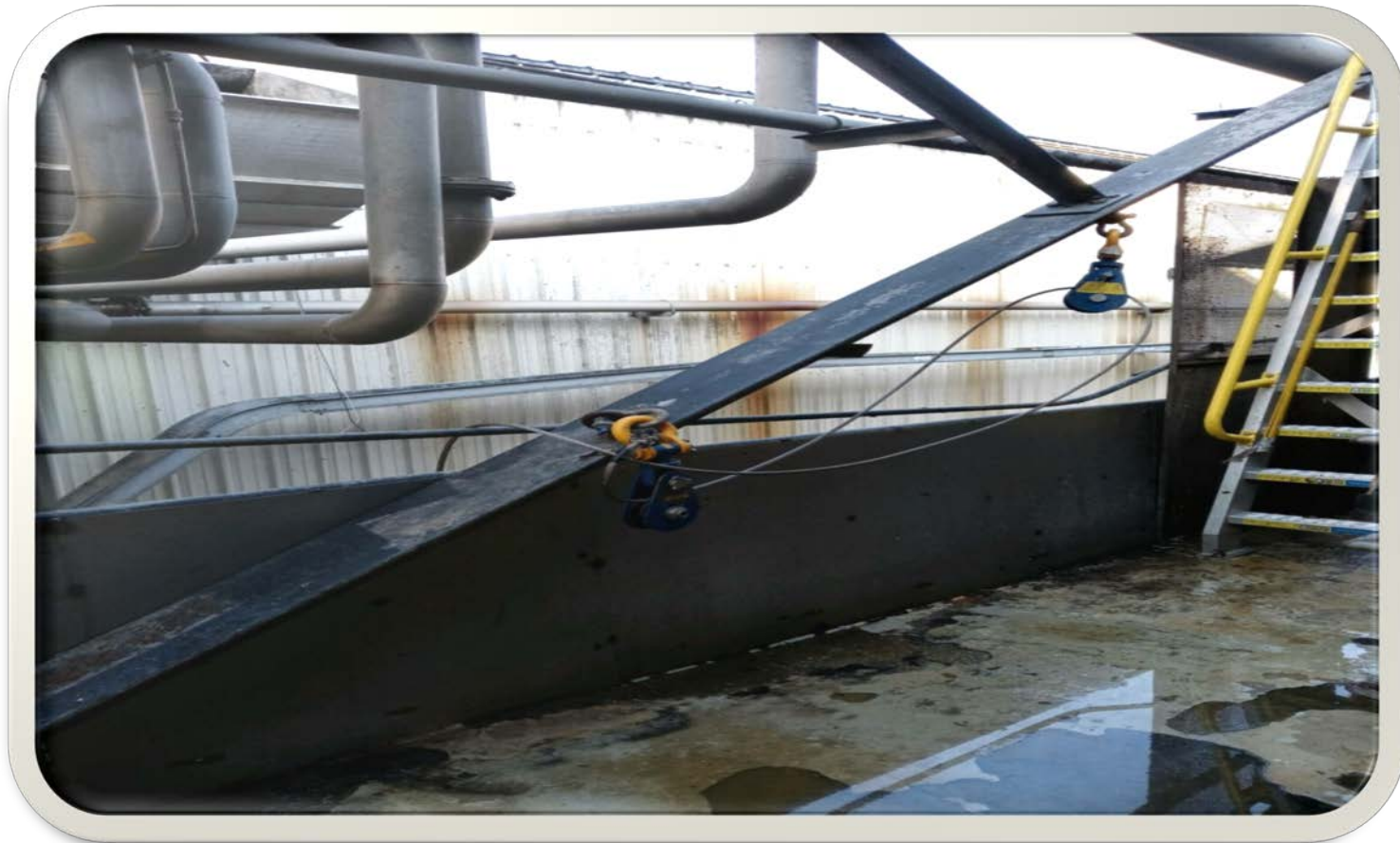
Re-surfaced floors under pulper area and added skid resistant strips for pedestrian Safety



Removed vertical ladders and added stairs to the pulper area as well as throughout the mill.



Added cable system to help with the ragger tails on top ply; now operator is out of the line of fire, reduced LCE possibility.



Added access door to bottom ply tub for easier ragger tail removal



Work In Progress

With changes made, the HAZRAC was reduced 57.5%, which greatly improves the operators ability to perform tasks Safely and efficiently.

The Pulper Pillar Team will continue meeting monthly and make changes that will improve the job for operators and assess any risk that may come up to make sure we do everything possible to prevent LCE/PLCE's.

**ALWAYS REMEMBER
SAFETY FIRST**

