

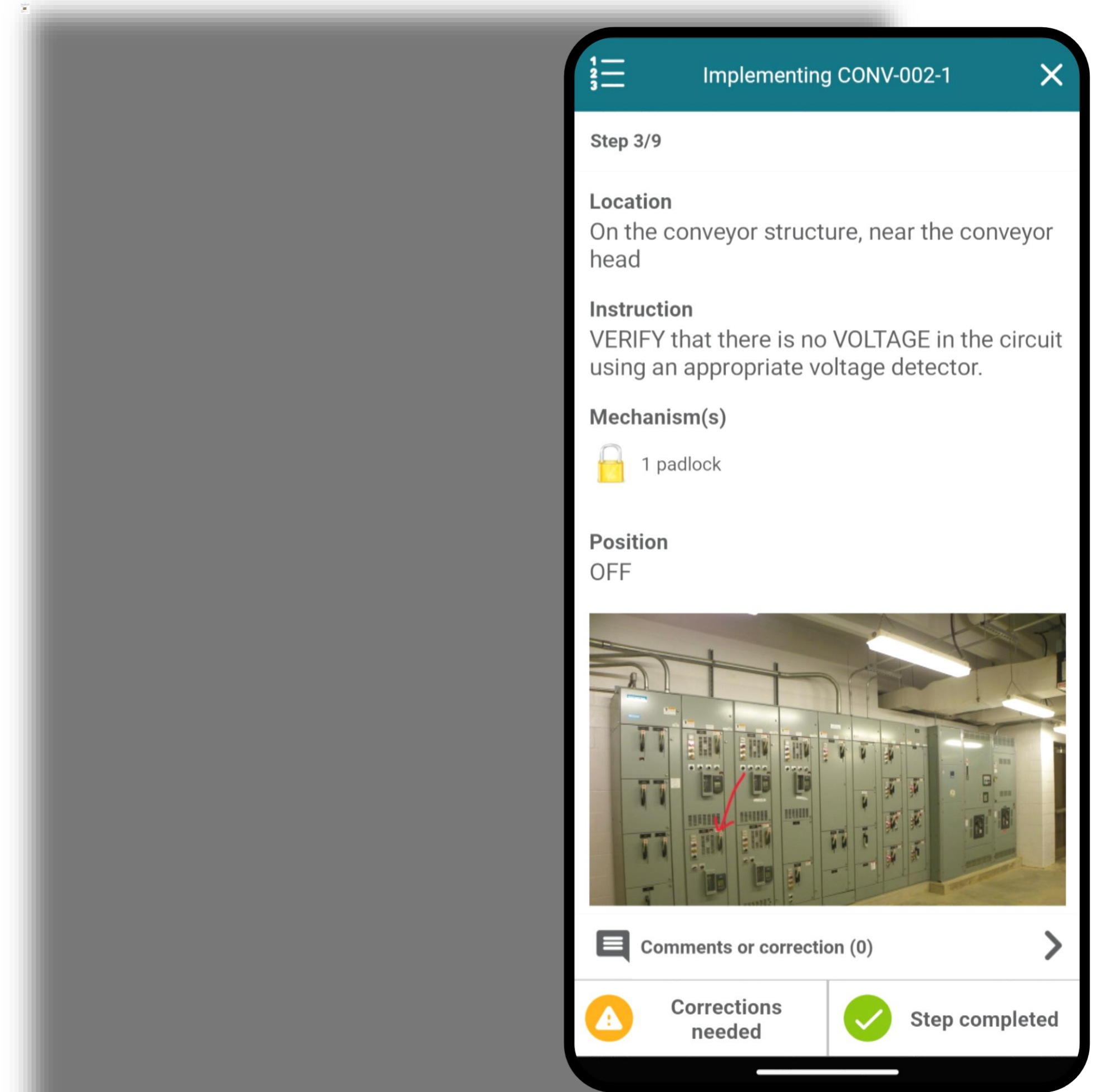
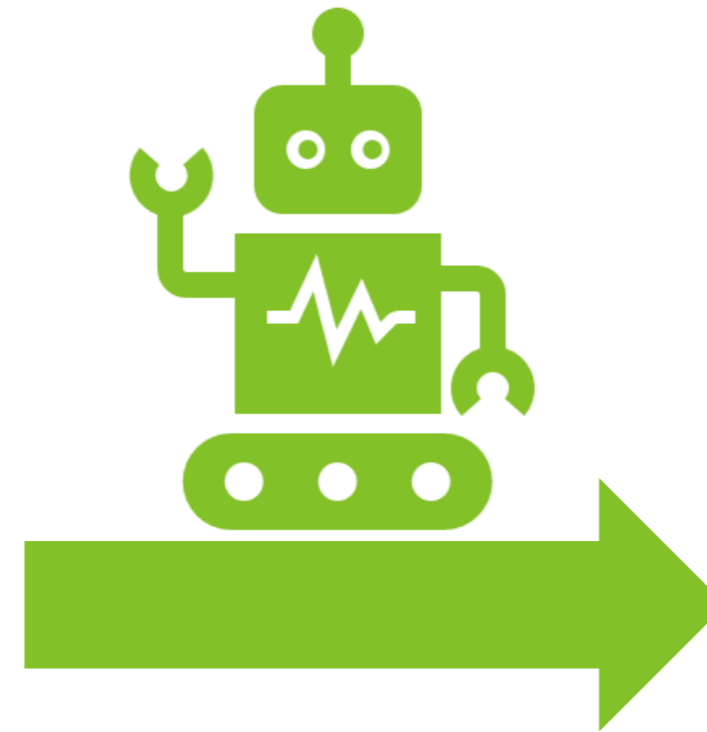
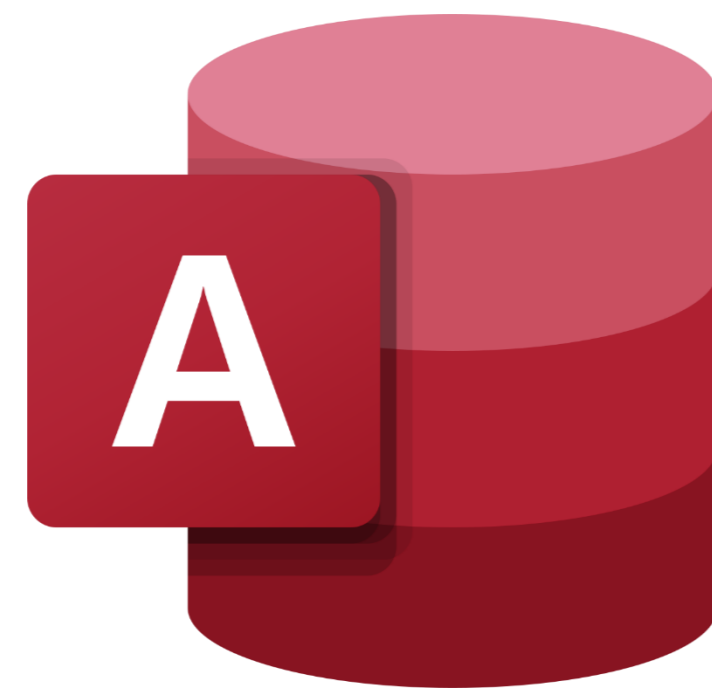
CONFORM@IT®

**INNOVATION DOESN'T
ALWAYS GO AS PLANNED...**

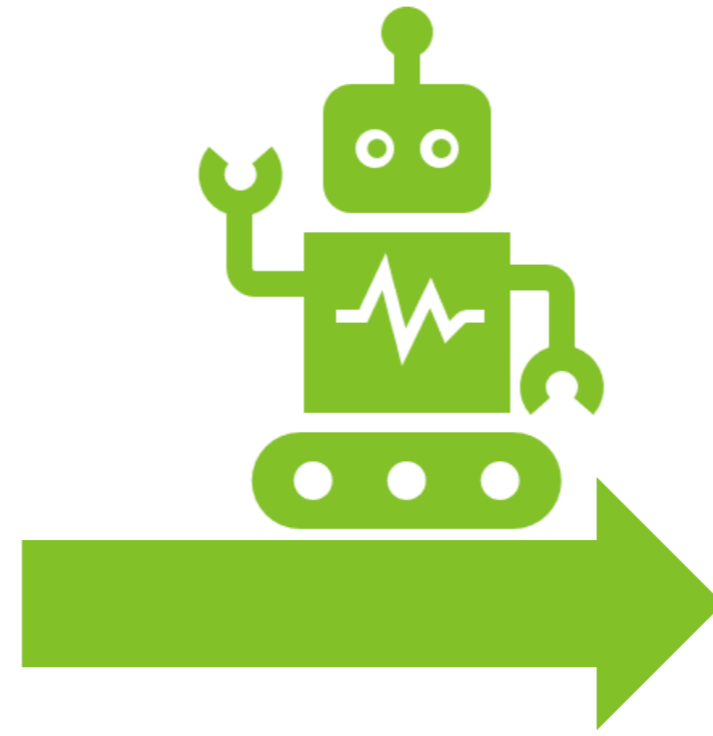
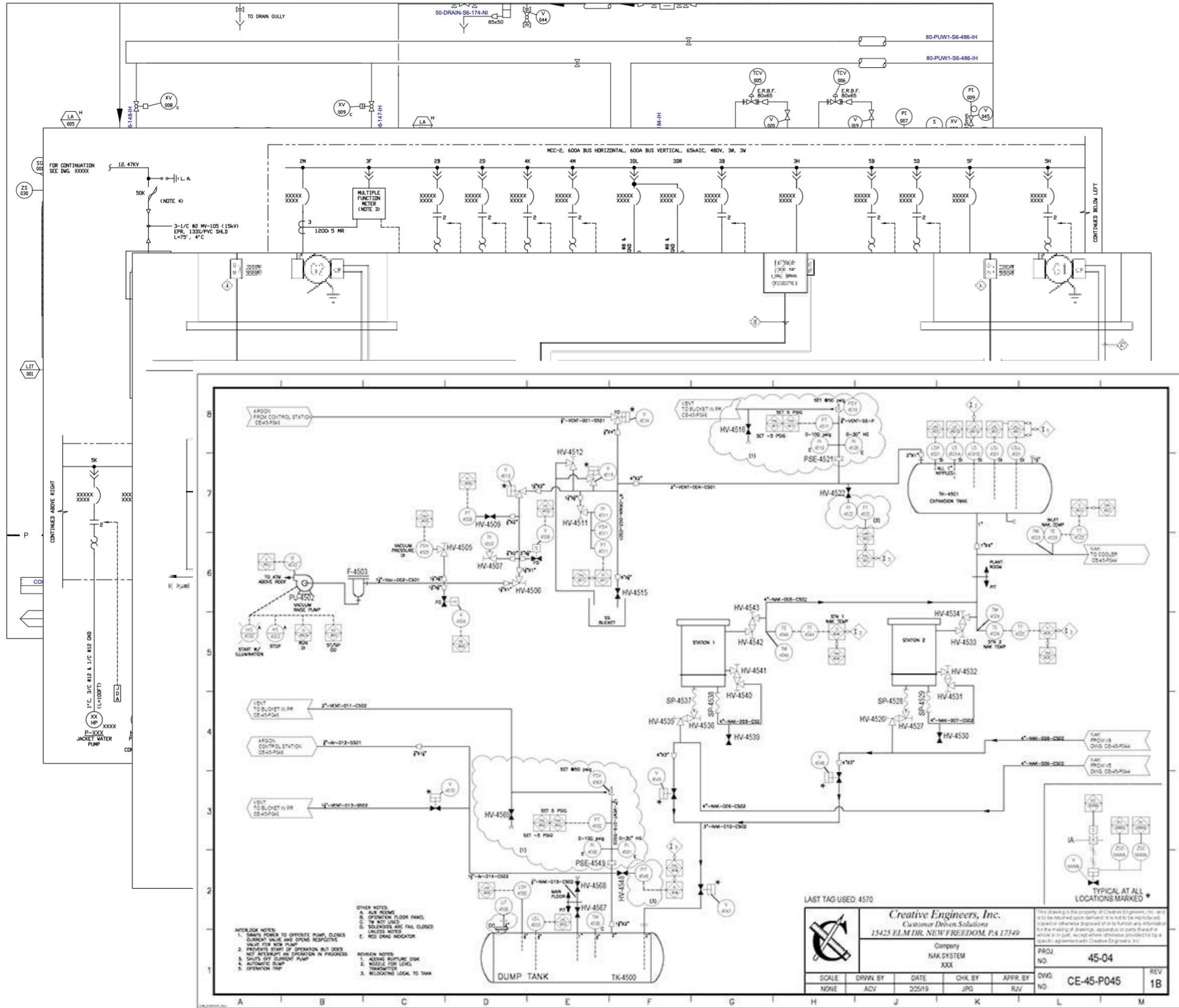
SOME OF OUR PULP & PAPER CLIENTS



OUR PAST INNOVATION



OUR PLANNED INNOVATION



✕
Implementing CONV-002-1

Step 3/9

Location
On the conveyor structure, near the conveyor head

Instruction
VERIFY that there is no VOLTAGE in the circuit using an appropriate voltage detector.

Mechanism(s)
🔒 1 padlock

Position
OFF

Comments or correction (0) >

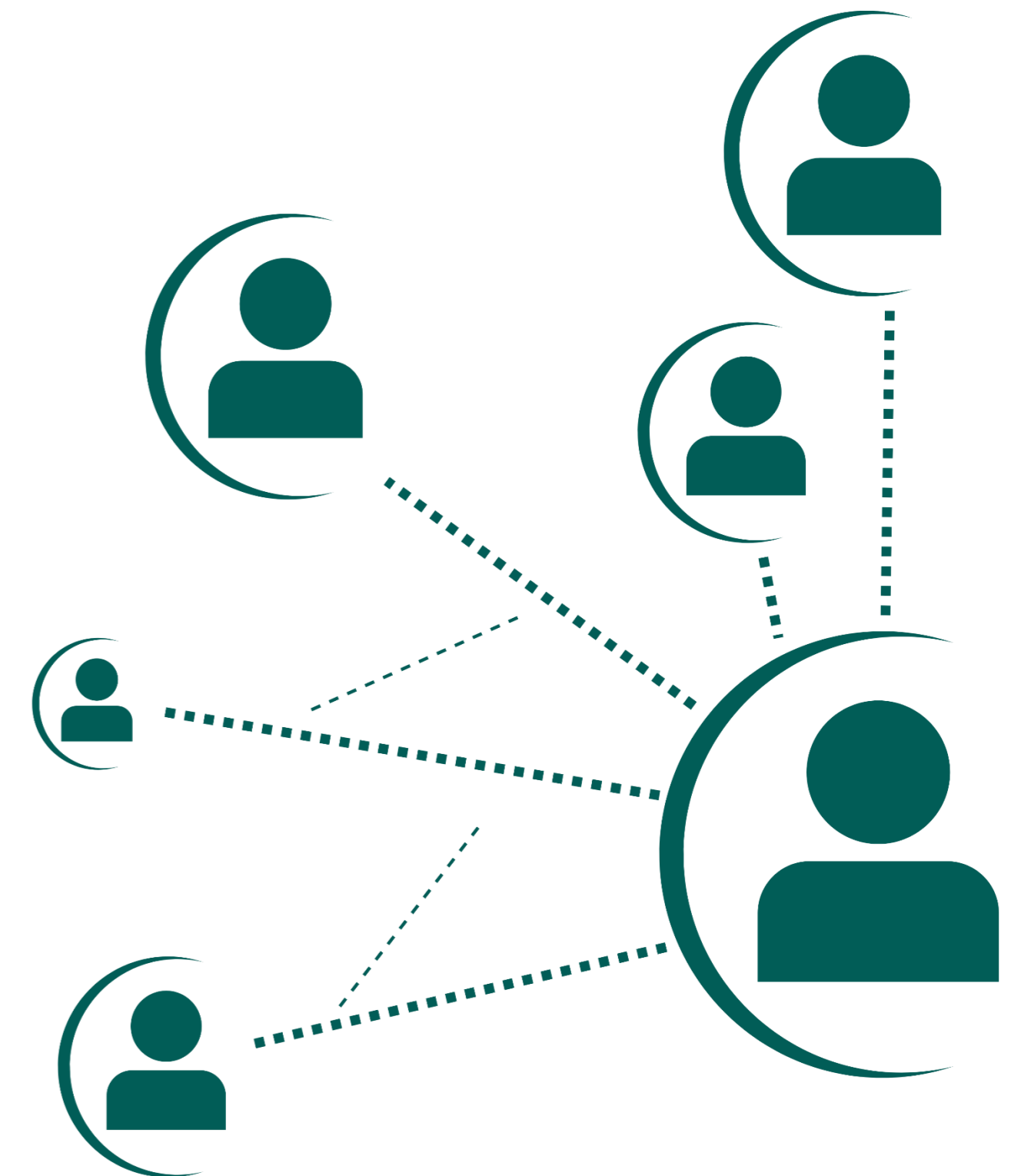
Corrections needed

Step completed

THE MAN BEHIND THE REDIRECT



JEAN | A.K.A. JOHNNY



BRINGING IT ALL TO FRUITION



ASK JOHNNY



VIP ACCESS



SAY HELLO TO JOHNNY!

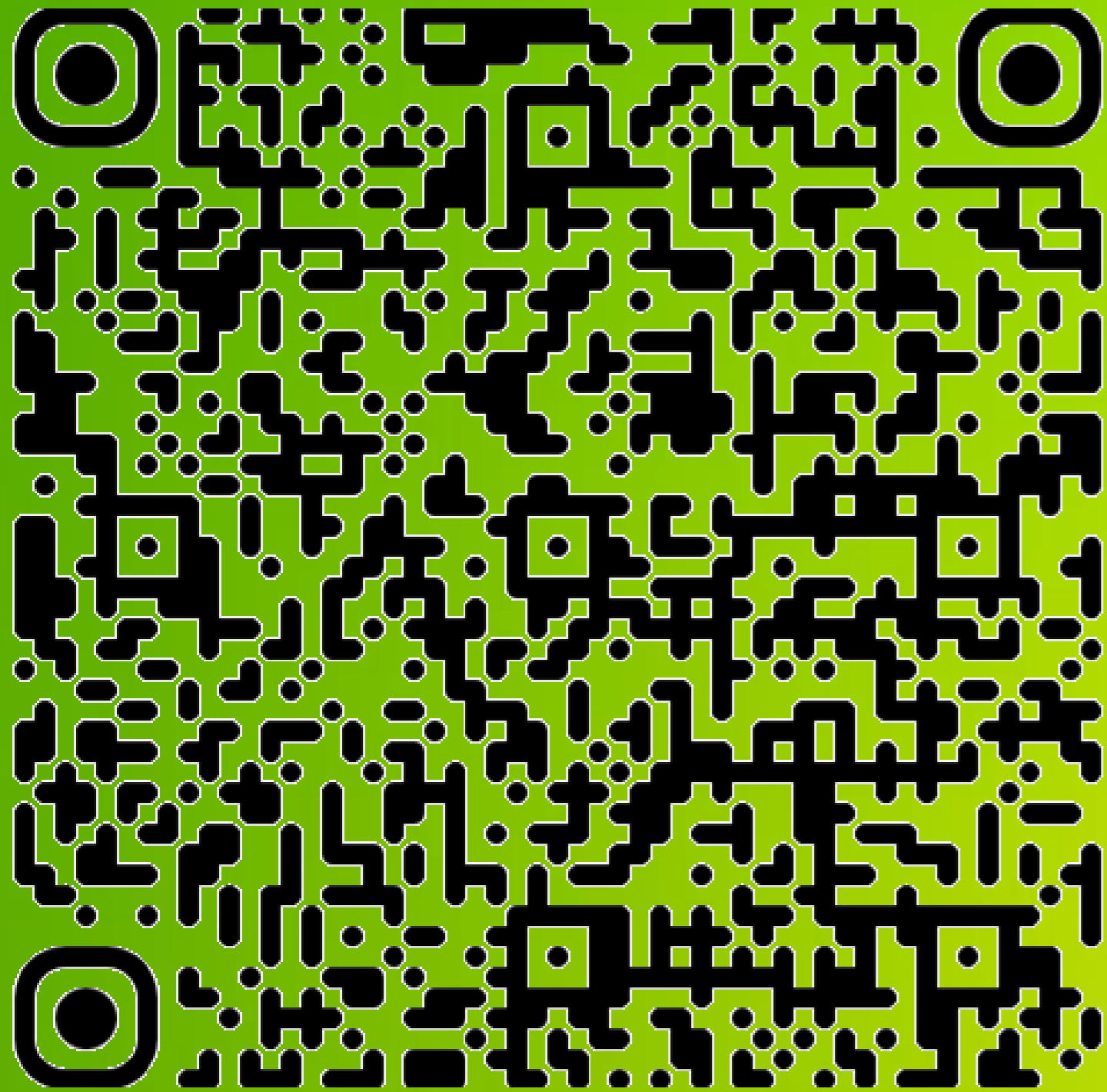
The screenshot displays the 'EHS.ai | Ask Johnny' interface. At the top left, the logo 'EHS.ai | Ask Johnny' is visible. The top right navigation bar includes 'My Favorites', 'Prompt Library', 'Help & Resources', and a user profile icon. On the left side, there is a sidebar with a home icon and a plus sign. The main content area features four question cards:

- Card 1:** Can you outline the key components of an effective Occupational Health and Safety Management System according to the latest ISO 45001 standards?
- Card 2:** What are the primary environmental considerations a company must take into account when conducting an Environmental Impact Assessment (EIA) for a new manufacturing site?
- Card 3:** How should an organization manage and dispose of hazardous waste to ensure compliance with both local legislation and international best practices?
- Card 4:** What are the critical steps in conducting a thorough incident investigation to identify root causes and prevent recurrence of a workplace accident?

At the bottom of the main area is an 'Ask Johnny' input field with a submit button. Below it, a small disclaimer reads: 'Johnny can make mistakes. Make sure to verify important information.'

On the right side, there is a 'Sources' panel with a right-pointing arrow and the text 'No references'.

...SOMETIMES IT TURNS
OUT EVEN BETTER!



BOOTH
35

CONFORMit®