

# PPSA 2015

## PROTECTION SYSTEM AGAINST WATER INFILTRATION ON GAS DETECTOR

«THE GERRY»

WINDSOR, JUNE 9<sup>TH</sup>, 2015

Jean-Claude Allaire  
Operation Manager



# Domtar

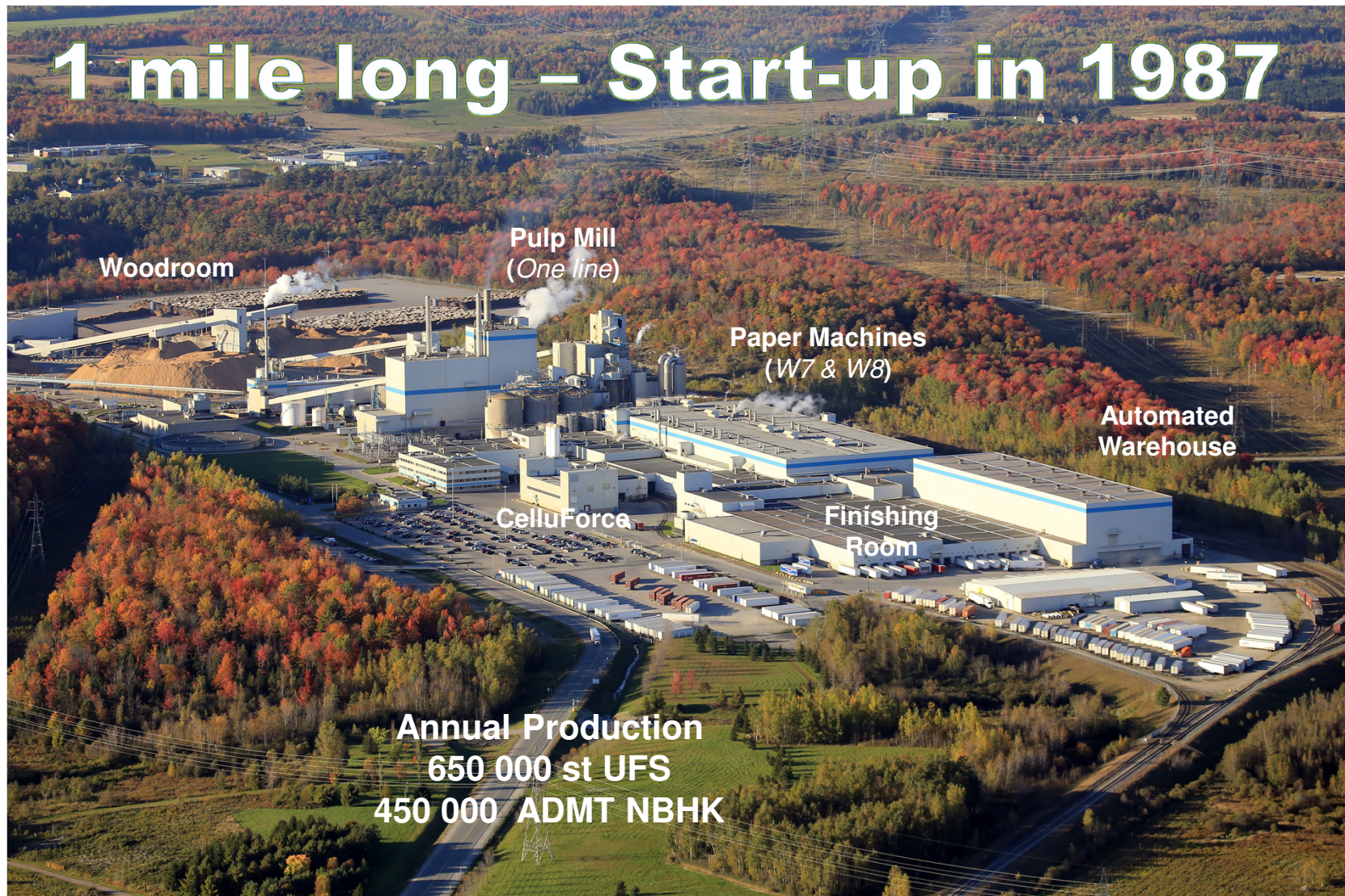


PART OF  
**150 YEARS**  
of Windsor's history



**The original Windsor Mill**

# WHO WE ARE



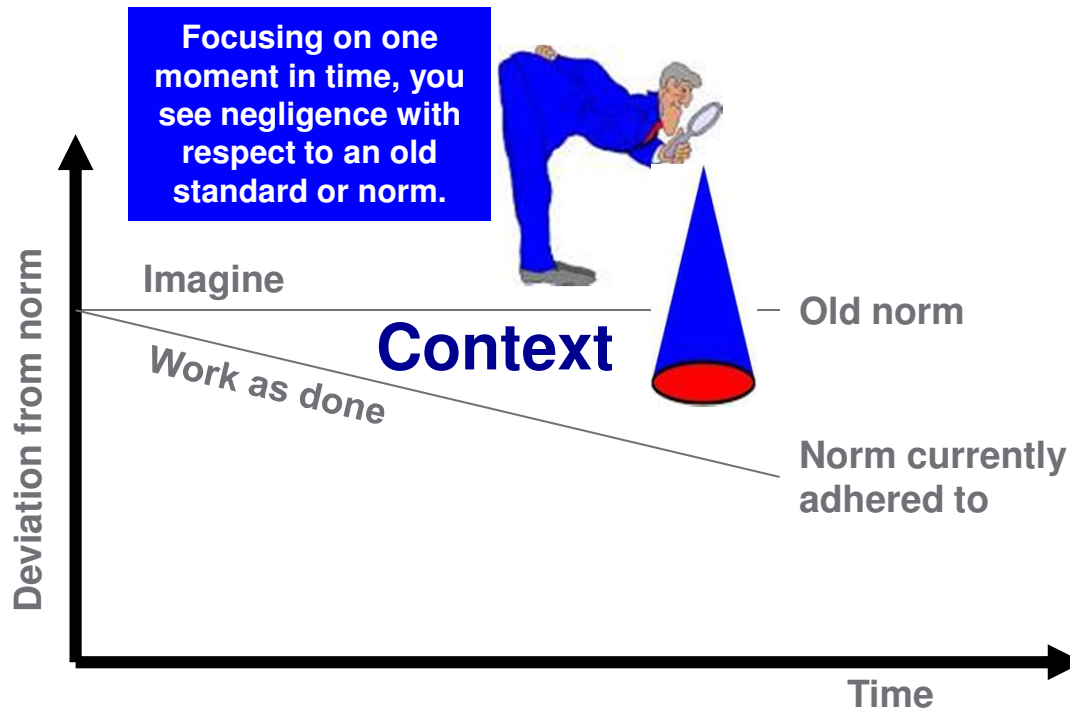
# THE CONTEXT

---

- After lockout procedures, the first step to delivery the confined space for maintenance works is to wash up the work environment.
- The cleaning activities are performed during the night shift, **by the contractors (lack of knowledge)**, with **minimal supervision** and with the clear goal of delivering the equipment the next morning (**time pressure**).
- The gas detector is installed in a dry environment but the **conditions change** ...cleaning generates a lot of water mist which is sucked in by the gas detector and forces the gas detector to stop.
- The workers, **frustrated** by multiple alarms, end up removing the gas detector which is creating an unsafe working environment (**lack of alternative indication**).

Red = Error precursors

# THE CONTEXT



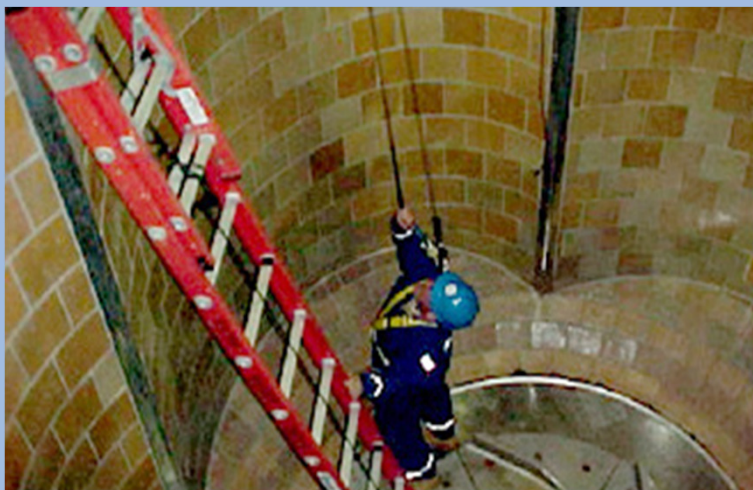
*To drift is human*

**Therefore, remove the gas detector when cleaning inside a confined space became the new norm (tolerated by workers).**

**A behavior may have become the new norm across an entire operation or organization**

# THE PROBLEM

Working inside a confined space  
without a gas detector



Is like putting your head inside a gator  
mouth

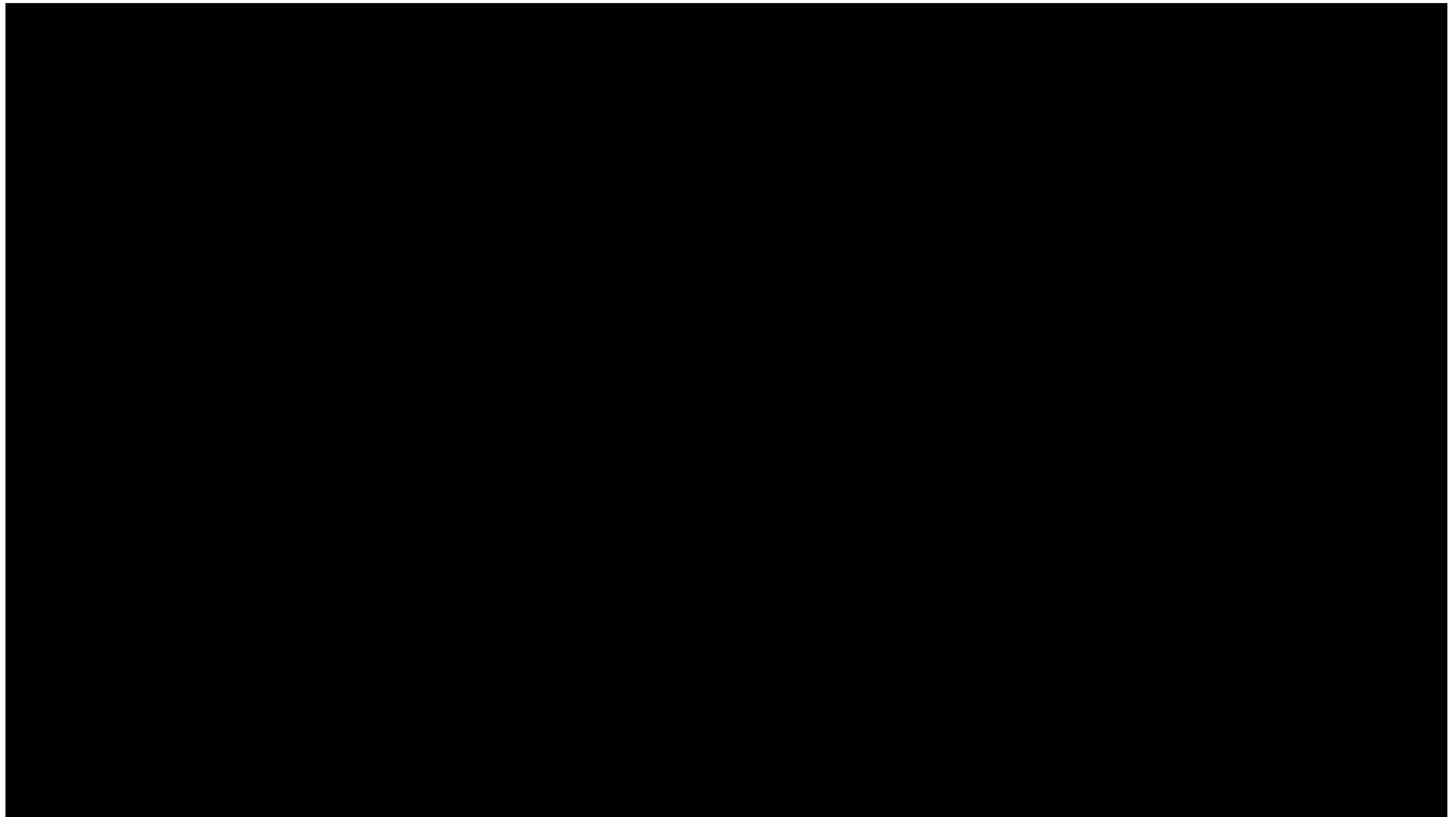
## THE INNOVATION «THE NEED»

---

- There is no system currently on the market that could resolve this issue effectively. It was necessary to innovate.
- In the spring of 2014, a device to prevent water from getting sucked in by the gas detector was developed by an employee.
- Since then, we have started using this new device and employees have named it “The Gerry” (created by Gérard Sergerie).

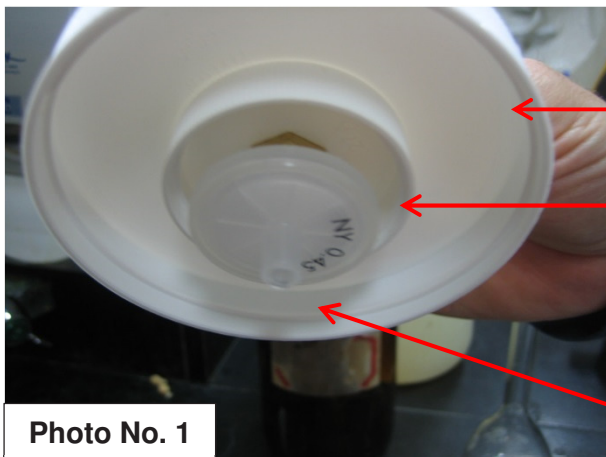
# THE INNOVATION «HOW IT WORKS»

---





# THE INNOVATION «HOW TO MAKE IT»

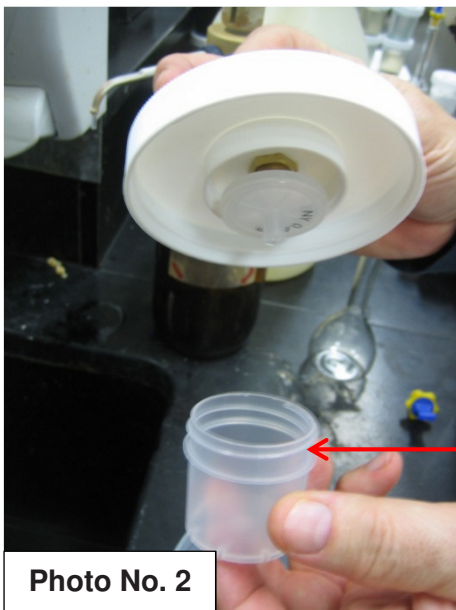


Cover of internal container "A"

Cover of internal container "A"

Filter of gas detector

Photo No. 1



Internal container « A »

Photo No. 2

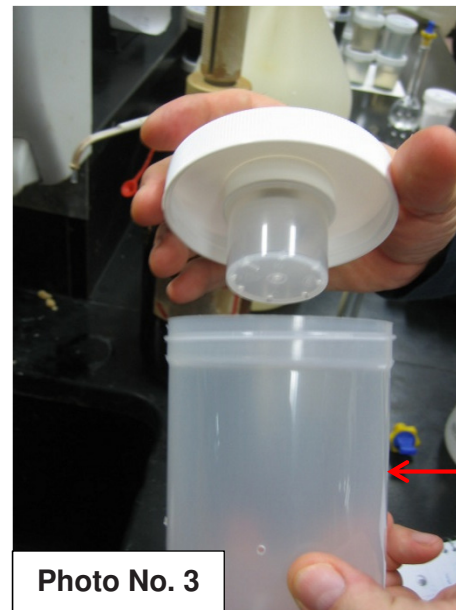
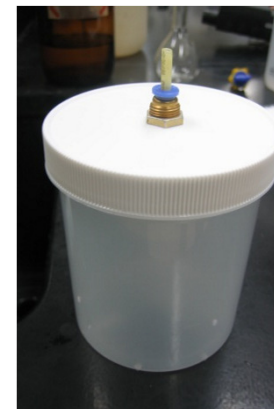


Photo No. 3

External container « B »



## THE RESULTS AND LEARNINGS

---

- Increased the work safety environment by having a reliable gas detector.
- Solve the issue with the LEL (Lower Explosive Limit) when workers wear a self contained breathing apparatus «scba» to perform work.
- Improved worker working conditions.
- Always look at the context.

# THE FIBER *of* Domtar

AGILE | CARING | INNOVATIVE



  
Domtar