

Second Quarter 2013  
Volume 1, Issue 23



PPSA  
Quarterly Report

Pulp and Paper Safety Association 770-209-7214

[www.ppsa.org](http://www.ppsa.org)

Table of Contents

Chairman's Letter

2

2012 Safety Awards

3

Legal Corner

13

Roof Access

15

2013 Mid-Year Stats

17

Electrical Testing Safety

30

2013 Awards Dinner

35

2013 Conference

Photos

37

Corporate Sponsors

38

Vendor Sponsors

39

Board of Directors

40

About our

Association

41



**The Human Element  
of Safety**

### A Letter From Our Chairman



Matt Saxe - Director of Safety  
Boise, Inc

**A**s the only association focused on safety for the forest products industry, PPSA plays a vital role in the success of our industry, and your support fuels that success. Our organization is financially strong and ready to serve the forest products industry in pursuit of creating a safe workplace.

PPSA is now in its 70<sup>th</sup> year of service. This milestone offers the perfect time to reflect on the benefits we provide our members, and to explore ways to expand those benefits. Earlier we informed you about an exciting change for PPSA, and offered a peak at the new opportunities this change will bring to our members and to PPSA as a whole.

As you know, PPSA entered into a service agreement with TAPPI to provide PPSA with association management services and administrative resources. This will not alter PPSA's membership structure or Board of Directors. TAPPI's support will be largely transparent to our members. PPSA will remain a separate entity from TAPPI. PPSA's mission remains unchanged: to bring the industry home safe, and to serve as the leaders and experts for safety in our industry.

The word that best describes our partnership with TAPPI is "synergy." TAPPI has a long history as an industry leader in meetings and events, technical publication, and industry standards, and a dedicated team of 37 professionals with backgrounds in association management, accounting, event planning, journalism, marketing, member outreach, and direct industry experience. This agreement will allow us to leverage TAPPI's experience and resources for the direct benefit of PPSA members in several ways, such as, event planning, technology sharing, and membership networking.

I'm excited to announce we have already started our efforts to enhance the association with a new logo and tagline, "Bringing the Industry Home Safe" and a new website. However that is just the beginning. We want to hear your ideas on how we can improve. Please reach out to a board member, Eric Fletty, or Elise Hitchcock. Eric and Elise's contact information can be found on the website [www.ppsa.org](http://www.ppsa.org).

Like PPSA, TAPPI is a non-profit organization sustained by the dues of its members and the contributions of its active volunteer committees; it has a Board of Directors elected annually from the membership, and values education and knowledge-sharing as vital to the success of the industry we all serve.

Together, let's expand our understanding of safety and make measurable progress toward "Bringing the Industry Home Safe" every day.

Matt Saxe  
PPSA Board Chairman

## 2012 Safety Award Winners

### Award of Excellence

Sponsored By



Paper, Pulp, Tissue, Recycle Mills. Recycle Collection Centers, and Boxboard Mills

**RockTenn, Tampa, FL (Recycle Collection)**

Converting: **International Paper, Ashland City, TN (Box Plant Without a Corrugator)**

Woodlands, Sawmills, Wood Products, Plywood and Particle Board

**Diboll Fingerjointing, Diboll, TX (Building Products)**

### Best Record

Sponsored by



Box Plant With Corrugators: **RockTenn, Guadalupe, NL**

Box Plant Without Corrugators: **International Paper, Milltown, NJ**

**Folding Carton; RockTenn, Waxahachie, TX**

Fine Paper Converting: **Domtar, Washington Courthouse, OH**

Other Paper Converting: **RockTenn, San Bernardo, Chile**

Paper Mill #1: **Evergreen Packaging, Canton, NC**

Paper Mill #2: **Graphic Packaging International, West Monroe, LA**

Paper Mill #3: **International Paper, Maysville, KY**

Pulp Mill: **Weyerhaeuser, Columbus, MS**

Recycle Collection: **RockTenn, St. Louis, MO**

100% Recycle Mill: **RockTenn, Uncasville, CT**

Sawmills: **Rayonier, Baxley, GA**

Building Products: **International Paper, Mt. Jewett, PA MDF**

Sheeting & Sheet Feeder: **Boise White Paper, Jackson, AL**

Specialty: **RockTenn, Mississauga, ON, CAN**

## 2012 Safety Award Winners

### Most Improved

Sponsored by



Box Plant Without Corrugators: **Green Bay Packaging Inc., Chickasha, OK**  
Box Plant With Corrugators: **Green Bay Packaging Inc., Cincinnati, OH**  
Fine Paper Converting: **Domtar, Addison, IL**  
Paper Mill #3: **RockTenn, Stevenson, AL**  
Pulp Mill: **Rayonier, Jesup, GA**  
Recycle Collection: **Caraustar, Charlotte, NC**  
100% Recycle Mill: **Sonoco, DePere, WI**  
Sawmills: **International Paper, Rome, GA**  
Building Products: **International Paper, Diboll, TX Particleboard**  
Sheeting & Sheet Feeder: **International Paper Bay Sheets - Gilroy, Ca Box Plant**  
Specialty: **Mohawk Fine Paper Mills, Saybrook, Ashtabula, OH**

Thank you to our  
**Platinum Sponsors**



ALWAYS LOOKING AHEAD

**71st Annual Safety  
And Health  
Conference**



**June 22 – 25, 2014**

**Vinoy Resort,  
St. Petersburg, FL**

For more information or sponsorship opportunities  
please contact Elise Hitchcock at [ehitchcock@ppsa.org](mailto:ehitchcock@ppsa.org)  
or 770-209-7214



## 2012 Safety Award Winners

**No OSHA Recordables**

| <u>COMPANY</u>           | <u>LOCATION</u>                       | <u>CATEGORY</u>       |
|--------------------------|---------------------------------------|-----------------------|
| Boise White Paper        | Jackson, AI                           | Sheeting/Sheet Feeder |
| Buckeye Lumberton        | Lumberton, NC                         | Specialty             |
| Caraustar                | Charlotte, NC                         | Recycle Collection    |
| Caraustar                | Cleveland, OH                         | Recycle Collection    |
| Caraustar                | Doraville, GA                         | Recycle Collection    |
| Domtar                   | Addison, IL                           | Fine Paper Converting |
| Domtar                   | Brownsville Converting, TN            | Fine Paper Converting |
| Domtar                   | Ridgefields Converting, Kingsport, TN | Fine Paper Converting |
| Domtar                   | Rock Hill , SC                        | Fine Paper Converting |
| Domtar                   | Tatum, SC                             | Fine Paper Converting |
| Domtar                   | Washington Court House, OH            | Fine Paper Converting |
| Green Bay Packaging Inc. | Chickasha, OK                         | Box Plant w/o corrug. |
| Green Bay Packaging Inc. | DePere, WI                            | Box Plant w/ corrug.  |
| Green Bay Packaging Inc. | Fiber Resources, Morrilton, AR        | Woodlands             |
| I Paper (TIN #115)       | Mt. Jewett, PA MDF                    | Building Products     |
| I Paper (TIN #156)       | Scotia (Glennville), NY               | Box Plant w/o corrug. |
| I Paper (TIN #01)        | Milltown, NJ                          | Box Plant w/o corrug. |
| I Paper (TIN #09)        | Streetsboro, OH                       | Box Plant w/ corrug.  |
| I Paper (TIN #10)        | Orlando , FL                          | Box Plant w/ corrug.  |
| I Paper (TIN #106)       | Diboll, TX Particleboard              | Building Products     |
| I Paper (TIN #109)       | Diboll, TX Fingerjointing             | Building Products     |
| I Paper (TIN #128)       | West Memphis, AR Gypsum               | Building Products     |
| I Paper (TIN #18)        | Minden, LA                            | Box Plant w/ corrug.  |
| I Paper (TIN #391)       | Maysville, KY                         | Papermill #3          |
| I Paper (TIN #392)       | Ontario, CA                           | 100% Recycle Mill     |
| I Paper (TIN #47)        | Littlestown, PA                       | Box Plant w/o corrug. |
| I Paper (TIN #78)        | Bay Sheets - Gilroy, CAa Box Plant    | Sheeting/Sheet Feeder |
| I Paper (TIN #81)        | Midwest Sheets (Tipton), IN           | Sheeting/Sheet Feeder |
| I Paper (TIN 016)        | Carrollton (Dallas), TX               | Box Plant w/ corrug.  |
| I Paper (TIN-043)        | Ashland City, TN                      | Box Plant w/o corrug. |
| I Paper (TIN-152)        | Conklin, NY (Binghamton)              | Box Plant w/ corrug.  |
| Longview Fibre           | Cedar City, UT                        | Box Plant w/ corrug.  |
| Longview Fibre           | Longview, WA                          | Box Plant w/ corrug.  |

## 2012 Safety Award Winners

**No OSHA Recordables**

|                               |                              |                        |
|-------------------------------|------------------------------|------------------------|
| Longview Fibre Paper & Pg     | Cedar City, UT               | Box Plant w/o corrug.  |
| Mohawk Fine Paper Mills, Inc. | Albany, NY                   | Distribution Center    |
| Mohawk Fine Papers            | Elmira, NY                   | Specialty              |
| Pratt Recycling               | Columbia, SC                 | Recycle Collection     |
| Pratt Recycling               | Fayetteville, NC             | Recycle Collection     |
| Pratt Recycling               | Memphis, TN                  | Recycle Collection     |
| Pratt Recycling               | Nashville, TN                | Recycle Collection     |
| Pratt Recycling               | Shreveport, LA               | Recycle Collection     |
| Rayonier                      | Baxley, GA                   | Sawmill                |
| Rayonier                      | Swainsboro, GA               | Sawmill                |
| RockTenn                      | Atlanta, GA (Pre-Print)      | Other Paper Converting |
| RockTenn                      | Augusta, GA                  | Recycle Collection     |
| RockTenn                      | Bakersfield, CA              | Recycle Collection     |
| RockTenn                      | Beloit, WI                   | Box Plant w/o corrug.  |
| RockTenn                      | Bolingbrook, IL              | Other Paper Converting |
| RockTenn                      | Chattanooga, TN (Trading)    | Recycle Collection     |
| RockTenn                      | Claremont, NC                | Folding Cartons        |
| RockTenn                      | Edwardsville, IL             | Other Paper Converting |
| RockTenn                      | Fresno, CA                   | Recycle Collection     |
| RockTenn                      | Ft. Smith, AR                | Box Plant w/o corrug.  |
| RockTenn                      | Gallatin, TN (Fullfillment)  | Sheeting/Sheet Feeder  |
| RockTenn                      | Guadalupe, NL                | Box Plant w/ corrug.   |
| RockTenn                      | Hartwell, GA                 | Other Paper Converting |
| RockTenn                      | Highland, IL                 | Box Plant w/o corrug.  |
| RockTenn                      | Indianapolis, IN             | Recycle Collection     |
| RockTenn                      | Jacksonville North           | Recycle Collection     |
| RockTenn                      | Jacksonville South           | Recycle Collection     |
| RockTenn                      | Jacksonville, FL             | Other Paper Converting |
| RockTenn                      | Kansas City, KS              | Recycle Collection     |
| RockTenn                      | Livingston, AL               | Folding Cartons        |
| RockTenn                      | Maryland Heights, MO         | Recycle Collection     |
| RockTenn                      | Memphis, TN                  | Recycle Collection     |
| RockTenn                      | Miami, FL                    | Recycle Collection     |
| RockTenn                      | Mississauga, ON CAN (Assbly) | Other Paper Converting |

## 2012 Safety Award Winners

## No OSHA Recordables

|          |                       |                        |
|----------|-----------------------|------------------------|
| RockTenn | Mississauga ON CAN    | Specialty              |
| RockTenn | Nashville, TN         | Recycle Collection     |
| RockTenn | Olive Branch, MS      | Box Plant w/o corrug.  |
| RockTenn | Orlando-Sanford, FL   | Recycle Collection     |
| RockTenn | Orlando-Taft, FL      | Recycle Collection     |
| RockTenn | Philadelphia, PA      | Recycle Collection     |
| RockTenn | Plymouth, IN (Knox)   | Other Paper Converting |
| RockTenn | Portland, OR (East)   | Recycle Collection     |
| RockTenn | Renton(Seattle), WA   | Recycle Collection     |
| RockTenn | Richmond, BC          | Specialty              |
| RockTenn | Rochester, MN         | Box Plant w/o corrug.  |
| RockTenn | Roseville, MN         | Box Plant w/o corrug.  |
| RockTenn | Sacramento West, CA   | Recycle Collection     |
| RockTenn | San Bernardo, Chile   | Other Paper Converting |
| RockTenn | Seattle, WA           | Recycle Collection     |
| RockTenn | Southside Chicago, IL | Recycle Collection     |
| RockTenn | Springfield, MA       | Box Plant w/o corrug.  |
| RockTenn | Springfield, MO       | Box Plant w/o corrug.  |
| RockTenn | St. Charles, LA       | Recycle Collection     |
| RockTenn | St. Louis, MO         | Recycle Collection     |
| RockTenn | Ste-Marie, QB         | Folding Cartons        |
| RockTenn | Stockton, CA          | Other Paper Converting |
| RockTenn | Tampa, FL             | Recycle Collection     |
| RockTenn | Toronto, ON           | Other Paper Converting |
| RockTenn | Tucker, GA            | Other Paper Converting |
| RockTenn | Tukwila, WA           | Other Paper Converting |
| RockTenn | Uncasville, CT        | 100% Recycle Mill      |
| RockTenn | Waxahachie, TX        | Folding Cartons        |
| RockTenn | West Chester, OH      | Other Paper Converting |
| RockTenn | Winston-Salem, NC     | Other Paper Converting |
| RockTenn | Adams, WI             | Box Plant w/ corrug.   |
| RockTenn | Baltimore, MD         | Box Plant w/ corrug.   |
| RockTenn | Blue Springs, MO      | Box Plant w/ corrug.   |
| RockTenn | Calgary, AB           | Box Plant w/ corrug.   |
| RockTenn | Fargo, ND             | Box Plant w/ corrug.   |
| RockTenn | Forth Worth, TX       | Box Plant w/ corrug.   |
| RockTenn | Galesburg, IL         | Box Plant w/ corrug.   |
| RockTenn | Glendale, AZ          | Box Plant w/ corrug.   |

## 2012 Safety Award Winners

## No OSHA Recordables

|              |                           |                      |
|--------------|---------------------------|----------------------|
| RockTenn     | Grand Prairie, TX         | Box Plant w/ corrug. |
| RockTenn     | Knoxville, TN             | Box Plant w/ corrug. |
| RockTenn     | Mansfield, MA             | Box Plant w/ corrug. |
| RockTenn     | Mexicali, MX              | Box Plant w/ corrug. |
| RockTenn     | Milton, ON                | Box Plant w/ corrug. |
| RockTenn     | Mishawaka, IN             | Box Plant w/ corrug. |
| RockTenn     | Queretaro, QR             | Box Plant w/ corrug. |
| RockTenn     | Rogers, AR                | Box Plant w/ corrug. |
| RockTenn     | Shelby, NC                | Box Plant w/ corrug. |
| RockTenn     | Sioux City, IA (North)    | Box Plant w/ corrug. |
| RockTenn     | Sioux City, IA (South)    | Box Plant w/ corrug. |
| RockTenn     | Sioux Falls, SD           | Box Plant w/ corrug. |
| RockTenn     | Tyler, TX                 | Box Plant w/ corrug. |
| RockTenn     | Wakefield, MA             | Box Plant w/ corrug. |
| RockTenn     | Washington Courthouse, OH | Box Plant w/ corrug. |
| Sonoco       | DePere, WI                | 100% Recycle Mill    |
| Weyerhaeuser | Columbus, MS              | Pulpmill             |

## No Days-Away-From-Work Cases

| COMPANY                   | LOCATION                      | CATEGORY              |
|---------------------------|-------------------------------|-----------------------|
| Boise Paper Solutions     | DeRidder, LA                  | Papermill #3          |
| Boise White Paper         | Jackson, AL                   | Papermill #3          |
| Caraustar                 | Dalton/Chattanooga, GA        | Recycle Collection    |
| Domtar                    | Dubois, PA                    | Fine Paper Converting |
| Domtar                    | Hawesville, KY                | Pulpmill              |
| Domtar                    | Indianapolis Converting, IN   | Fine Paper Converting |
| Domtar                    | Owensboro, KY                 | Fine Paper Converting |
| Graphic Pkg International | Santa Clara, CA               | 100% Recycle Mill     |
| Green Bay Packaging Inc.  | Cincinnati, OH                | Box w/ corrugator     |
| Green Bay Packaging Inc.  | El Paso, TX                   | Box w/ corrugator     |
| Green Bay Packaging Inc.  | Fort Worth, TX                | Box w/ corrugator     |
| Green Bay Packaging Inc.  | Fremont, OH                   | Box w/ corrugator     |
| Green Bay Packaging Inc.  | Green Bay, WI                 | 100% Recycle Mill     |
| Green Bay Packaging Inc.  | Green Bay Coated Products, WI | Specialty             |
| Green Bay Packaging Inc.  | Pinecrest, AR                 | Sawmill               |
| Green Bay Packaging Inc.  | Tulsa, OK                     | Box w/ corrugator     |



## 2012 Safety Award Winners

## No Days-Away-From-Work Cases

|                          |                                     |                       |
|--------------------------|-------------------------------------|-----------------------|
| Green Bay Packaging Inc. | Winchester, VA                      | Specialty             |
| Hartford City Paper      | Hartford City, , IN                 | 100% Recycle Mill     |
| I Paper (TIN #014)       | El Centro - Imperial Valley, CA     | Box w/ corrugator     |
| I Paper (TIN #104)       | Cumberland City, TN Gypsum          | Building Products     |
| I Paper (TIN #105)       | Diboll Lumber, TX                   | Sawmill               |
| I Paper (TIN #108)       | Diboll, TX Fiber Products, TX       | Building Products     |
| I Paper (TIN #110/Z36)   | Fletcher, OK Gypsum                 | Building Products     |
| I Paper (TIN #112)       | Hope , AR                           | Building Products     |
| I Paper (TIN #118)       | Monroeville, AL                     | Building Products     |
| I Paper (TIN #121)       | Pineland, TX                        | Sawmill               |
| I Paper (TIN #122)       | Rome, GA                            | Sawmill               |
| I Paper (TIN #124)       | Thomson, GA                         | Building Products     |
| I Paper (TIN #157)       | Utica, NY                           | Box Plant w/o corrug. |
| I Paper (TIN #158)       | Warren County, Manson, NC           | Box w/ corrugator     |
| I Paper (TIN #170)       | Crockett, Buena Park , CA           | Box Plant w/o corrug. |
| I Paper (TIN #171)       | Crockett, Santa Fe Springs, CA      | Box w/ corrugator     |
| I Paper (TIN #176)       | Bayline Sheet Plant, Union City, CA | Box Plant w/o corrug. |
| I Paper (TIN #19)        | Shakopee (Minneapolis), MN          | Box w/ corrugator     |
| I Paper (TIN #27)        | Crawfordsville, IN                  | Box w/ corrugator     |
| I Paper (TIN #31)        | Bell (Los Angeles), CA              | Box w/ corrugator     |
| I Paper (TIN #38)        | Garden City, NJ                     | Box w/ corrugator     |
| I Paper (TIN #385)       | Newport Cayuga. IN                  | 100% Recycle Mill     |
| I Paper (TIN #389)       | Rome, GA                            | Papermill #2          |
| I Paper (TIN #390)       | Bogalusa, LA                        | Papermill #3          |
| I Paper (TIN #393)       | Orange , TX                         | Papermill #3          |
| I Paper (TIN #42)        | Ontario, CA                         | Box w/ corrugator     |
| I Paper (TIN #444)       | Kennett Square, Toughkenamon, PA    | Box Plant w/o corrug. |
| I Paper (TIN #46)        | Elizabethton Sheet Plant, TN        | Box Plant w/o corrug. |
| I Paper (TIN #70)        | Gilroy Box Plant, CA                | Box w/ corrugator     |
| I Paper (TIN #77)        | Tampa, FL                           | Box w/ corrugator     |
| I Paper (TIN 076)        | San Antonio, TX                     | Box w/ corrugator     |
| I Paper (TIN Z33)        | S.W. Lumber (DeQuincy), LA          | Sawmill               |

## 2012 Safety Award Winners

## No Days-Away-From-Work Cases

|                               |                                |                        |
|-------------------------------|--------------------------------|------------------------|
| Longview Fibre                | Seattle, WA                    | Box w/ corrugator      |
| Longview Fibre                | Twin Falls, ID                 | Box w/ corrugator      |
| Mohawk Fine Paper Mills, Inc. | Saybrook, Ashtabula, OH        | Specialty              |
| Mohawk Fine Paper Mills, Inc. | SCC, Cohoes, NY                | Specialty              |
| Mohawk Fine Paper Mills, Inc. | Waterford Mill, Waterford , NY | Papermill #3           |
| Pratt Recycling               | Denton, TX                     | Recycle Collection     |
| Pratt Recycling               | Duncan, SC                     | Recycle Collection     |
| Pratt Recycling               | East Point, GA                 | Recycle Collection     |
| Rayonier                      | Eatonton, GA                   | Sawmill                |
| Resolute Forest Products      | Fairmont, WV                   | Pulpmill               |
| Resolute Forest Products      | Menominee, MI                  | 100% Recycle Mill      |
| RockTenn                      | Anchorage, AK                  | Recycle Collection     |
| RockTenn                      | Candiac, QB                    | Folding Cartons        |
| RockTenn                      | Columbus, IN                   | Recycle Collection     |
| RockTenn                      | Columbus, GA                   | Folding Cartons        |
| RockTenn                      | Cullman, AL                    | Box Plant w/o corrug.  |
| RockTenn                      | Des Moines, IA                 | Box Plant w/o corrug.  |
| RockTenn                      | Eaton, IN                      | 100% Recycle Mill      |
| RockTenn                      | Evansville, IN                 | Recycle Collection     |
| RockTenn                      | Frenchtown, NJ                 | Other Paper Converting |
| RockTenn                      | Fresno, CA                     | Folding Cartons        |
| RockTenn                      | Ft. Lauderdale, FL             | Recycle Collection     |
| RockTenn                      | Gallatin, TN (Sheet)           | Box Plant w/o corrug.  |
| RockTenn                      | Hebron, KY                     | Other Paper Converting |
| RockTenn                      | Hodge, LA                      | Papermill #2           |
| RockTenn                      | Huntsville, AL                 | Recycle Collection     |
| RockTenn                      | Iowa City, IA                  | Other Paper Converting |
| RockTenn                      | Joplin, MO                     | Folding Cartons        |
| RockTenn                      | Knoxville, TN                  | Recycle Collection     |
| RockTenn                      | La Tuque, QBE                  | Papermill #3           |
| RockTenn                      | Lexington, KY                  | Box Plant w/o corrug.  |
| RockTenn                      | Lithia Springs, GA             | Other Paper Converting |
| RockTenn                      | Louisville, KY                 | Recycle Collection     |
| RockTenn                      | Lynchburg, VA (Seven Hills)    | Building Products      |
| RockTenn                      | Maple Grove, MN                | Recycle Collection     |
| RockTenn                      | Marietta, GA                   | Recycle Collection     |
| RockTenn                      | Marlton, NJ                    | Other Paper Converting |

## 2012 Safety Award Winners

## No Days-Away-From-Work Cases

|           |                              |                        |
|-----------|------------------------------|------------------------|
| RockTenn  | Mississauga, ON CAN          | Other Paper Converting |
| RockTenn  | Oakland, CA                  | Recycle Collection     |
| RockTenn  | Orange, CA                   | Other Paper Converting |
| RockTenn  | Orlando, FL                  | Specialty              |
| RockTenn  | Ridgeway, VA                 | Other Paper Converting |
| RockTenn  | Sacramento East, CA          | Recycle Collection     |
| RockTenn  | Saint Charles, MO            | Other Paper Converting |
| RockTenn  | Saint Louis, MO              | Other Paper Converting |
| RockTenn  | San Jose, CA                 | Recycle Collection     |
| RockTenn  | Sheldon Springs, VT          | 100% Recycle Mill      |
| RockTenn  | Spartanburg, SC              | Box Plant w/o corrug.  |
| RockTenn  | Torrance, CA                 | Recycle Collection     |
| RockTenn  | Tucker, GA                   | Recycle Collection     |
| RockTenn  | Tulare, CA                   | Other Paper Converting |
| RockTenn  | Winston-Salem, NC (Assembly) | Other Paper Converting |
| Rock-Tenn | Aston, PA                    | Box w/ corrugator      |
| Rock-Tenn | Burlington, ON               | Box w/ corrugator      |
| Rock-Tenn | Cerritos, CA                 | Box w/ corrugator      |
| Rock-Tenn | Chesterfield, MO             | Box w/ corrugator      |
| Rock-Tenn | City of Mount Royal, QC      | Box w/ corrugator      |
| Rock-Tenn | Corona, CA                   | Box w/ corrugator      |
| Rock-Tenn | Covington, GA                | Box w/ corrugator      |
| Rock-Tenn | Dayton, NJ                   | Box w/ corrugator      |
| Rock-Tenn | Devens, MA                   | Box w/ corrugator      |
| Rock-Tenn | El Paso, TX (East)           | Box w/ corrugator      |
| Rock-Tenn | Fernandina Beach, FL         | Box w/ corrugator      |
| Rock-Tenn | Germantown, WI               | Box w/ corrugator      |
| Rock-Tenn | Guaynabo, PR                 | Box w/ corrugator      |
| Rock-Tenn | Guelph, ON                   | Box w/ corrugator      |
| Rock-Tenn | Humboldt, TN                 | Box w/ corrugator      |
| Rock-Tenn | Latta, SC                    | Box w/ corrugator      |
| Rock-Tenn | Lewisburg, TN                | Box w/ corrugator      |
| Rock-Tenn | Liberty, MO                  | Box w/ corrugator      |
| Rock-Tenn | Lithonia, GA                 | Box w/ corrugator      |
| Rock-Tenn | Milwaukee, WI                | Box w/ corrugator      |
| Rock-Tenn | Minneapolis, MN              | Box w/ corrugator      |
| Rock-Tenn | Montgomery, AL               | Box w/ corrugator      |

## 2012 Safety Award Winners

### No Days-Away-From-Work Cases

|           |                      |                   |
|-----------|----------------------|-------------------|
| Rock-Tenn | Mooreville, NC       | Box w/ corrugator |
| Rock-Tenn | Murfreesboro, TN     | Box w/ corrugator |
| Rock-Tenn | New Lenox, IL        | Box w/ corrugator |
| Rock-Tenn | Norcross, GA         | Box w/ corrugator |
| Rock-Tenn | North Tonawanda, NY  | Box w/ corrugator |
| Rock-Tenn | Panama City, FL      | Papermill #2      |
| Rock-Tenn | Richmond, VA         | Box w/ corrugator |
| Rock-Tenn | Saltillo, MS         | Box w/ corrugator |
| Rock-Tenn | Springfield, MO      | Box w/ corrugator |
| Rock-Tenn | St. Cloud, MN        | Box w/ corrugator |
| Rock-Tenn | Stevenson, AL        | Papermill #3      |
| Rock-Tenn | Ville ST Laurent, QC | Box w/ corrugator |
| Rock-Tenn | Winnipeg, MB         | Box w/ corrugator |
| Rock-Tenn | Winston-Salem, NC    | Box w/ corrugator |
| Rock-Tenn | Fresno, CA           | Box w/ corrugator |
| Sonoco    | City of Industry, CA | 100% Recycle Mill |
| Sonoco    | Menasha, WI          | 100% Recycle Mill |



**Examinetics** wants to be your hearing conservation partner!

**We are the largest provider of**

**onsite occupational health screening and data management services in the United States.**

**Let us bring one of our 70 mobile units to your location, anywhere across the 48 contiguous United States!**

**We will store your safety records on our HIPAA-compliant **XM** database for your access 24/7!**

**Call us today to find out how we can help you with your hearing conservation program!**

**[www.examinetics.com](http://www.examinetics.com) - (800) 946-7228**



## The Legal Corner



John Sunderland  
Buckeye  
PPSA Secretary/Treasure

At the PPSA 70th Safety & Health Conference in Williamsburg, Virginia, a panel of legal presenters provided updates and insights into current and forthcoming legal activities. Marc Freedman spoke from the U.S. Chamber of Commerce point-of-view. Todd Palmer, Eric Hobbs (Michael Best & Friedrich) and Larry Halprin (Keller and Heckman) provided additional OSHA perspectives. Here are a few bullet points of interest. You can view some of their presentations [online](#)!

### Key Issue Items:

- Combustible Dust
  - House Bill 849 being worked. There is no Senate Bill.
  - OSHA continues to develop a rule and enforces their standard through the NEP (National Emphasis Program) via a number of standards (Housekeeping Standard, 1910.22, Housekeeping in storage areas, 1910.176, Housekeeping violations at coal-handling operations, 1910.269, Ventilation Standard, 1910.94, Personal Protective Equipment (PPE), 1910.132, Electrical Safety, 1910.30, Powered Industrial Trucks, 1910.178, Welding, cutting, and brazing, 1910.252, Warning Signs, 1910.145, Hazard communication, 1910.1200, and Paper Mill and Saw Mill Standards 1910.261 & 1910.265.
  - NFPA is reorganizing their committees and address combustible dust in NFPA 61 – food and agriculture; NFPA 484 – metals; NFPA 654 – general; NFPA 655 – sulfur and NFPA 664 – wood processing.
- I2P2 – Implementation of mandatory health and safety programs
- MSD (Musculoskeletal Disorders) column to be added to OSHA 300 form.
- Silica Rulemaking – will lower PEL by half – expected this summer.
- Incentive programs – OSHA using directives to address as whistle-blowing protection.
- Expansion of OSHA's allowance for unions which are not affiliated with workers to be a part of visits through recent directive.
- Increased OSHA penalties and stricter SVEP (Severe Violator Enforcement Program.)

Thank you to some of our  
Corporate Sponsors



EMERGENCY RESPONSE TRAINING & EQUIPMENT SALES



Eddie Sisco  
Ralph Johnson

SAVE LIVES.  
SAVE MONEY.  
SAVE JOBS.

- Structural & Incipient Fire Brigade
- Hazardous Materials Emergency Response
- Confined Space & High Angle Rescue
- Incident Command
- Oil Spill (SPCC)
- Standby Confined Space Rescue Teams
- Equipment Sales



Industrial Firefighting Training



Hazardous Materials Training



Confined Space Rescue Training

www.erstraining.com

Emergency Response Services, Inc.

PO Box 680618 • Fort Payne, AL 35968

(256) 997-9087 • FAX: (256) 997-9041

## Roof Access

By: Carey Childers

**H**ere is a great design and idea that the Dorchester Hardwoods (formerly Weyerhaeuser) site came up with to restrict access to fixed ladders where people and contractors were getting on roofs without proper notification & training. We have opportunities to keep employees and contractors off of roofs unless we let them have access once qualifications and training is verified & purpose of going onto the roof. Also attached is a roof access permit that should be used every time anyone goes up onto any roof at your site. The guard over the ladder ensures no one gets on the roof unless the right people at the site are aware and the permits ensures everything is in place to prevent injury and falls.



**Roof Access Permit**

### Roof Access Procedures

Roof access permits, and periodic inspections are completed by an Associate authorized by the Site Sales Operations Manager.

Authorized Associates must have completed fall protection training. Notify the authorized Associate when job is complete. The authorized Associate will perform periodic inspections of safe work practices during the permit duration.

Permits are maintained by the Site Safety Manager.

Complete RADAR prior to accessing the roof. Include a review of emergency roof rescue and evacuation procedures in the plan, make sure all the necessary equipment on hand

If roof access occurs when its dark, snowing, lightning, raining, and/or if there are high winds, additional risk evaluation needs to be completed prior to issuing the permit.

After evaluating all the risks, prepare a fall protection plan that ensures employees have appropriate fall protection 100% of the time they are exposed to fall hazards of greater than 4 feet. Employees are considered exposed to fall hazards if they are within 6 feet of an unguarded edge, or an opening in the roof such as a skylight or vent. Refer to the fall protection training for additional details on fall exposures.

Ensure the plan identifies:

- The most appropriate type of fall protection system for the project Primary fall protection systems offer superior protection as compared to secondary systems and should be selected whenever possible)

- Protection when traveling on the roof to and from the work area.

- Exposure to hazardous areas including unprotected roof edges, skylights and other roof openings. Skylights that are within the work area must be covered or guarded by a fixed barrier.

- All phases of the roof work, especially when the unprotected roof edges change.

- Whether special training is necessary for employees involved in the roof access

As necessary set up controlled access zones to keep unauthorized people away.

Before starting work, conduct a pre-work meeting and discuss the fall hazards and how they will be mitigated.

All crew members must:

- Be aware of the hazards.

- Understand your fall protection plan.

- Know how to use the fall protection systems and equipment.

# PPSA Quarterly Report

## Roof Access

### Training

Associates who have a role evaluating risks or administering this permit process should complete the company online fall protection course. Contractors performing roof work shall demonstrate their work crews have completed an appropriate fall protection course.

### References

Weyerhaeuser health and Safety Resource Manual, section 5.5 Fall Protection  
 Weyerhaeuser online fall protection training  
 OSHA 1910 Subpart D, walking and working surfaces  
 OSHA 1926 Subpart M, Fall protection

|   |
|---|
| DATE:   |
| PURPOSE OF ACCESS:                                |
| AUTHORIZED BY:                                    |
| TASK COMPLETED TIME: (if prior to expired time) : |

### AUTHORIZED INDIVIDUALS (TRAINED CONTRACTORS ONLY):

|  |  |
|--|--|
|  |  |
|  |  |
|  |  |

### REQUIRED PPE:

|                |  |
|----------------|--|
| Standard PPE   | Hard hat, safety glasses w/side shields, reflective vest, safety shoes |
| Additional PPE |  |

### HAZARD IDENTIFICATION/RISK ASSESSMENT:

| Check for exposure to:    | Check if present | Protective measure |
|---------------------------|------------------|--------------------|
| Unprotected edges         |                  |                    |
| Unprotected skylights     |                  |                    |
| Fragile roof sections     |                  |                    |
| Slippery roof sections    |                  |                    |
| Overhead power lines      |                  |                    |
| Inclement weather         |                  |                    |
| Objects falling from roof |                  |                    |
| Fume stack(s)             |                  |                    |

### ROOF ACCESS PERIODIC INSPECTIONS:

| Inspections to be performed by an Associate authorized by the Site Sales Operations Manager | Pre-access | Periodic | Periodic | Periodic | Periodic | Periodic |
|---|------------|----------|----------|----------|----------|----------|
| Time  |            |          |          |          |          |          |
| PPE   |            |          |          |          |          |          |
| Fall Protection   |            |          |          |          |          |          |
| Weather /Conditions of Site   |            |          |          |          |          |          |
| Initials  |            |          |          |          |          |          |



# PPSA Quarterly Report

## 2013 PPSA Mid - Year STATS

| Folding Carton                       |                    |                  | Total OSHA Log LWDC RWDC Fatalities      |                       |                   |                   |             |
|--------------------------------------|--------------------|------------------|--|-----------------------|-------------------|-------------------|-------------|
| COMPANY                              | CITY/Location Name | Hours            | Cases (OSHA 300 log sum of col. G+H+I+J) | (OSHA 300 log col. H) | (OSHA log col. I) | (OSHA log col. G) | Total IR    |
| RockTenn                             | Waxahachie, TX     | 186,462          | 0  | 0                     | 0                 | 0                 | 0.00        |
| RockTenn                             | Claremont, NC      | 118,518          | 0  | 0                     | 0                 | 0                 | 0.00        |
| RockTenn                             | Livingston, AL     | 45,459           | 0  | 0                     | 0                 | 0                 | 0.00        |
| RockTenn                             | Warwick, Quebec    | 406,179          | 1  | 1                     | 0                 | 0                 | 0.49        |
| RockTenn                             | Conover, NC        | 314,624          | 1  | 0                     | 0                 | 0                 | 0.64        |
| RockTenn                             | Nicholasville, KY  | 268,715          | 1  | 1                     | 0                 | 0                 | 0.74        |
| RockTenn                             | Joplin, MO         | 255,205          | 1  | 0                     | 0                 | 0                 | 0.78        |
| Graphic Packaging                    | West Monroe, LA    | 491,053          | 2  | 0                     | 0                 | 0                 | 0.81        |
| RockTenn                             | Clinton, IA        | 236,902          | 1  | 0                     | 0                 | 0                 | 0.84        |
| RockTenn                             | Eutaw, AL          | 205,183          | 1  | 1                     | 0                 | 0                 | 0.97        |
| RockTenn                             | Harrison, AR       | 193,614          | 1  | 0                     | 0                 | 0                 | 1.03        |
| RockTenn                             | Knoxville, TN      | 172,745          | 1  | 0                     | 0                 | 0                 | 1.16        |
| RockTenn                             | Candiac, Quebec    | 168,741          | 1  | 1                     | 0                 | 0                 | 1.19        |
| RockTenn                             | Conway, AR         | 305,495          | 3  | 0                     | 1                 | 0                 | 1.96        |
| RockTenn                             | Hazleton, PA       | 84,142           | 1  | 0                     | 1                 | 0                 | 2.38        |
| RockTenn                             | Greenville, TX     | 148,052          | 2  | 0                     | 0                 | 0                 | 2.70        |
| RockTenn                             | Marion, NC         | 285,789          | 4  | 0                     | 0                 | 0                 | 2.80        |
| RockTenn                             | Ste-Marie, Quebec  | 135,971          | 2  | 1                     | 1                 | 0                 | 2.94        |
| RockTenn                             | Columbus, GA       | 65,045           | 1  | 0                     | 1                 | 0                 | 3.07        |
| RockTenn                             | Kimball, TN        | 188,461          | 3  | 1                     | 0                 | 0                 | 3.18        |
| RockTenn                             | Lebanon, TN        | 116,883          | 2  | 1                     | 0                 | 0                 | 3.42        |
| Green Bay Packaging                  | Depere, WI         | 34,677           | 1  | 0                     | 0                 | 0                 | 5.77        |
| RockTenn                             | Fresno, CA         | 93,394           | 3  | 0                     | 2                 | 0                 | 6.42        |
| <b>Weighted Average for Category</b> |                    |                  |  |                       |                   |                   | <b>1.46</b> |
| *= Non-Member                        |                    | <b>4,521,309</b> | <b>33</b>                                | <b>7</b>              | <b>6</b>          | <b>0</b>          |             |

| Box Plants - with corrugator |                      |         | Total OSHA Log LWDC RWDC Fatalities      |                       |                   |                   |          |
|------------------------------|----------------------|---------|--|-----------------------|-------------------|-------------------|----------|
| COMPANY                      | CITY/Location Name   | Hours   | Cases (OSHA 300 log sum of col. G+H+I+J) | (OSHA 300 log col. H) | (OSHA log col. I) | (OSHA log col. G) | Total IR |
| RockTenn                     | Queretaro, QR        | 340,831 | 0  | 0                     | 0                 | 0                 | 0.00     |
| RockTenn                     | Mexicali, MX         | 339,530 | 0  | 0                     | 0                 | 0                 | 0.00     |
| RockTenn                     | Adams, WI            | 285,577 | 0  | 0                     | 0                 | 0                 | 0.00     |
| Boise Inc                    | Santa Fe Springs, CA | 219,748 | 0  | 0                     | 0                 | 0                 | 0.00     |
| RockTenn                     | Saltillo, MS         | 171,321 | 0  | 0                     | 0                 | 0                 | 0.00     |
| RockTenn                     | Norcross, GA         | 158,792 | 0  | 0                     | 0                 | 0                 | 0.00     |
| RockTenn                     | El Paso, TX (East)   | 156,841 | 0  | 0                     | 0                 | 0                 | 0.00     |
| RockTenn                     | Humboldt, TN         | 153,020 | 0  | 0                     | 0                 | 0                 | 0.00     |
| Longview Fibre Paper & Pkg   | Yakima, WA           | 148,999 | 0  | 0                     | 0                 | 0                 | 0.00     |
| RockTenn                     | Guelph, ON           | 148,766 | 0  | 0                     | 0                 | 0                 | 0.00     |
| RockTenn                     | Toronto, ON          | 146,604 | 0  | 0                     | 0                 | 0                 | 0.00     |
| RockTenn                     | Portland, OR         | 141,857 | 0  | 0                     | 0                 | 0                 | 0.00     |

# PPSA Quarterly Report

## 2013 PPSA Mid - Year STATS

| Box Plants - with corrugator     |                       |         | Total OSHA Log LWDC RWDC Fatalities      |                       |                   |                   |          |
|----------------------------------|-----------------------|---------|--|-----------------------|-------------------|-------------------|----------|
| COMPANY                          | CITY/Location Name    | Hours   | Cases (OSHA 300 log sum of col. G+H+I+J) | (OSHA 300 log col. H) | (OSHA log col. I) | (OSHA log col. G) | Total IR |
| RockTenn                         | Winston-Salem, NC     | 137,627 | 0  | 0                     | 0                 | 0                 | 0.00     |
| RockTenn                         | Guaynabo, PR          | 137,542 | 0  | 0                     | 0                 | 0                 | 0.00     |
| RockTenn                         | Richmond, VA          | 135,992 | 0  | 0                     | 0                 | 0                 | 0.00     |
| RockTenn                         | Sioux City, IA(North) | 134,742 | 0  | 0                     | 0                 | 0                 | 0.00     |
| Boise Inc                        | Burley, ID            | 134,332 | 0  | 0                     | 0                 | 0                 | 0.00     |
| Longview Fibre Paper &           | Twin Falls, ID        | 131,346 | 0  | 0                     | 0                 | 0                 | 0.00     |
| RockTenn                         | Newark, NJ            | 129,310 | 0  | 0                     | 0                 | 0                 | 0.00     |
| RockTenn                         | North Tonawanda, NY   | 126,260 | 0  | 0                     | 0                 | 0                 | 0.00     |
| Green Bay Packaging              | Ft. Worth, TX         | 117,127 | 0  | 0                     | 0                 | 0                 | 0.00     |
| Boise Inc                        | Salem, OR             | 117,117 | 0  | 0                     | 0                 | 0                 | 0.00     |
| RockTenn                         | Mooreville, NC        | 116,703 | 0  | 0                     | 0                 | 0                 | 0.00     |
| Green Bay Packaging              | Cincinnati, OH        | 115,920 | 0  | 0                     | 0                 | 0                 | 0.00     |
| RockTenn                         | Montgomery, AL        | 115,097 | 0  | 0                     | 0                 | 0                 | 0.00     |
| RockTenn                         | Galesburg, IL         | 111,478 | 0  | 0                     | 0                 | 0                 | 0.00     |
| RockTenn                         | Murfreesboro, TN      | 110,846 | 0  | 0                     | 0                 | 0                 | 0.00     |
| RockTenn                         | Wakefield, MA         | 110,284 | 0  | 0                     | 0                 | 0                 | 0.00     |
| RockTenn                         | Fargo, ND             | 96,712  | 0  | 0                     | 0                 | 0                 | 0.00     |
| Longview Fibre Paper & Packaging | Longview, WA          | 95,258  | 0  | 0                     | 0                 | 0                 | 0.00     |
| Green Bay Packaging              | DePere, WI            | 91,401  | 0  | 0                     | 0                 | 0                 | 0.00     |
| RockTenn                         | Camillus, NY          | 86,786  | 0  | 0                     | 0                 | 0                 | 0.00     |
| RockTenn                         | Milwaukee, WI         | 74,108  | 0  | 0                     | 0                 | 0                 | 0.00     |
| RockTenn                         | Tullahoma, TN         | 66,933  | 0  | 0                     | 0                 | 0                 | 0.00     |
| RockTenn                         | Mansfield, MA         | 59,848  | 0  | 0                     | 0                 | 0                 | 0.00     |
| RockTenn                         | Ville ST Laurent, QC  | 34,018  | 0  | 0                     | 0                 | 0                 | 0.00     |
| RockTenn                         | Tyler, TX             | 11,613  | 0  | 0                     | 0                 | 0                 | 0.00     |
| RockTenn                         | Guadalupe, NL         | 354,403 | 1  | 0                     | 0                 | 0                 | 0.56     |
| RockTenn                         | Daojiao, China        | 292,237 | 1  | 0                     | 0                 | 0                 | 0.68     |
| Boise Inc                        | San Lorenzo, CA       | 229,269 | 1  | 0                     | 0                 | 0                 | 0.87     |
| RockTenn                         | Chicago, IL           | 191,264 | 1  | 0                     | 1                 | 0                 | 1.05     |
| RockTenn                         | New Lenox, IL         | 182,565 | 1  | 0                     | 1                 | 0                 | 1.10     |
| Longview Fibre Paper &           | Spanish Fork, UT      | 181,374 | 1  | 0                     | 0                 | 0                 | 1.10     |
| Boise Inc                        | Denver, CO            | 169,738 | 1  | 1                     | 0                 | 0                 | 1.18     |
| Boise Inc                        | Salt Lake City, UT    | 162,743 | 1  | 1                     | 0                 | 0                 | 1.23     |
| RockTenn                         | Cerritos, CA          | 155,502 | 1  | 0                     | 1                 | 0                 | 1.29     |
| RockTenn                         | Aston, PA             | 154,123 | 1  | 0                     | 0                 | 0                 | 1.30     |
| RockTenn                         | Minneapolis, MN       | 153,942 | 1  | 0                     | 1                 | 0                 | 1.30     |
| RockTenn                         | Chesterfield, MO      | 153,925 | 1  | 0                     | 1                 | 0                 | 1.30     |
| RockTenn                         | Forth Worth, TX       | 153,126 | 1  | 0                     | 0                 | 0                 | 1.31     |
| RockTenn                         | Germantown, WI        | 152,540 | 1  | 0                     | 1                 | 0                 | 1.31     |
| Boise Inc                        | Nampa, ID             | 145,888 | 1  | 0                     | 0                 | 0                 | 1.37     |
| RockTenn                         | Rogers, AR            | 144,530 | 1  | 0                     | 0                 | 0                 | 1.38     |
| RockTenn                         | Fernandina Beach, FL  | 144,346 | 1  | 0                     | 0                 | 0                 | 1.39     |
| RockTenn                         | Liberty, MO           | 139,880 | 1  | 0                     | 0                 | 0                 | 1.43     |

# PPSA Quarterly Report

## 2013 PPSA Mid - Year STATS

| Box Plants - with corrugator |                         |         | Total OSHA Log LWDC RWDC Fatalities      |                       |                   |                   |          |
|------------------------------|-------------------------|---------|--|-----------------------|-------------------|-------------------|----------|
| COMPANY                      | CITY/Location Name      | Hours   | Cases (OSHA 300 log sum of col. G+H+I+J) | (OSHA 300 log col. H) | (OSHA log col. I) | (OSHA log col. G) | Total IR |
|                              |                         |         |  |                       |                   |                   |          |
| RockTenn                     | Ravenna, OH             | 139,280 | 1  | 0                     | 1                 | 0                 | 1.44     |
| RockTenn                     | Springfield, MO         | 137,596 | 1  | 0                     | 1                 | 0                 | 1.45     |
| RockTenn                     | Bridgeview, IL          | 136,968 | 1  | 0                     | 0                 | 0                 | 1.46     |
| RockTenn                     | Covington, GA           | 136,875 | 1  | 0                     | 1                 | 0                 | 1.46     |
| RockTenn                     | Chattanooga, TN         | 135,717 | 1  | 0                     | 1                 | 0                 | 1.47     |
| RockTenn                     | Deer Park, NY           | 130,074 | 1  | 0                     | 1                 | 0                 | 1.54     |
| RockTenn                     | Grand Prairie, TX       | 129,452 | 1  | 0                     | 1                 | 0                 | 1.54     |
| RockTenn                     | Baltimore, MD           | 126,095 | 1  | 0                     | 1                 | 0                 | 1.59     |
| RockTenn                     | Corona, CA              | 125,493 | 1  | 0                     | 1                 | 0                 | 1.59     |
| RockTenn                     | Columbus, IN            | 120,382 | 1  | 0                     | 1                 | 0                 | 1.66     |
| RockTenn                     | St. Cloud, MN           | 119,368 | 1  | 0                     | 1                 | 0                 | 1.68     |
| RockTenn                     | Lewisburg, TN           | 118,435 | 1  | 0                     | 0                 | 0                 | 1.69     |
| RockTenn                     | Bradenton, FL           | 117,337 | 1  | 1                     | 0                 | 0                 | 1.70     |
| RockTenn                     | Winston-Salem, NC       | 346,571 | 3  | 0                     | 1                 | 0                 | 1.73     |
| Green Bay Packaging          | Tulsa, OK               | 108,958 | 1  | 0                     | 0                 | 0                 | 1.84     |
| Longview Fibre Paper & Pkg   | Oakland, CA             | 102,390 | 1  | 0                     | 0                 | 0                 | 1.95     |
| RockTenn                     | Fresno, CA              | 175,320 | 2  | 0                     | 0                 | 0                 | 2.28     |
| RockTenn                     | Cincinnati, OH          | 162,192 | 2  | 0                     | 1                 | 0                 | 2.47     |
| RockTenn                     | New Westminster, BC     | 80,557  | 1  | 0                     | 1                 | 0                 | 2.48     |
| RockTenn                     | Milton, ON              | 157,733 | 2  | 0                     | 1                 | 0                 | 2.54     |
| RockTenn                     | Lancaster, PA           | 150,915 | 2  | 1                     | 1                 | 0                 | 2.65     |
| RockTenn                     | Denver, CO              | 73,024  | 1  | 1                     | 0                 | 0                 | 2.74     |
| RockTenn                     | Latta, SC               | 145,801 | 2  | 0                     | 2                 | 0                 | 2.74     |
| Green Bay Packaging          | El Paso, TX             | 142,052 | 2  | 1                     | 1                 | 0                 | 2.82     |
| RockTenn                     | Salinas, CA             | 140,972 | 2  | 2                     | 0                 | 0                 | 2.84     |
| RockTenn                     | Devens, MA              | 139,493 | 2  | 0                     | 2                 | 0                 | 2.87     |
| RockTenn                     | Glendale, AZ            | 126,979 | 2  | 0                     | 1                 | 0                 | 3.15     |
| RockTenn                     | Mishawaka, IN           | 126,092 | 2  | 0                     | 2                 | 0                 | 3.17     |
| Green Bay Packaging          | Kalamazoo, MI           | 186,203 | 3  | 0                     | 1                 | 0                 | 3.22     |
| RockTenn                     | Dayton, NJ              | 123,472 | 2  | 0                     | 2                 | 0                 | 3.24     |
| RockTenn                     | Sioux City, IA(South)   | 118,952 | 2  | 0                     | 2                 | 0                 | 3.36     |
| Green Bay Packaging          | Fremont, OH             | 117,149 | 2  | 0                     | 0                 | 0                 | 3.41     |
| RockTenn                     | City of Mount Royal, QC | 115,473 | 2  | 0                     | 2                 | 0                 | 3.46     |
| RockTenn                     | Sioux Falls, SD         | 115,236 | 2  | 0                     | 2                 | 0                 | 3.47     |
| Green Bay Packaging          | GB Shipping Cont., WI   | 286,992 | 5  | 1                     | 1                 | 0                 | 3.48     |
| RockTenn                     | Muskogee, OK            | 57,295  | 1  | 0                     | 1                 | 0                 | 3.49     |
| Green Bay Packaging          | Baltimore, MD           | 110,877 | 2  | 0                     | 0                 | 0                 | 3.61     |
| RockTenn                     | Winnipeg, MB            | 110,291 | 2  | 0                     | 0                 | 0                 | 3.63     |
| RockTenn                     | Calgary, AB             | 107,680 | 2  | 0                     | 2                 | 0                 | 3.71     |
| RockTenn                     | North Chicago, IL       | 159,497 | 3  | 2                     | 1                 | 0                 | 3.76     |
| Green Bay Packaging          | Twin Town, MN           | 143,019 | 3  | 0                     | 0                 | 0                 | 4.20     |

# PPSA Quarterly Report

## 2013 PPSA Mid - Year STATS

| Box Plants - with corrugator  |                    |            | Total OSHA Log LWDC RWDC Fatalities      |                       |                   |                   |          |
|-------------------------------|--------------------|------------|--|-----------------------|-------------------|-------------------|----------|
| COMPANY                       | CITY/Location Name | Hours      | Cases (OSHA 300 log sum of col. G+H+I+J) | (OSHA 300 log col. H) | (OSHA log col. I) | (OSHA log col. G) | Total IR |
|                               |                    |            |  |                       |                   |                   |          |
| Green Bay Packaging           | Wausau, WI         | 174,378    | 4  | 1                     | 3                 | 0                 | 4.59     |
| Boise Inc                     | Wakulla, WA        | 162,818    | 4  | 0                     | 0                 | 0                 | 4.91     |
| Longview Fibre Paper & Pkg    | Seattle, WA        | 77,628     | 2  | 0                     | 1                 | 0                 | 5.15     |
| RockTenn                      | Milpitas, CA       | 141,779    | 7  | 2                     | 3                 | 0                 | 9.87     |
| RockTenn                      | Regina, SK         | 56,775     | 4  | 0                     | 3                 | 0                 | 14.09    |
| Weighted Average for Category |                    |            |  |                       |                   |                   | 1.5      |
| *= Non-Member                 |                    | 14,489,316 | 110                                      | 14                    | 53                | 0                 |          |

| Box Plants without a corrugator |                             |           | Total OSHA Log LWDC RWDC Fatalities      |                       |                   |                   |          |
|---------------------------------|-----------------------------|-----------|--|-----------------------|-------------------|-------------------|----------|
| COMPANY                         | CITY/Location Name          | Hours     | Cases (OSHA 300 log sum of col. G+H+I+J) | (OSHA 300 log col. H) | (OSHA log col. I) | (OSHA log col. G) | Total IR |
|                                 |                             |           |  |                       |                   |                   |          |
| RockTenn                        | Gallatin, TN (Fullfillment) | 181,374   | 0  | 0                     | 0                 | 0                 | 0.00     |
| RockTenn                        | Spartanburg, SC             | 110,779   | 0  | 0                     | 0                 | 0                 | 0.00     |
| RockTenn                        | Blue Springs, MO            | 97,421    | 0  | 0                     | 0                 | 0                 | 0.00     |
| RockTenn                        | Beloit, WI                  | 64,407    | 0  | 0                     | 0                 | 0                 | 0.00     |
| RockTenn                        | Gallatin, TN (Sheet)        | 53,524    | 0  | 0                     | 0                 | 0                 | 0.00     |
| Boise, Inc                      | Farmville, NC               | 53,220    | 0  | 0                     | 0                 | 0                 | 0.00     |
| RockTenn                        | Neenah, WI                  | 49,611    | 0  | 0                     | 0                 | 0                 | 0.00     |
| RockTenn                        | Highland, IL                | 49,432    | 0  | 0                     | 0                 | 0                 | 0.00     |
| Boise, Inc                      | Trenton, IL                 | 49,251    | 0  | 0                     | 0                 | 0                 | 0.00     |
| RockTenn                        | Lithonia, GA                | 44,003    | 0  | 0                     | 0                 | 0                 | 0.00     |
| RockTenn                        | Lexington, KY               | 43,345    | 0  | 0                     | 0                 | 0                 | 0.00     |
| RockTenn                        | Olive Branch, MS            | 40,458    | 0  | 0                     | 0                 | 0                 | 0.00     |
| Boise, Inc                      | Arlington, TX               | 39,007    | 0  | 0                     | 0                 | 0                 | 0.00     |
| RockTenn                        | Ft. Smith, AR               | 36,084    | 0  | 0                     | 0                 | 0                 | 0.00     |
| Boise, Inc                      | North Haven, CT             | 34,995    | 0  | 0                     | 0                 | 0                 | 0.00     |
| RockTenn                        | Houston, TX                 | 34,599    | 0  | 0                     | 0                 | 0                 | 0.00     |
| RockTenn                        | Des Moines, IA              | 32,681    | 0  | 0                     | 0                 | 0                 | 0.00     |
| RockTenn                        | Rochester, MN               | 31,375    | 0  | 0                     | 0                 | 0                 | 0.00     |
| Boise, Inc                      | Buffalo Grove, IL           | 29,314    | 0  | 0                     | 0                 | 0                 | 0.00     |
| Longview Fibre Paper & Pg       | Cedar City, UT              | 28,129    | 0  | 0                     | 0                 | 0                 | 0.00     |
| Boise, Inc                      | Santa Fe Springs, CA        | 26,723    | 0  | 0                     | 0                 | 0                 | 0.00     |
| RockTenn                        | Dayton, NJ                  | 21,244    | 0  | 0                     | 0                 | 0                 | 0.00     |
| Boise, Inc                      | Auburn, WA                  | 15,216    | 0  | 0                     | 0                 | 0                 | 0.00     |
| Green Bay Packaging             | Chickasha, OK               | 13,044    | 0  | 0                     | 0                 | 0                 | 0.00     |
| RockTenn                        | Springfield, MA             | 95,303    | 1  | 0                     | 1                 | 0                 | 2.10     |
| RockTenn                        | Cullman, AL                 | 235,038   | 3  | 0                     | 3                 | 0                 | 2.55     |
| Boise, Inc                      | Lithonia, GA                | 220,613   | 3  | 2                     | 0                 | 0                 | 2.72     |
| RockTenn                        | West Chester, OH            | 111,463   | 2  | 0                     | 1                 | 0                 | 3.59     |
| RockTenn                        | Springfield, MO             | 42,186    | 1  | 0                     | 1                 | 0                 | 4.74     |
| Boise, Inc                      | Algona, WA                  | 108,056   | 3  | 1                     | 2                 | 0                 | 5.55     |
| Boise, Inc                      | Kalamazoo, MI               | 68,473    | 2  | 1                     | 0                 | 0                 | 5.84     |
| Weighted Average for Category   |                             |           |  |                       |                   |                   | 1.5      |
|                                 |                             | 2,060,368 | 15                                       | 4                     | 8                 | 0                 |          |



# PPSA Quarterly Report

## 2013 PPSA Mid - Year STATS

| Sheeting & Sheet Feeder Plants       |                    |                | Total OSHA Log LWDC RWDC Fatalities      |                       |                   |                   |            |
|--------------------------------------|--------------------|----------------|--|-----------------------|-------------------|-------------------|------------|
| COMPANY                              | CITY/Location Name | Hours          | Cases (OSHA 300 log sum of col. G+H+I+J) | (OSHA 300 log col. H) | (OSHA log col. I) | (OSHA log col. G) | Total IR   |
| RockTenn                             | Milwaukee, WI      | 89,026         | 0  | 0                     | 0                 | 0                 | 0.00       |
| RockTenn                             | Athens, AL         | 71,074         | 0  | 0                     | 0                 | 0                 | 0.00       |
| RockTenn                             | Hanover Park, IL   | 69,569         | 0  | 0                     | 0                 | 0                 | 0.00       |
| RockTenn                             | Bedford Park, IL   | 67,945         | 0  | 0                     | 0                 | 0                 | 0.00       |
| Boise, Inc                           | Waco, TX           | 194,702        | 1  | 0                     | 0                 | 0                 | 1.03       |
| <b>Weighted Average for Category</b> | *= Non-Member      |                |  |                       |                   |                   | <b>0.4</b> |
|                                      |                    | <b>492,316</b> | <b>1</b>                                 | <b>0</b>              | <b>0</b>          | <b>0</b>          |            |

| Fine Paper Converting                |                             |                | Total OSHA Log LWDC RWDC Fatalities      |                       |                   |                   |             |
|--------------------------------------|-----------------------------|----------------|--|-----------------------|-------------------|-------------------|-------------|
| COMPANY                              | CITY/Location Name          | Hours          | Cases (OSHA 300 log sum of col. G+H+I+J) | (OSHA 300 log col. H) | (OSHA log col. I) | (OSHA log col. G) | Total IR    |
| Boise White Paper                    | Jackson, AL                 | 122,875        | 0  | 0                     | 0                 | 0                 | 0.00        |
| Domtar                               | Dubois, PA                  | 84,159         | 0  | 0                     | 0                 | 0                 | 0.00        |
| Domtar                               | Washington Court House, OH  | 82,154         | 0  | 0                     | 0                 | 0                 | 0.00        |
| Domtar                               | Irving, TX                  | 57,921         | 0  | 0                     | 0                 | 0                 | 0.00        |
| Domtar                               | Rock Hill, SC               | 54,011         | 0  | 0                     | 0                 | 0                 | 0.00        |
| Domtar                               | Addison, IL                 | 50,772         | 0  | 0                     | 0                 | 0                 | 0.00        |
| Domtar                               | Brownsville, TN             | 38,345         | 0  | 0                     | 0                 | 0                 | 0.00        |
| Domtar                               | Tatum, SC                   | 32,484         | 0  | 0                     | 0                 | 0                 | 0.00        |
| Domtar                               | Owensboro, KY               | 11,804         | 0  | 0                     | 0                 | 0                 | 0.00        |
| Domtar                               | Indianapolis Converting, IN | 79,453         | 1  | 1                     | 0                 | 0                 | 2.52        |
| Domtar                               | Ridgefields, TN             | 55,997         | 1  | 1                     | 0                 | 0                 | 3.57        |
| <b>Weighted Average for Category</b> |                             |                |  |                       |                   |                   | <b>0.60</b> |
|                                      |                             | <b>669,975</b> | <b>2</b>                                 | <b>2</b>              | <b>0</b>          | <b>0</b>          |             |

| Other Paper Converting |                               |         | Total OSHA Log LWDC RWDC Fatalities      |                       |                   |                   |          |
|------------------------|-------------------------------|---------|--|-----------------------|-------------------|-------------------|----------|
| COMPANY                | CITY/Location Name            | Hours   | Cases (OSHA 300 log sum of col. G+H+I+J) | (OSHA 300 log col. H) | (OSHA log col. I) | (OSHA log col. G) | Total IR |
| RockTenn               | Fernandina, FL                | 410,404 | 0  | 0                     | 0                 | 0                 | 0.00     |
| RockTenn               | Iowa City, IA                 | 92,921  | 0  | 0                     | 0                 | 0                 | 0.00     |
| RockTenn               | Portage-Du-Fort, QBE          | 72,512  | 0  | 0                     | 0                 | 0                 | 0.00     |
| RockTenn               | Dekalb, IL                    | 66,271  | 0  | 0                     | 0                 | 0                 | 0.00     |
| RockTenn               | Lima, OH                      | 62,554  | 0  | 0                     | 0                 | 0                 | 0.00     |
| RockTenn               | Winston-Salem, NC (Permanent) | 57,594  | 0  | 0                     | 0                 | 0                 | 0.00     |
| RockTenn               | Jacksonville, FL              | 54,192  | 0  | 0                     | 0                 | 0                 | 0.00     |
| RockTenn               | Marlton, NJ                   | 53,305  | 0  | 0                     | 0                 | 0                 | 0.00     |
| RockTenn               | Atlanta, GA                   | 50,961  | 0  | 0                     | 0                 | 0                 | 0.00     |
| RockTenn               | Toronto, ON                   | 47,589  | 0  | 0                     | 0                 | 0                 | 0.00     |
| RockTenn               | West Chester, OH              | 41,218  | 0  | 0                     | 0                 | 0                 | 0.00     |
| RockTenn               | Bolingbrook, IL               | 39,050  | 0  | 0                     | 0                 | 0                 | 0.00     |

# PPSA Quarterly Report

## 2013 PPSA Mid - Year STATS

| Other Paper Converting               |                                |                | Total OSHA Log LWDC RWDC Fatalities      |                       |                   |                   |             |
|--------------------------------------|--------------------------------|----------------|--|-----------------------|-------------------|-------------------|-------------|
| COMPANY                              | CITY/Location Name             | Hours          | Cases (OSHA 300 log sum of col. G+H+I+J) | (OSHA 300 log col. H) | (OSHA log col. I) | (OSHA log col. G) | Total IR    |
|                                      |                                |                |  |                       |                   |                   |             |
| RockTenn                             | Edwardsville, IL               | 37,502         | 0  | 0                     | 0                 | 0                 | 0.00        |
| RockTenn                             | Pickering, Ontario             | 33,445         | 0  | 0                     | 0                 | 0                 | 0.00        |
| RockTenn                             | Tukwila, WA                    | 30,924         | 0  | 0                     | 0                 | 0                 | 0.00        |
| RockTenn                             | Antizapan, Edo de, MX          | 29,365         | 0  | 0                     | 0                 | 0                 | 0.00        |
| RockTenn                             | Stockton, CA                   | 25,007         | 0  | 0                     | 0                 | 0                 | 0.00        |
| RockTenn                             | Mississauga, ON CAN (Assembly) | 24,708         | 0  | 0                     | 0                 | 0                 | 0.00        |
| RockTenn                             | Plymouth, IN (Knox)            | 20,659         | 0  | 0                     | 0                 | 0                 | 0.00        |
| RockTenn                             | Atlanta, GA (Pre-Print)        | 16,867         | 0  | 0                     | 0                 | 0                 | 0.00        |
| RockTenn                             | Tucker, GA                     | 6,093          | 0  | 0                     | 0                 | 0                 | 0.00        |
| RockTenn                             | Scarborough, ME                | 84,661         | 1  | 0                     | 0                 | 0                 | 2.36        |
| RockTenn                             | Hillside, IL                   | 157,923        | 2  | 1                     | 1                 | 0                 | 2.53        |
| RockTenn                             | Frenchtown, NJ                 | 78,446         | 1  | 0                     | 1                 | 0                 | 2.55        |
| RockTenn                             | Knoxville, TN                  | 77,039         | 1  | 0                     | 0                 | 0                 | 2.60        |
| RockTenn                             | San Bernardo, Chile            | 73,433         | 1  | 0                     | 0                 | 0                 | 2.72        |
| RockTenn                             | Ridgeway, VA                   | 57,512         | 1  | 0                     | 0                 | 0                 | 3.48        |
| RockTenn                             | Hartwell, GA                   | 55,846         | 1  | 0                     | 1                 | 0                 | 3.58        |
| RockTenn                             | Dallas, TX                     | 52,821         | 1  | 1                     | 0                 | 0                 | 3.79        |
| RockTenn                             | Mississauga, ON CAN            | 96,402         | 2  | 0                     | 1                 | 0                 | 4.15        |
| RockTenn                             | Winston-Salem, NC (Assembly)   | 135,423        | 3  | 2                     | 0                 | 0                 | 4.43        |
| RockTenn                             | Charleroi, PA                  | 88,122         | 2  | 1                     | 0                 | 0                 | 4.54        |
| RockTenn                             | Lithia Springs, GA             | 86,772         | 2  | 1                     | 0                 | 0                 | 4.61        |
| RockTenn                             | Mendoza, Argentina             | 41,585         | 1  | 1                     | 0                 | 0                 | 4.81        |
| RockTenn                             | Orange, CA                     | 78,660         | 2  | 1                     | 1                 | 0                 | 5.09        |
| RockTenn                             | Merced, CA                     | 73,301         | 2  | 0                     | 2                 | 0                 | 5.46        |
| RockTenn                             | Saint Charles, MO              | 117,193        | 4  | 1                     | 1                 | 0                 | 6.83        |
| RockTenn                             | Hebron, KY                     | 27,111         | 1  | 0                     | 0                 | 0                 | 7.38        |
| RockTenn                             | Saint Louis, MO                | 53,488         | 2  | 1                     | 0                 | 0                 | 7.48        |
| RockTenn                             | Plymouth, IN                   | 131,343        | 5  | 1                     | 1                 | 0                 | 7.61        |
| RockTenn                             | Tulare, CA                     | 24,997         | 1  | 0                     | 1                 | 0                 | 8.00        |
| <b>Weighted Average for Category</b> |                                |                |  |                       |                   |                   | <b>2.51</b> |
| *= Non-Member                        |                                | <b>2865219</b> | <b>36</b>                                | <b>11</b>             | <b>10</b>         | <b>0</b>          |             |

| Specialty Division  |                    |         | Total OSHA Log LWDC RWDC Fatalities      |                       |                   |                   |          |
|---------------------|--------------------|---------|--|-----------------------|-------------------|-------------------|----------|
| COMPANY             | CITY/Location Name | Hours   | Cases (OSHA 300 log sum of col. G+H+I+J) | (OSHA 300 log col. H) | (OSHA log col. I) | (OSHA log col. G) | Total IR |
|                     |                    |         |  |                       |                   |                   |          |
| Metso Paper         | Appleton, WI       | 150,693 | 0  | 0                     | 0                 | 0                 | 0.00     |
| Metso Paper         | Montreal, QC       | 106,891 | 0  | 0                     | 0                 | 0                 | 0.00     |
| Metso Paper         | Beloit, WI         | 99,310  | 0  | 0                     | 0                 | 0                 | 0.00     |
| Metso Paper         | Columbus, MS       | 94,071  | 0  | 0                     | 0                 | 0                 | 0.00     |
| Green Bay Packaging | Winchester, VA     | 88,091  | 0  | 0                     | 0                 | 0                 | 0.00     |
| Metso Paper         | Norcross, GA       | 75,953  | 0  | 0                     | 0                 | 0                 | 0.00     |
| Metso Paper         | Neenah, WI         | 60,796  | 0  | 0                     | 0                 | 0                 | 0.00     |
| Metso Paper         | Florence, AL       | 48,762  | 0  | 0                     | 0                 | 0                 | 0.00     |

# PPSA Quarterly Report

## 2013 PPSA Mid - Year STATS

| Specialty Division            |                          |           | Total OSHA Log LWDC RWDC Fatalities      |                       |                   |                   |          |
|-------------------------------|--------------------------|-----------|--|-----------------------|-------------------|-------------------|----------|
| COMPANY                       | CITY/Location Name       | Hours     | Cases (OSHA 300 log sum of col. G+H+I+J) | (OSHA 300 log col. H) | (OSHA log col. I) | (OSHA log col. G) | Total IR |
|                               |                          |           |  |                       |                   |                   |          |
| RockTenn                      | Richmond, BC             | 41,666    | 0  | 0                     | 0                 | 0                 | 0.00     |
| Metso Paper                   | Clark Summit, PA         | 34,053    | 0  | 0                     | 0                 | 0                 | 0.00     |
| Green Bay Packaging           | Slitting(Four Locations) | 33,740    | 0  | 0                     | 0                 | 0                 | 0.00     |
| Mohawk Fine Papers            | SCC, Cohoes, NY          | 32,474    | 0  | 0                     | 0                 | 0                 | 0.00     |
| Metso Paper                   | Winthrop, ME             | 30,830    | 0  | 0                     | 0                 | 0                 | 0.00     |
| Buckeye Lumberton             | Lumberton, NC            | 28,930    | 0  | 0                     | 0                 | 0                 | 0.00     |
| Metso Paper                   | Baton Rouge, LA          | 24,715    | 0  | 0                     | 0                 | 0                 | 0.00     |
| Mohawk Fine Papers            | Elmira, NY               | 7,545     | 0  | 0                     | 0                 | 0                 | 0.00     |
| Mohawk Fine Papers            | Saybrook, Ashtabula, OH  | 128,625   | 1  | 0                     | 0                 | 0                 | 1.55     |
| RockTenn                      | Orlando, FL              | 85,720    | 1  | 0                     | 0                 | 0                 | 2.33     |
| Metso Paper                   | Aiken, SC                | 75,572    | 1  | 0                     | 0                 | 0                 | 2.65     |
| RockTenn                      | Mississaugam ON CAN      | 69,166    | 1  | 0                     | 0                 | 0                 | 2.89     |
| Metso Paper                   | Biddeford, ME            | 65,068    | 1  | 1                     | 0                 | 0                 | 3.07     |
| Metso Paper                   | Thunder Bay, ON          | 43,474    | 1  | 0                     | 0                 | 0                 | 4.60     |
| Green Bay Packaging           | Green Bay, WI            | 281,834   | 8  | 0                     | 6                 | 0                 | 5.68     |
| Metso Paper                   | Federal Way, WA          | 28,343    | 2  | 1                     | 0                 | 0                 | 14.11    |
| Weighted Average for Category |                          |           |  |                       |                   |                   | 1.8      |
| *= Non-Member                 |                          | 1,736,322 | 16                                       | 2                     | 6                 | 0                 |          |

| Recycle Collection Centers |                           |        | Total OSHA Log LWDC RWDC Fatalities      |                       |                   |                   |          |
|----------------------------|---------------------------|--------|--|-----------------------|-------------------|-------------------|----------|
| COMPANY                    | CITY/Location Name        | Hours  | Cases (OSHA 300 log sum of col. G+H+I+J) | (OSHA 300 log col. H) | (OSHA log col. I) | (OSHA log col. G) | Total IR |
|                            |                           |        |  |                       |                   |                   |          |
| RockTenn                   | San Jose                  | 74,462 | 0  | 0                     | 0                 | 0                 | 0.00     |
| RockTenn                   | Renton(Seattle)           | 66,032 | 0  | 0                     | 0                 | 0                 | 0.00     |
| RockTenn                   | Maryland Heights-Waste    | 55,575 | 0  | 0                     | 0                 | 0                 | 0.00     |
| RockTenn                   | Chattanooga, TN (Trading) | 52,191 | 0  | 0                     | 0                 | 0                 | 0.00     |
| RockTenn                   | St. Louis                 | 50,515 | 0  | 0                     | 0                 | 0                 | 0.00     |
| Pratt Industries Recycling | East Point, GA            | 41,476 | 0  | 0                     | 0                 | 0                 | 0.00     |
| RockTenn                   | Jacksonville FL           | 39,897 | 0  | 0                     | 0                 | 0                 | 0.00     |
| Pratt Industries Recycling | Shreveport, LA            | 36,183 | 0  | 0                     | 0                 | 0                 | 0.00     |
| Caraustar                  | Texarkana, TX             | 34,600 | 0  | 0                     | 0                 | 0                 | 0.00     |
| Pratt Industries Recycling | Fayetteville, NC          | 32,619 | 0  | 0                     | 0                 | 0                 | 0.00     |
| RockTenn                   | St. Louis, MO(Division)   | 31,944 | 0  | 0                     | 0                 | 0                 | 0.00     |
| RockTenn                   | Marietta, GA              | 30,248 | 0  | 0                     | 0                 | 0                 | 0.00     |
| RockTenn                   | St. Charles               | 28,817 | 0  | 0                     | 0                 | 0                 | 0.00     |
| RockTenn                   | Tucker, GA                | 24,233 | 0  | 0                     | 0                 | 0                 | 0.00     |
| RockTenn                   | Maryland Heights, MO      | 23,724 | 0  | 0                     | 0                 | 0                 | 0.00     |
| Pratt Industries Recycling | Winston, NC               | 22,732 | 0  | 0                     | 0                 | 0                 | 0.00     |
| Pratt Industries Recycling | Savannah, GA              | 22,534 | 0  | 0                     | 0                 | 0                 | 0.00     |

Thank you to some of our  
Bronze Sponsors

**INDUSTRIAL  
SCIENTIFIC**  
The Gas Detection People



# PPSA Quarterly Report

## 2013 PPSA Mid - Year STATS

| Recycle Collection Centers    |                                |               | Total OSHA Log LWDC RWDC Fatalities      |                       |                   |                   |          |
|-------------------------------|--------------------------------|---------------|--|-----------------------|-------------------|-------------------|----------|
| COMPANY                       | CITY/Location Name             | Hours         | Cases (OSHA 300 log sum of col. G+H+I+J) | (OSHA 300 log col. H) | (OSHA log col. I) | (OSHA log col. G) | Total IR |
| RockTenn                      | Nashville, TN                  | 22,036        | 0  | 0                     | 0                 | 0                 | 0.00     |
| RockTenn                      | Louisville, KY                 | 21,176        | 0  | 0                     | 0                 | 0                 | 0.00     |
| Caraustar                     | Dalton, GA (incl. Chattanooga) | 21,100        | 0  | 0                     | 0                 | 0                 | 0.00     |
| Pratt Industries Recycling    | Denton, TX                     | 20,954        | 0  | 0                     | 0                 | 0                 | 0.00     |
| RockTenn                      | Seattle                        | 20,726        | 0  | 0                     | 0                 | 0                 | 0.00     |
| Caraustar                     | Doraville, GA                  | 19,800        | 0  | 0                     | 0                 | 0                 | 0.00     |
| RockTenn                      | Indianapolis, IN               | 19,712        | 0  | 0                     | 0                 | 0                 | 0.00     |
| RockTenn                      | Tampa, FL                      | 18,985        | 0  | 0                     | 0                 | 0                 | 0.00     |
| RockTenn                      | Augusta                        | 18,684        | 0  | 0                     | 0                 | 0                 | 0.00     |
| RockTenn                      | Huntsville, AL                 | 16,824        | 0  | 0                     | 0                 | 0                 | 0.00     |
| Caraustar                     | Charlotte, NC                  | 16,700        | 0  | 0                     | 0                 | 0                 | 0.00     |
| RockTenn                      | Oakland                        | 15,958        | 0  | 0                     | 0                 | 0                 | 0.00     |
| Caraustar                     | Columbus                       | 15,500        | 0  | 0                     | 0                 | 0                 | 0.00     |
| RockTenn                      | Memphis, TN                    | 13,975        | 0  | 0                     | 0                 | 0                 | 0.00     |
| RockTenn                      | Orlando Taft                   | 13,679        | 0  | 0                     | 0                 | 0                 | 0.00     |
| RockTenn                      | Maple Grove, MN                | 13,634        | 0  | 0                     | 0                 | 0                 | 0.00     |
| RockTenn                      | Atlanta, GA (Converting)       | 12,995        | 0  | 0                     | 0                 | 0                 | 0.00     |
| RockTenn                      | Bakersfield                    | 12,407        | 0  | 0                     | 0                 | 0                 | 0.00     |
| RockTenn                      | Anchorage                      | 11,573        | 0  | 0                     | 0                 | 0                 | 0.00     |
| Pratt Industries Recycling    | Nashville, TN                  | 10,137        | 0  | 0                     | 0                 | 0                 | 0.00     |
| Pratt Industries Recycling    | Columbia, SC                   | 9,637         | 0  | 0                     | 0                 | 0                 | 0.00     |
| RockTenn                      | Maryland Heights, MO (Multi)   | 8,623         | 0  | 0                     | 0                 | 0                 | 0.00     |
| Pratt Industries Recycling    | Memphis, TN                    | 6,271         | 0  | 0                     | 0                 | 0                 | 0.00     |
| RockTenn                      | Evansville                     | 4,776         | 0  | 0                     | 0                 | 0                 | 0.00     |
| RockTenn                      | Kansas City                    | 3,986         | 0  | 0                     | 0                 | 0                 | 0.00     |
| RockTenn                      | Seattle, WA (Canadian)         | 931           | 0  | 0                     | 0                 | 0                 | 0.00     |
| RockTenn                      | Torrance                       | 113,874       | 3  | 1                     | 0                 | 0                 | 5.27     |
| RockTenn                      | Knoxville, TN                  | 37,111        | 1  | 0                     | 0                 | 0                 | 5.39     |
| Pratt Industries Recycling    | Duncan, SC                     | 37,038        | 1  | 1                     | 0                 | 0                 | 5.40     |
| RockTenn                      | Columbus, OH                   | 34,000        | 1  | 0                     | 0                 | 0                 | 5.88     |
| RockTenn                      | Portland, OR (East)            | 30,707        | 1  | 1                     | 0                 | 0                 | 6.51     |
| RockTenn                      | Sacramento East                | 25,165        | 1  | 0                     | 0                 | 0                 | 7.95     |
| RockTenn                      | Ft Lauderdale                  | 23,552        | 1  | 0                     | 1                 | 0                 | 8.49     |
| RockTenn                      | Chattanooga, TN                | 38,218        | 2  | 1                     | 0                 | 0                 | 10.47    |
| RockTenn                      | Fresno, CA                     | 15,565        | 1  | 1                     | 0                 | 0                 | 12.85    |
| Caraustar                     | Hardeeville, SC                | 26,600        | 2  | 0                     | 0                 | 0                 | 15.04    |
| Caraustar                     | Cleveland, OH                  | 12,600        | 1  | 1                     | 0                 | 0                 | 15.87    |
| RockTenn                      | Southside Chicago              | 12,144        | 1  | 1                     | 0                 | 0                 | 16.47    |
| RockTenn                      | Orlando Sanford                | 11,602        | 1  | 0                     | 0                 | 0                 | 17.24    |
| Weighted Average for Category |                                | *= Non-Member |  |                       |                   |                   | 2.3      |
|                               |                                | 1,456,737     | 17                                       | 7                     | 1                 | 0                 |          |

# PPSA Quarterly Report

## 2013 PPSA Mid - Year STATS

| 100% Recycle Mills            |                                 |               | Total OSHA Log LWDC RWDC Fatalities      |                       |                   |                   |          |
|-------------------------------|---------------------------------|---------------|--|-----------------------|-------------------|-------------------|----------|
| COMPANY                       | CITY/Location Name              | Hours         | Cases (OSHA 300 log sum of col. G+H+I+J) | (OSHA 300 log col. H) | (OSHA log col. I) | (OSHA log col. G) | Total IR |
|                               |                                 |               |  |                       |                   |                   |          |
| Graphic Pkg International     | Kalamazoo, MI                   | 349,037       | 0  | 0                     | 0                 | 0                 | 0.00     |
| RockTenn                      | Syracuse, NY                    | 300,873       | 0  | 0                     | 0                 | 0                 | 0.00     |
| Graphic Pkg International     | Santa Clara, CA                 | 134,383       | 0  | 0                     | 0                 | 0                 | 0.00     |
| Sonoco                        | Menasha, WI                     | 133,854       | 0  | 0                     | 0                 | 0                 | 0.00     |
| Sonoco                        | Hutchinson, KS                  | 118,960       | 0  | 0                     | 0                 | 0                 | 0.00     |
| Sonoco                        | Newport, TN                     | 113,005       | 0  | 0                     | 0                 | 0                 | 0.00     |
| Sonoco                        | Richmond, VA                    | 106,310       | 0  | 0                     | 0                 | 0                 | 0.00     |
| RockTenn                      | Uncasville, CT                  | 96,137        | 0  | 0                     | 0                 | 0                 | 0.00     |
| RockTenn                      | Cincinnati, OH                  | 80,600        | 0  | 0                     | 0                 | 0                 | 0.00     |
| Sonoco                        | Holyoke, MA                     | 69,337        | 0  | 0                     | 0                 | 0                 | 0.00     |
| Sonoco                        | Sumner, WA                      | 60,462        | 0  | 0                     | 0                 | 0                 | 0.00     |
| Sonoco                        | City Of Industry, CA            | 54,988        | 0  | 0                     | 0                 | 0                 | 0.00     |
| Graphic Pkg International     | Pekin, IL                       | 51,367        | 0  | 0                     | 0                 | 0                 | 0.00     |
| RockTenn                      | Seminole Mill, Jacksonville, FL | 213,512       | 1  | 1                     | 0                 | 0                 | 0.94     |
| RockTenn                      | Sheldon Springs, VT             | 166,417       | 1  | 1                     | 0                 | 0                 | 1.20     |
| Graphic Pkg International     | Middletown, OH                  | 161,083       | 1  | 0                     | 0                 | 0                 | 1.24     |
| RockTenn                      | Dallas, TX                      | 137,571       | 1  | 1                     | 0                 | 0                 | 1.45     |
| Weyerhaeuser                  | Columbus Modified Fiber, MS     | 118,809       | 1  | 1                     | 0                 | 0                 | 1.68     |
| Graphic Pkg International     | Battle Creek, MI                | 223,118       | 2  | 0                     | 2                 | 0                 | 1.79     |
| Resolute Forest Products      | Menominee, MI                   | 99,397        | 1  | 0                     | 0                 | 0                 | 2.01     |
| RockTenn                      | Eaton, IN                       | 65,586        | 1  | 0                     | 1                 | 0                 | 3.05     |
| Sonoco                        | DePere, WI                      | 64,943        | 1  | 1                     | 0                 | 0                 | 3.08     |
| RockTenn                      | Battle Creek, MI                | 194,657       | 3  | 0                     | 1                 | 0                 | 3.08     |
| RockTenn                      | St. Paul Mill Complex, MN       | 436,198       | 7  | 3                     | 2                 | 0                 | 3.21     |
| Resolute Forest Products      | Fairmont, WV                    | 116,125       | 2  | 0                     | 0                 | 0                 | 3.44     |
| RockTenn                      | Aurora, IL                      | 86,499        | 2  | 0                     | 2                 | 0                 | 4.62     |
| RockTenn                      | Chattanooga, TN                 | 186,693       | 5  | 2                     | 2                 | 0                 | 5.36     |
| RockTenn                      | Delaware Water Gap, PA          | 108,205       | 3  | 2                     | 0                 | 0                 | 5.55     |
| Green Bay Packaging           | Green Bay, WI                   | 142,708       | 4  | 0                     | 1                 | 0                 | 5.61     |
| Hartford City Paper           | Hartford City, IN               | 88,288        | 3  | 1                     | 1                 | 0                 | 6.80     |
| Sonoco                        | Hartsville, SC                  | 518,790       | 20                                       | 1                     | 0                 | 0                 | 7.71     |
| Fusion Paperboard             | Versailles, CT                  | 136,585       | 8  | 0                     | 5                 | 0                 | 11.71    |
| Weighted Average for Category |                                 | *= Non-Member |  |                       |                   |                   | 2.7      |
|                               |                                 | 4,934,497     | 67                                       | 14                    | 17                | 0                 |          |



Thank you to some of our  
Bronze Sponsors



# PPSA Quarterly Report

## 2013 PPSA Mid - Year STATS

| Paper Mills #1- 2 million and over hours worked |                                 |            | Total OSHA Log LWDC RWDC Fatalities      |                       |                   |                   |          |
|---|---------------------------------|------------|--|-----------------------|-------------------|-------------------|----------|
| COMPANY   | CITY/Location Name              | Hours      | Cases (OSHA 300 log sum of col. G+H+I+J) | (OSHA 300 log col. H) | (OSHA log col. I) | (OSHA log col. G) | Total IR |
| Evergreen Packaging                             | Canton, NC                      | 1,289,307  | 3  | 1                     | 0                 | 0                 | 0.47     |
| Longview Fibre Paper& Pkg                       | Longview, WA                    | 1,143,333  | 5  | 2                     | 2                 | 0                 | 0.87     |
| Domtar  | Ashdown                         | 1,018,108  | 6  | 3                     | 0                 | 0                 | 1.18     |
| Glatfelter                                      | Ohio Operation, Chillicothe, OH | 1,430,246  | 9  | 3                     | 3                 | 0                 | 1.26     |
| Meadwestvaco                                    | Cottonton, AL                   | 1,612,925  | 16                                       | 5                     | 0                 | 0                 | 1.98     |
| Kapstone Charleston Kraft                       | North Charleston, SC            | 1,161,652  | 15                                       | 7                     | 3                 | 0                 | 2.58     |
| Meadwestvaco                                    | Covington, VA                   | 1,253,424  | 17                                       | 2                     | 7                 | 0                 | 2.71     |
| Glatfelter                                      | Spring Grove, PA                | 1,199,992  | 17                                       | 4                     | 9                 | 0                 | 2.83     |
| Weighted Average for Category                   |                                 |            |  |                       |                   |                   | 1.7      |
|   | *= Non-Member                   | 10,108,987 | 88                                       | 27                    | 24                | 0                 |          |

| Paper Mills #2- between 1 & 2 million hours worked |                    |           | Total OSHA Log LWDC RWDC Fatalities |                 |             |           |       |
|--|--------------------|-----------|-------------------------------------|-----------------|-------------|-----------|-------|
| COMPANY  | CITY/Location Name | Hours     | Cases (OSHA 300                     | (OSHA           | (OSHA       | (OSHA log | Total |
|  |                    |           | log sum of col. G+H+I+J)            | 300 log col. H) | log col. I) |           |       |
| Boise, Inc   | Int'l Falls, MN    | 840,174   | 1                                   | 0               | 1           | 0         | 0.24  |
| RockTenn   | Florence, SC       | 514,974   | 1                                   | 0               | 0           | 0         | 0.39  |
| Graphic Pkg International                          | West Monroe, LA    | 955,767   | 4                                   | 1               | 0           | 0         | 0.84  |
| Weyerhaeuser                                       | Longview, WA       | 560,819   | 3                                   | 0               | 2           | 0         | 1.07  |
| RockTenn   | Demopolis, AL      | 523,261   | 3                                   | 2               | 0           | 0         | 1.15  |
| RockTenn   | West Point, VA     | 587,659   | 5                                   | 2               | 1           | 0         | 1.70  |
| Meadwestvaco                                       | Evadale, TX        | 814,953   | 7                                   | 2               | 0           | 0         | 1.72  |
| Finch Paper LLC.                                   | Glen Falls, NY     | 795,055   | 7                                   | 4               | 0           | 0         | 1.76  |
| RockTenn   | Fernandina, FL     | 539,286   | 6                                   | 0               | 3           | 0         | 2.23  |
| Graphic Pkg International                          | Macon, GA          | 556,781   | 8                                   | 0               | 4           | 0         | 2.87  |
| RockTenn   | Panama City, FL    | 517,615   | 8                                   | 5               | 0           | 0         | 3.09  |
| RockTenn   | Hodge, LA          | 490,764   | 8                                   | 1               | 2           | 0         | 3.26  |
| Thilmany Papers                                    | Kaukauna           | 646,085   | 12                                  | 5               | 2           | 0         | 3.71  |
| Weighted Average for Category                      |                    |           |                                     |                 |             |           | 1.7   |
|  | *= Non-Member      | 8,343,193 | 73                                  | 22              | 15          | 0         |       |

Thank you to some of our  
Bronze Sponsors



www.appletonmfg.com / 800-531-2002





# PPSA Quarterly Report

## 2013 PPSA Mid - Year STATS

| Paper Mills #3-less than 1 million hours worked |                               |         | Total OSHA Log LWDC RWDC Fatalities |                 |             |           |       |
|---|-------------------------------|---------|-------------------------------------|-----------------|-------------|-----------|-------|
| COMPANY   | CITY/Location Name            | Hours   | Cases (OSHA 300                     | (OSHA           | (OSHA       | (OSHA log | Total |
|   |                               |         | log sum of col. G+H+I+J)            | 300 log col. H) | log col. I) | col. G)   |       |
| Domtar  | Marlboro, Bennettsville, SC   | 369,337 | 0                                   | 0               | 0           | 0         | 0.00  |
| Buckeye Mt. Holly                               | Mt. Holly, NC                 | 139,797 | 0                                   | 0               | 0           | 0         | 0.00  |
| RockTenn  | Jacksonville, FL              | 110,694 | 0                                   | 0               | 0           | 0         | 0.00  |
| Boise   | DeRidder, La                  | 501,690 | 1                                   | 0               | 1           | 0         | 0.40  |
| RockTenn  | La Tuque, QBE                 | 480,263 | 1                                   | 0               | 0           | 0         | 0.42  |
| Domtar  | Rothschild, WI                | 454,918 | 1                                   | 0               | 1           | 0         | 0.44  |
| New Page  | Stevens Point, WI             | 320,896 | 1                                   | 1               | 1           | 0         | 0.62  |
| Domtar  | Port Huron, MI                | 268,396 | 1                                   | 1               | 0           | 0         | 0.75  |
| Boise Inc                                       | Jackson, AL                   | 484,844 | 2                                   | 1               | 0           | 0         | 0.83  |
| RockTenn  | Coshocton, OH                 | 231,210 | 1                                   | 1               | 0           | 0         | 0.87  |
| UPM Madison (Madison Paper Industries)          | Madison, Maine                | 228,763 | 1                                   | 1               | 0           | 0         | 0.87  |
| Domtar  | Hawesville, KY                | 225,644 | 1                                   | 0               | 0           | 0         | 0.89  |
| Domtar  | Johnsonburg, PA               | 389,166 | 2                                   | 1               | 0           | 0         | 1.03  |
| Domtar  | Kingsport, TN                 | 343,385 | 2                                   | 1               | 1           | 0         | 1.16  |
| RockTenn  | Hopewell,VA                   | 321,844 | 2                                   | 0               | 2           | 0         | 1.24  |
| Domtar  | Nekoosa, WI                   | 468,237 | 3                                   | 2               | 1           | 0         | 1.28  |
| RockTenn  | Stevenson, AL                 | 459,947 | 3                                   | 0               | 2           | 0         | 1.30  |
| Weyerhaeuser                                    | Norpac, Longview, WA          | 451,714 | 3                                   | 0               | 0           | 0         | 1.33  |
| Mohawk Fine Papers                              | Waterford Mill, Waterford, NY | 136,054 | 1                                   | 0               | 0           | 0         | 1.47  |
| Packaging Corp. of America                      | Tomahawk, WI                  | 443,117 | 5                                   | 3               | 0           | 0         | 2.26  |
| Boise, Inc                                      | Wakulla, WA                   | 425,287 | 5                                   | 3               | 1           | 0         | 2.35  |
| Mohawk Fine Papers                              | Cohoes Mill, NY               | 243,356 | 3                                   | 0               | 0           | 0         | 2.47  |
| Graphic Pkg International                       | Pine Bluff, AK                | 209,403 | 3                                   | 2               | 0           | 0         | 2.87  |
| Green Bay Packaging                             | Arkansas Kraft, AR            | 398,885 | 12                                  | 0               | 0           | 0         | 6.02  |
| Interstate Paper                                | Riceboro, GA                  | 263,226 | 11                                  | 5               | 0           | 0         | 8.36  |
| Weighted Average for Category                   | *= Non-Member                 | 8370.73 | 65                                  | 22              | 10          | 0         | 1.6   |

| Pulpmills                     |                    |           | Total OSHA Log LWDC RWDC Fatalities      |                       |                   |                   |          |
|-------------------------------|--------------------|-----------|--|-----------------------|-------------------|-------------------|----------|
| COMPANY                       | CITY/Location Name | Hours     | Cases (OSHA 300 log sum of col. G+H+I+J) | (OSHA 300 log col. H) | (OSHA log col. I) | (OSHA log col. G) | Total IR |
|                               |                    |           |  |                       |                   |                   |          |
| Weyerhaeuser                  | Port Wentworth, WA | 316,441   | 0  | 0                     | 0                 | 0                 | 0.00     |
| Weyerhaeuser                  | Flint River, GA    | 269,327   | 0  | 0                     | 0                 | 0                 | 0.00     |
| Buckeye Technologies          | Memphis, TN        | 156,322   | 0  | 0                     | 0                 | 0                 | 0.00     |
| Domtar                        | Plymouth, NC       | 498,163   | 1  | 0                     | 0                 | 0                 | 0.40     |
| Weyerhaeuser                  | Columbus, MS       | 352,631   | 1  | 0                     | 0                 | 0                 | 0.57     |
| Weyerhaeuser                  | Grand Prairie, AB  | 306,808   | 1  | 0                     | 0                 | 0                 | 0.65     |
| Weyerhaeuser                  | New Bern, NC       | 297,553   | 1  | 0                     | 0                 | 0                 | 0.67     |
| Rayonier                      | Jesup, GA          | 1,085,851 | 4  | 2                     | 1                 | 0                 | 0.74     |
| Domtar                        | Kamloops, BC       | 352,045   | 2  | 1                     | 0                 | 0                 | 1.14     |
| Domtar                        | Espanola, Ontario  | 541,757   | 5  | 3                     | 1                 | 0                 | 1.85     |
| Cosmo Specialty Fibers        | Cosmopolis, WA     | 182,276   | 2  | 1                     | 1                 | 0                 | 2.19     |
| Buckeye Florida               | Perry, FL          | 696,199   | 8  | 5                     | 0                 | 0                 | 2.30     |
| Domtar                        | Hawesville, KY     | 205,963   | 4  | 3                     | 0                 | 0                 | 3.88     |
| Rayonier                      | Fernandina Beach   | 340,233   | 7  | 1                     | 1                 | 0                 | 4.11     |
| Weighted Average for Category |                    | 5601.69   | 36                                       | 16                    | 4                 | 0                 | 1.3      |



# PPSA Quarterly Report

## 2013 PPSA Mid - Year STATS

| Distribution Centers          |                    |        | Total OSHA Log LWDC RWDC Fatalities      |                       |                   |                   |          |
|-------------------------------|--------------------|--------|--|-----------------------|-------------------|-------------------|----------|
| COMPANY                       | CITY/Location Name | Hours  | Cases (OSHA 300 log sum of col. G+H+I+J) | (OSHA 300 log col. H) | (OSHA log col. I) | (OSHA log col. G) | Total IR |
| Mohawk Fine Papers, Inc.      | Albany, NY         | 25,597 | 0  | 0                     | 0                 | 0                 | 0.0      |
| Weighted Average for Category |                    |        |  |                       |                   |                   | -        |
| *= Non-Member                 |                    | 25,597 | 0  | 0                     | 0                 | 0                 |          |

| Sawmills                      |                    |         | Total OSHA Log LWDC RWDC Fatalities      |                       |                   |                   |          |
|-------------------------------|--------------------|---------|--|-----------------------|-------------------|-------------------|----------|
| COMPANY                       | CITY/Location Name | Hours   | Cases (OSHA 300 log sum of col. G+H+I+J) | (OSHA 300 log col. H) | (OSHA log col. I) | (OSHA log col. G) | Total IR |
| Meadwestvaco                  | Cottonton, AL      | 235,450 | 1  | 0                     | 0                 | 0                 | 0.85     |
| Green Bay Packaging           | Pincrest, AR       | 80,532  | 1  | 0                     | 0                 | 0                 | 2.48     |
| Weighted Average for Category |                    | 235,450 | 1  | 0                     | 0                 | 0                 |          |

| Building Products             |                             |        | Total OSHA Log LWDC RWDC Fatalities      |                       |                   |                   |          |
|-------------------------------|-----------------------------|--------|--|-----------------------|-------------------|-------------------|----------|
| COMPANY                       | CITY/Location Name          | Hours  | Cases (OSHA 300 log sum of col. G+H+I+J) | (OSHA 300 log col. H) | (OSHA log col. I) | (OSHA log col. G) | Total IR |
| RockTenn                      | Lynchburg, VA (Seven Hills) | 83,367 | 0  | 0                     | 0                 | 0                 | 0.00     |
| Weighted Average for Category |                             |        |  |                       |                   |                   | 0.0      |
| *= Non-Member                 |                             | 83,367 | 0  | 0                     | 0                 | 0                 |          |

| Woodlands                     |                     |        | Total OSHA Log LWDC RWDC Fatalities      |                       |                   |                   |          |
|-------------------------------|---------------------|--------|--|-----------------------|-------------------|-------------------|----------|
| COMPANY                       | CITY/Location Name  | Hours  | Cases (OSHA 300 log sum of col. G+H+I+J) | (OSHA 300 log col. H) | (OSHA log col. I) | (OSHA log col. G) | Total IR |
| Green Bay Packaging           | Fiber Resources, AR | 33,751 | 0  | 0                     | 0                 | 0                 | 0.00     |
| RockTenn                      | Demopolis, AL       | 31,125 | 0  | 0                     | 0                 | 0                 | 0.00     |
| RockTenn                      | Coatopa, AL         | 14,650 | 0  | 0                     | 0                 | 0                 | 0.00     |
| Weighted Average for Category |                     |        |  |                       |                   |                   | 0.0      |
| *= Non-Member                 |                     | 79,526 | 0  | 0                     | 0                 | 0                 |          |

Thank you to our  
Silver Sponsor





## Introducing the **NEW** Brady BBP®85 Sign and Label printer

Create 10" wide custom signs and labels that demand attention with Brady's new BBP®85 Sign and Label Printer. With multicolor print capabilities and a wide range of material options, your visuals won't be missed.

- Materials for both indoor and outdoor applications
- Easy walk up and print user interface
- Label design apps for pipe markers, safety signs and more!

For more information, visit [www.BradyID.com/BBP85](http://www.BradyID.com/BBP85)



Scan the QR code for more information about Brady's BBP®85 printer!



**BRADY**  
WHEN PERFORMANCE MATTERS MOST™



# Electrical testing safety

## Part 1: Preparing for absence of voltage testing

### Application Note

Jim White, Training Director, Shermco Industries, Inc.

OSHA and the NFPA 70E Standard for Electrical Safety in the Workplace both direct workers to **deenergize all live parts to which an employee may be exposed**, unless live conditions are required for troubleshooting.

Placing electrical equipment or systems in an electrically-safe work condition might seem simple, but there are several factors to consider.

- Proper planning and preparation will make any type of testing simpler and safer.
- Having to stop work to fetch other tools or testers interrupts focus and can contribute to an accident.

Before you take a single measurement, first determine:

- Will you be troubleshooting or testing for the absence of voltage?
- What tools will you use to verify the energized or de-energized state?
- What Personal Protective Equipment (PPE) will be required?
  - What is the voltage of the circuit?
  - What is the Flash Protection Boundary?
  - How much incident energy is possible at your working distance?
- Is your lockout/tagout complete?
- Is your test tool functioning properly?

If you're testing for the **absence** of voltage, that is, to verify there is no voltage present before beginning work, you might consider using a non-contact proximity tester (Figure 1), an electrical tester (Figure 2), or a multimeter (Figure 3).

### Tools to use

#### A) Low-voltage proximity or non-contact voltage testers

These little tools are good for a first test, but should always be followed up with a direct-contact meter. At Shermco Industries, we issue each of our technicians a proximity tester like the one shown in Figure 1 to keep in their top pocket or somewhere it can be easily seen, if it lights up in the presence of voltage.

Keep in mind that proximity tester readings can be thrown off if:

- the insulated test point touches grounded metal.
- the cable being tested is partially buried.
- the user is isolated from ground.
- it is used inside a metal enclosure.

Proximity testers also won't detect shielded cable. To better understand why proximity testers have these limitations, read the Fluke application note on the subject, "Understanding capacitive voltage sensors." The key word is "proximity." Proximity varies not just by distance, but also by the strength of the voltage field. And "distance" has to account for everything between the tester and the electrical source, including the air, insulation, breaker material, twist locks, and so forth.

The real issue is that proximity testers may indicate voltage, or they may not, depending on specific circumstances. For absence of voltage testing, a different, completely reliable test method is required.

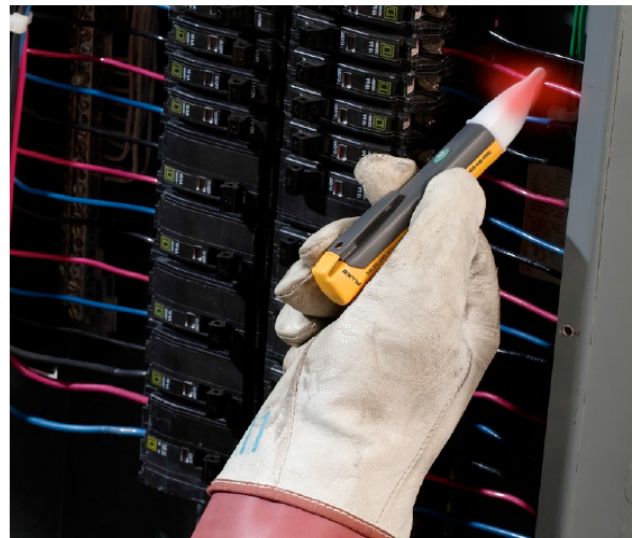


Figure 1. Use a non-contact voltage tester for your first test.





Figure 2. For your second test, pick a digital, not solenoid, electrical tester.

#### B) Electrical testers (previously solenoid)

Back in the day, solenoid testers were the weapon of choice, mostly because everything else was so expensive. There are a couple of big issues with these.

- If the voltage drops below about 70 to 90 volts, depending on the specific tester used, the tool doesn't indicate voltage is present. I've been nailed more than once because of this. Once I was testing a motor controller that had a blown fuse. That phase was being back-fed through a control power transformer (CPT) and should have shown voltage. Due to the impedance of the CPT and the tester, I received no indication. I screamed like a chicken when I made contact.
- Even solenoid units with indicator lights stop lighting up at about 30 volts or so. This won't send a person into fibrillation, but it could cause them to back into something that could.
- Solenoid testers wear out and the voltage scale becomes scarred up. If you can't read the voltage indicator and the solenoid is so weak that it barely vibrates, it's not reliable to use.
- Solenoid testers aren't fused and don't comply with CAT safety rating requirements. If a transient hits the system while you're connected, there's nothing to protect you from serious injury.

Fluke strongly recommends using the newer generation of fused, electronic testers. They still vibrate and light up, but they're much more accurate, they measure to 10 volts and they're fused for transient protection.

#### C) Digital multimeter

Multimeters are the best standard tool for making accurate contact measurements to determine if a circuit is live. However: Turning the multimeter dial to the wrong function (amps instead of volts, for example) is one of the most common mistakes people make when using a multimeter. Older models that are not auto-ranging could be put into a range that is too high, making the voltage appear much smaller than it really is. Someone in a hurry, stressed or not careful could get in trouble. Using newer meters resolves the issue, as well as bringing new features in.

The Fluke model 117 for example, has a low impedance function for voltage testing that can be a great safety feature. The Fluke 117 also has a built-in non-contact voltage test function, for people who want to start with a proximity test and then move to a contact test, with the same instrument.

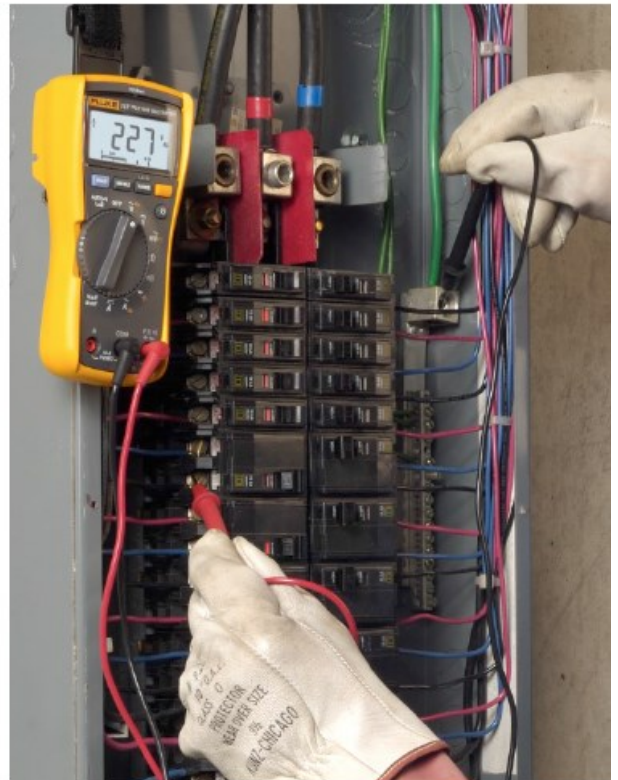


Figure 3. A DMM with a low-impedance option is the smartest pick for a live-dead-live test.

Any direct-contact meter can be dangerous if connected to a circuit higher than it is rated for. In my travels around the country, several facilities have had fatalities due to an electrical worker troubleshooting a 2.3 kV or 4.16 kV motor starter control circuit. The CPT is often mounted on the side of the drawout unit and the terminals cannot be seen clearly. The technician is trying to test the 480 V circuit and comes into contact with the medium-voltage circuit instead. Bad things happen when this occurs.

OSHA states that **test equipment, and their accessories, shall be rated for the circuits they'll be connected to.** The NFPA 70E contains similar statements.

### Personal Protective Equipment

Does it sound strange to require PPE for a non-energized test? Until an electrical circuit or parts are tested and found absent of voltage, they must be presumed to be energized. Wear the appropriate PPE for the environment until it is proven de-energized.

Before working for Shermco, I was the Electrical Field Services Manager and Compliance Manager for SUNOHIO. Early one morning, I took a crew out to test a power transformer that was having problems at an industrial customer's facility. Upon arrival, I asked for a one-line to write the LOTO procedure. The drawing I was given was so old it was yellowed. I was assured by both the plant manager and the electrical supervisor that the one-line was fine and no changes had ever been made to the 4.16 kV system.

My crew proceeded to lock and tag the system and, since it was a double-ended substation, it was fairly easy to isolate the problem transformer. The terminal chamber cover was removed and,

being completely certain the circuit was de-energized, I was about to untape the connections in preparation for testing. At the last moment, I decided to follow good safety practice and test the circuit, even though I knew "it was dead". The voltage detector lit up and I almost fainted. Another lesson learned. An alternate circuit had been installed at some time in the past and no one working there was aware (or remembered) it. Take my word for it, it's not dead until it is proven dead. Don't make my mistake. There was nothing funny about this incident.

The Fluke Safety Program offers a free poster <http://shop.csepromo.com/Fluke/> describing both the test tool rating categories and the PPE categories. It helps clarify what to use and wear in particular electrical environments.

### Lockout/Tagout

Electrical workers are required by OSHA to place equipment in an electrically-safe work condition (although they don't use those words) in 1910.333(b) and the NFPA 70E in Article 120, which involves Lockout, Tagout, test operating, testing at the point of contact, and grounding, if necessary. Grounding may or may not be practical on low-voltage systems, but should be done whenever possible.

Capacitors, UPS systems and long cable runs can maintain a stored charge. The application of safety grounds eliminates this hazard by discharging the stored energy. There may also be induced voltages if the conductors are from a long cable tray containing other, unshielded conductors that are still energized. Grounding of low-voltage systems is not always simple and at times may not be possible. Be certain to have a positive connection on the grounds—otherwise they could blow off under short circuit conditions.

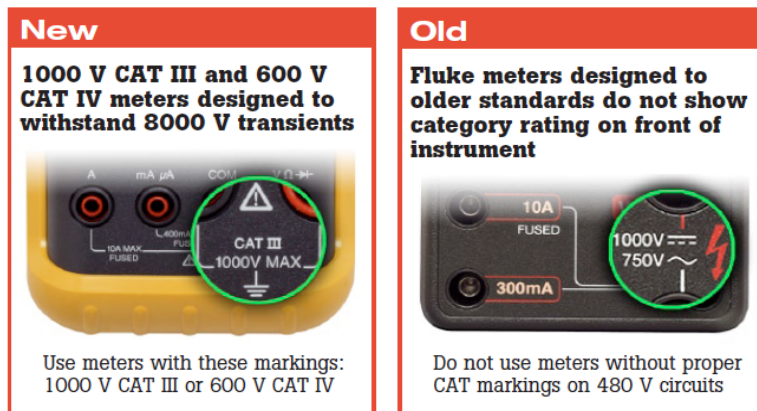


Figure 4.

Thank you to some of our  
Corporate Sponsors







**TAPPI/PPSA**  
**Safety Management Leadership Course**  
**BE THE CHANGE FOR A SAFER WORKPLACE.**  
**August 26-27, 2013 • TAPPI Headquarters, Metro Atlanta, GA, USA**

**TAPPI** 

**FLUKE®**

### Verifying the operation of the voltage tester

Before beginning the absence of voltage test, check the test instrument to ensure it is working properly.

1. Wearing proper PPE, measure a voltage similar to the voltage of the equipment about to be tested. This would include whether it is ac or dc and approximately the same magnitude.
2. Now test the circuit that is supposed to be de-energized.
3. Once testing is complete, re-verify the meter is still functioning properly by going to the same known voltage source and making another measurement.

This is known as "live-dead-live" testing and is mandated by OSHA when voltages are above 600 volts. It is also required by the NFPA 70E in Article 110.9(A)(4), "Operation Verification. When test instruments are used for the testing for the absence of voltage on conductors or circuit parts operating at 50 volts or more, the operation of the test instrument shall be verified before and after an absence of voltage test is performed."

This live-dead-live requirement is new to the 70E, for the 2009 edition. Test instruments lead a tough life and when your life depends on them, live-dead-live is the only way to go, for voltages of any level.

**Fluke.** *Keeping your world up and running.®*

**Fluke Corporation**  
 PO Box 9090, Everett, WA 98206 U.S.A.

**Fluke Europe B.V.**  
 PO Box 1186, 5602 BD  
 Eindhoven, The Netherlands

**For more information call:**  
 In the U.S.A. (800) 443-5853 or  
 Fax (425) 446-5116  
 In Europe/M-East/Africa +31 (0) 40 2675 200 or  
 Fax +31 (0) 40 2675 222  
 In Canada (800)-36-FLUKE or  
 Fax (905) 890-6866  
 From other countries +1 (425) 446-5500 or  
 Fax +1 (425) 446-5116  
 Web access: <http://www.fluke.com>

©2008-2009 Fluke Corporation.  
 Specifications subject to change without notice.  
 Printed in U.S.A. 6/2009 3392477B A-EN-N

Modification of this document is not permitted  
 without written permission from Fluke Corporation.

Jim White is the Training Director for Shermco Industries, <http://www.shermco.com/> in Irving, Texas and a level IV NETA technician. Jim represents NETA on NFPA 70E and B committees, as well as the Arc Flash Hazard Work Group, and is Chairman of the 2008 IEEE Electrical Safety Workshop.



**The George Kress Foundation Inc.**

Thank you to some of our  
**Corporate Sponsors**

**BOISE®**

**MOHAWK FINE PAPERS**



**BUCKEYE**

## Safety and Energy Savings Solutions at your dock and door openings



**Safe-T-Lip Dock Levelers**  
Helps prevent costly falls from vacant loading docks.



**Vehicle Restraints**  
The most effective way to prevent accidents caused by trailer separation and vertical or horizontal movement.



**Revolution Fans**  
An industrial ceiling fan that helps drive down energy costs while improving employee comfort.



**Frommelt® Seals and Shelters**  
with RainGuard Header Seal



**Barrier Systems**  
Discover new cost-effective solutions to help keep your people safe and reduce equipment and product damage.



**Industrial FasTrax Doors**  
The safest, most efficient and most reliable high speed doors in the industry.

Contact Tim Kubly, Strategic Account VP,  
Pulp, Paper, and Packaging  
tkubly@ritehite.com Mobile: 262-365-3507

RITE-HITE  
8900 N Arbon Drive \* Milwaukee, WI 53223 \* 800-456-0600 \* [www.ritehite.com](http://www.ritehite.com)



### PPSA Awards Dinner and Recipients

The 2013 PPSA Annual Safety and Health Conference was another great success. We saw more than 150 attendees participate in our 4 day conference presentations, exhibits and activities. From the vendors to the speakers, everyone was able to connect with their peers, colleagues and customers on a personal level.

Attendees were able to hear from more than 15 unique speakers who all brought a new and fresh perspective to safety. Some of the topics attendees heard about were, "Coping with Human Error Through Human Performance Improvement," "To Improve Safety Performance—First Improve Work Relationships," and *"The World of OSHA from a Beltway-insider's Perspective."*

As is tradition with PPSA, the Awards Banquet was held again this year. PPSA would like to again congratulate all the companies who received awards this year. PPSA would also like to again congratulate the 2012 Executive Eagle Award Winner Robert E. Schroeder with Green Bay Packaging and the 2012 PPSA Distinguished Service Award John Sunderland with Buckeye Technologies

Below are some photos from the conference. If you were not able to join us this year, we hope to see you next year on June 22 - 25th at the Vinoy Hotel in St. Pete, Florida.



Robert E. Schroeder of Green Bay Packaging receiving the 2012 Executive Eagle Award from Mike Hagenbarth - RockTenn



Mike Hagenbarth of RockTenn receiving the Award of Excellence from Ed Corlew of Mohawk Paper



John Sunderland of Buckeye Technologies receiving the 2012 Distinguished Service Award from Ed Corlew of Mohawk Paper





# CHEMICALS CAN'T COME CLOSE

## CARBON X

9.0  
3.0 (spaced TPP of 6.0)

18  
15

There are protective fabrics that resist heat. There are protective fabrics that resist chemicals. Now there is a protective solution designed specifically for the Pulp and Paper industry that does both.

CarbonX® CR-Repel™ delivers ultimate protection against hot chemicals and high-heat processes commonly used in processing pulp and paper. It is made of the patented CarbonX blend of high-performance fibers—proven to provide extraordinary protection against extreme heat and direct flame—and a proprietary compound that enables the fabric to remarkably defend against chemical exposure.

CR-Repel is truly non-flammable and will not burn, melt, or ignite, even after intense heat or flash fire exposure. It far exceeds the industry's standard levels of protection, yet is lightweight, soft-to-the-touch, and comfortable. **CarbonX is the only choice when safety matters most.**

Visit the CarbonX table (#19) at the PPSA Safety and Health Conference.

CarbonX CR-80 Repel  
NFPA 2112

TPP  
(cal/cm<sup>2</sup>)

CarbonX CR-80 Repel  
ASTM F739-12

CHEMICAL  
EXPOSURE  
SULFURIC  
ACID  
(minutes to  
breakthrough)

(801) 415-0025

To watch how CarbonX performs, visit [www.carbonx.com/videogallery](http://www.carbonx.com/videogallery)









Corporate Sponsors



The George Kress Foundation Inc.



MOHAWK FINE PAPERS



Platinum Sponsors



Silver Sponsors



Bronze Sponsors



## PPSA Quarterly Report

### PPSA Board of Directors

**General Chairman****Matt Saxe**

Boise Inc.  
1111 W. Jefferson Street  
Boise, ID 83702  
208-384-7148  
MattSaxe@BoiseInc.com

**1<sup>st</sup> Vice Chairman****Matthew Kanneberg**

RockTenn  
504 Thrasher Street  
Norcross, GA 30071  
678-291-7925  
mkanneberg@rocktenn.com

**2<sup>nd</sup> Vice Chairman****Ed Corlew**

Mohawk Fine Papers, Inc.  
465 Saratoga Street  
Cohoes, NY 12047  
518-233-6279  
Corlewe@mohawkpaper.com

**Secretary/Treasurer****John Sunderland**

Buckeye Technologies  
One Buckeye Drive  
Perry, FL 32348  
850-584-1569  
John\_sunderland@bkitech.com

**Ex-Officio****Chris Redfearn**

Weyerhaeuser  
P.O. Box 9777  
Federal Way, WA 98063-9777  
253-924-5887  
chris.redfearn@weyerhaeuser.com

**Chairman Emeritus****Peter Masias**

Green Bay Packaging, Inc.  
P.O. Box 19017  
Green Bay, WI 54307  
920-433-5133  
pmasias@gbp.com

**Shawn Powell**

Brady National Accounts  
1813 Beekman Street  
843-259-0975  
shawn\_powell@bradycorp.com

**Monty Batchelor**

Domtar Paper Company  
P.O. Box 678  
Bennettsville, SC 29512  
843-479-0200  
monty.batchelor@domtar.com

**John DeVeau**

RockTenn  
125 Depot Rd  
Uncasville, CT  
860-639-2307  
jdeveau@rocktenn.com

**Tim Kubly**

Rite-Hite Corporation  
8900 North Arbon Drive  
Milwaukee, WI 53233  
414-362-3706  
tkubly@ritehite.com

**John Williams**

International Paper  
6400 Poplar Avenue  
Memphis, TN 38197-0001  
901-419-4424  
john.williams1@ipaper.com

**Sue Cooper**

Weyerhaeuser  
P.O. Box 9777  
Federal Way, WA 98063-9777  
253-924-2139  
sue.cooper@weyerhaeuser.com

**Allan Bohn**

Domtar Paper Company  
P.O. Box 747  
Plymouth, NC 29762  
252-793-8815  
allan.bohn@domtar.com

### PPSA Staff

**Eric Fletty**

Executive Director  
15 Technology Parkway South  
Peachtree Corners, GA 30092  
770-209-7535  
efletty@ppas.org

**Elise Hitchcock**

Member Relations  
15 Technology Parkway South  
Peachtree Corners, GA 30092  
770-209-7214  
ehitchcock@ppas.org

### About our Organization

**A** non-profit, non-political, international organization, devoted to safety throughout the paper industry. From forest products to paper mills, to converting plants, to recycle collections centers, our membership is grouped by category to ensure a fair and appropriate basis for comparison.

The association began in the 1940's as the Southern Pulp and Paper Safety Association, later changing the name to reflect our widening membership base. We currently have members throughout The United States, Canada and other countries. We work to promote safety, to set reasonable and attainable goals, to educate our members, and to give the members a forum for discussion.

Membership in the Association is by operating facility, such as a paper mill, box plant, sawmill, woodlands, etc. Approximately 380 operating facilities are currently members. Annual Membership is based on employee numbers. We also welcome supplier members as well.

Membership in the Association has many advantages:

- Participation in the Annual Health and Safety Conference and service as a member of the Board of Directors provides an opportunity for personal and professional growth.
- Participation in our webinars and training seminars.
- The Pulp and Paper Safety Association is the ONLY national organization exclusively concerned with accident prevention in the forest product industry.
- The annual Conference provides great face-to-face networking opportunities.
- The Quarterly Report provides a way of bench-marking your own performance with others in similar operations.
- The Awards program provides a prestigious form of recognition to outstanding short-term and long-term safety performance by operating categories.
- The Association is an excellent forum for keeping up with latest OSHA standards. In-depth information on specific subjects is increasingly available at regional seminars. The cost of these seminars is minimized by virtue of holding them on a regional basis.
- The annual conference provides a fine external motivational boost to hourly Safety Committee members as recognition for their active participation in your safety program.
- The cost of membership is the lowest of any association to our knowledge.
- The attendance of vendors at our annual conference allows safety people to keep up with the latest safety equipment, tools and training.

Visit our website at [www.ppsa.org](http://www.ppsa.org) for more information

Pulp and Paper Safety Association  
15 Technology Parkway South  
Peachtree Corners, GA 30092  
770-209-7214  
[www.ppsa.org](http://www.ppsa.org)